

0017-5 - 69/55 33

23/69

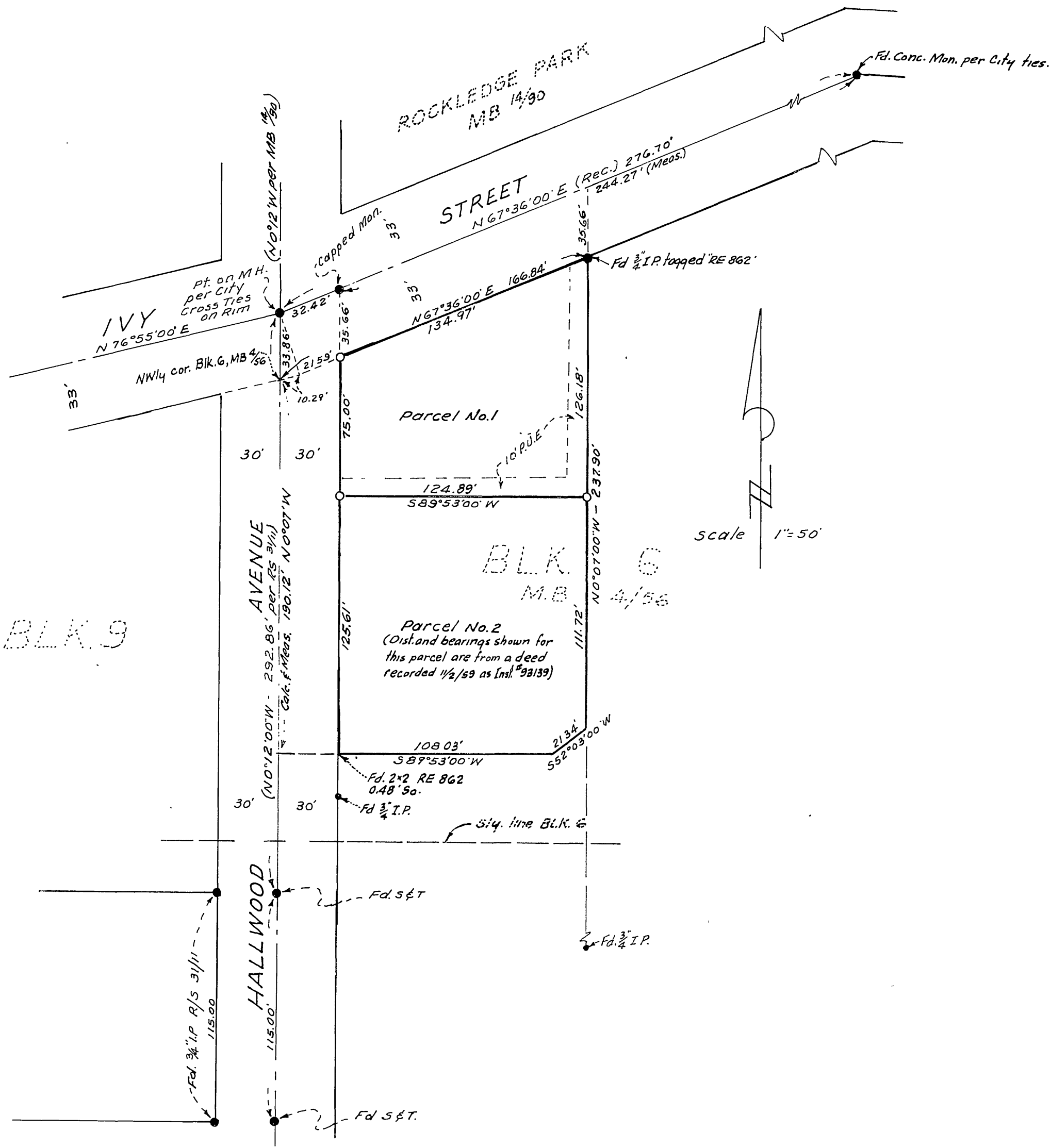
IN THE CITY OF RIVERSIDE RECORD OF SURVEY

OF A PORTION OF BLOCK 6 OF ROCKLEDGE AS SHOWN ON A MAP
FILED IN BOOK 4, PAGE 56 OF MAPS, RECORDS OF RIVERSIDE COUNTY
CALIFORNIA. IN SECTION 35, T2S, R5W, S.B.B. & M.
September, 1960

McKEE & CRAWLEY
Surveyors - Engineers

SCALE: 1" = 50'

Filed for record at request of County Surveyor this 15th day of March
19 61 at 3:40 P.M. in Book 33 of Record of Survey at Page 69
Fee \$ 5.00
By Jack A. Ross County Recorder
By O. A. Sheat Deputy



ENGINEERS NOTES:
The basis of bearings shown on this map is the center line of HALLWOOD AVE., N 0° 12' W as shown on Record of Survey filed in Book 31, Page 11, Records of Riverside County, California.
● Indicates monuments found as noted.
○ Indicates 2x2 R.W.S., Tagged L.S. 1825 Set.

This map correctly represents a survey made by me or under my direction in conformance with the requirements of Chapter 15 of Division 3 of the business and professions code at the request of NORRIS W. COCHRAN in September 1960
By Donald A. McKee (Signed and Sealed)
No L.S. 1825

This map has been examined for conformance with the requirements of Chapter 15 of Division 3 of the Business and Professions Code this 15th day of March 1961

A.C. KEITH
County Surveyor
By C. T. Wouley
Deputy

es 33/69 S-160