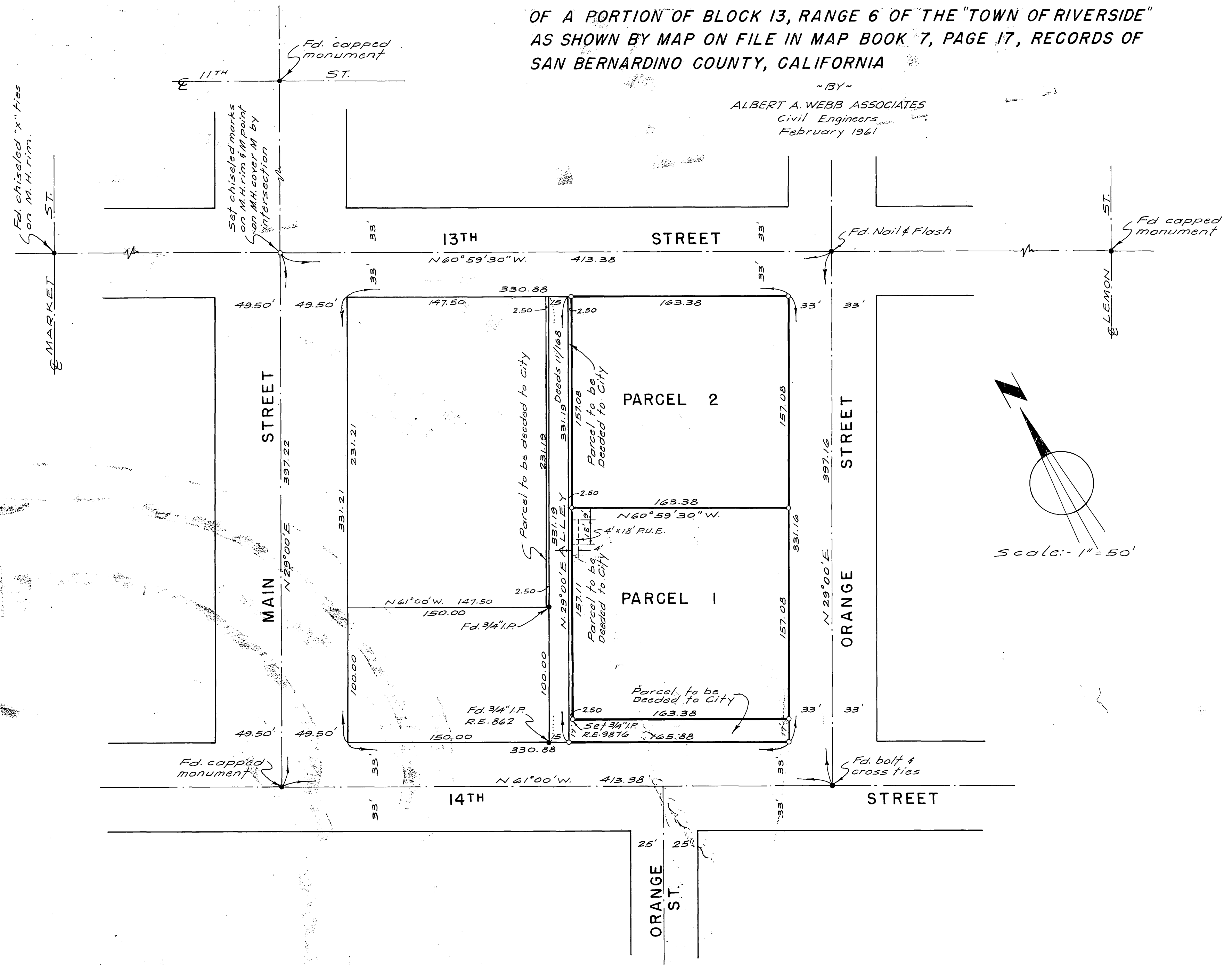


IN THE CITY OF RIVERSIDE RECORD OF SURVEY

OF A PORTION OF BLOCK 13, RANGE 6 OF THE "TOWN OF RIVERSIDE"
AS SHOWN BY MAP ON FILE IN MAP BOOK 7, PAGE 17, RECORDS OF
SAN BERNARDINO COUNTY, CALIFORNIA

~BY~
ALBERT A. WEBB ASSOCIATES
Civil Engineers
February 1961

Filed for Record at request of County Surveyor this 23rd day of
March, 1961 at 3:25 P.M. in Book 83
of Record of Survey at Page 73
Fee 45.00 No. _____
JACK A. ROSS County Recorder
By O. A. Wheat Deputy



ENGINEER'S CERTIFICATE
This map correctly represents a survey made by me or under my direction in conformance with the requirements of Chapter 15 of Division 3 of the Business and Profession Code at the request of FIRST AMERICAN TITLE INSURANCE & TRUST COMPANY
Ernest N. Webb
Registered Civil Engineer No 9876

- ENGINEER'S NOTE:**
1. Basis of Bearings is the centerline of 14th St. assumed as N.61°-00'W.
 2. Found monuments as noted at all points shown thus •
 3. Set P.K. nail & tagged R.E. 9876 at all points shown thus o unless otherwise noted.

COUNTY SURVEYOR'S CERTIFICATE
This map has been examined for conformance with the requirements of Chapter 15 of Division 3 of the Business and Profession Code this 23rd day of March 1960
A.C. KEITH County Surveyor
By E. T. Worsley Deputy