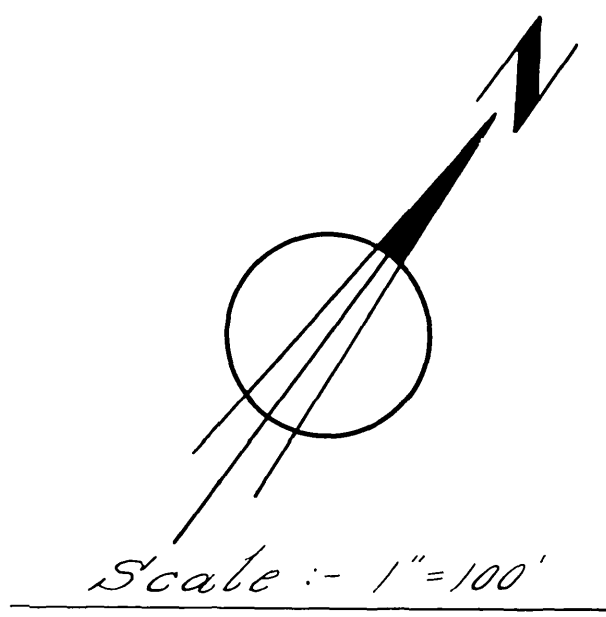
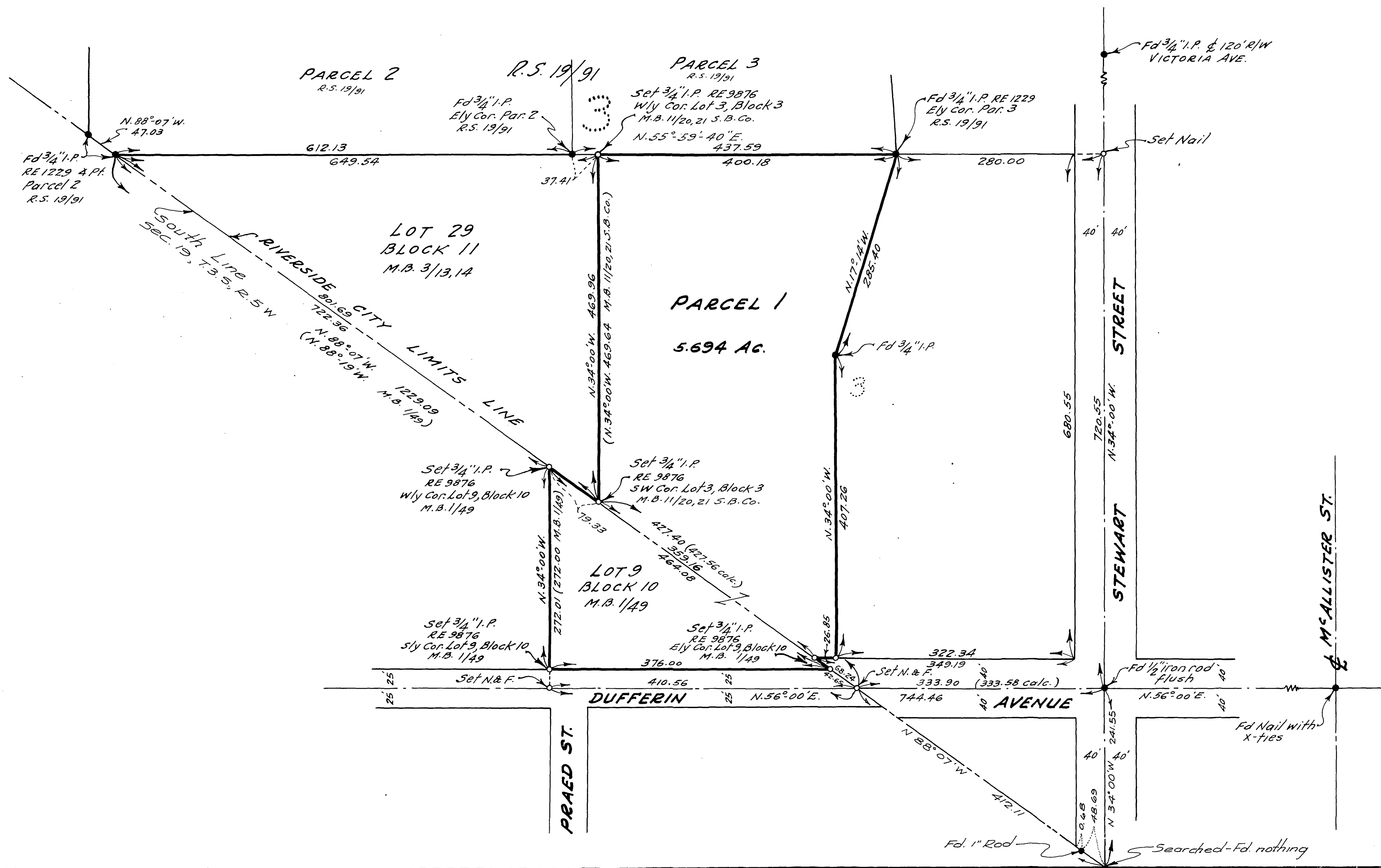


IN THE CITY OF RIVERSIDE, CALIFORNIA RECORD OF SURVEY

of Lot 9, Block 10 of Moulton & Praed Subdivision as shown by map recorded in Map Book 1, pages 49 & 50, Riverside County Records and a portion of Lot 3, Block 3 of Arlington Heights as shown by map recorded in Map Book 11, pages 20 & 21, San Bernardino County Records, in SW 1/4 Sec. 19 and NW 1/4 Sec. 30 T. 35., R. 5 W. S. B. B. & M.

Filed for Record at request of County Surveyor this 3rd day of March, 1961 at 10:50 AM in Book 33
of Record of Survey at Page 79
Fee \$ 5.00 No. _____
JACK A. ROSS County Recorder
By O. A. Neal Deputy

BY
ALBERT A. WEBB ASSOCIATES
CIVIL ENGINEERS
RIVERSIDE CALIFORNIA
MARCH 1961



ENGINEER'S CERTIFICATE
This map correctly represents a survey made by me or under my direction in conformance with the requirements of Chapter 15 of Division 3 of the Business and Profession Code at the request of Mrs. R. A. WEEDAN in February 1961.
Ernest N. Webb
Registered Civil Engineer No 9876

ENGINEER'S NOTE:
Basis of Bearings is the centerline of Stewart St., taken as N. 34° 00' W., as shown on map of Arlington Heights recorded in Map Book 11, pages 20 & 21, S. B. Co. Records.
Found monuments as noted at all points shown thus ●
Set monuments as noted at all points shown thus ○
All record maps referred to are Riverside County Records unless otherwise noted.
Distances shown thus (333.58 calc.) are calculated from map of Arlington Heights, M.B. 11/20, 21 S. B. Co. Records

COUNTY SURVEYOR'S CERTIFICATE
This map has been examined for conformance with the requirements of Chapter 15 of Division 3 of the Business and Profession Code this 31st day of MARCH, 1961
A. G. KEITH County Surveyor
By C. T. Worley Deputy