

33/91

Filed for Record at request of County Surveyor this 5th day of April, 1960 at 4:42 PM in Book 33 of Record of Survey at Page 9
Fee \$ 1.00 No

JACK A. ROSS County Recorder
By O.A. Wheat Deputy

IN THE CITY OF RIVERSIDE RECORD OF SURVEY

OF A PORTION OF THE S. E. 1/4 OF THE N. W. 1/4 AND THE S. W. 1/4 OF THE N. E. 1/4 OF SECTION 34, T. 2 S. R. 5 W., S. B. B. AND M.

NOV. 1960 J. F. DAVIDSON, C.E. SCALE 1"=100'

SURVEY MADE AT REQUEST OF HEERS BROS., INC. AND WALTER K. LEWIS

ENGINEER'S CERTIFICATE

This map correctly represents a survey made by me or under my direction in conformance with the requirements of Chapter 15 of Division 3 of the Business and Professions Code at the request of HEERS BROS., INC. in November, 1960.
J. F. Davidson
Registered Engineer No. 862.

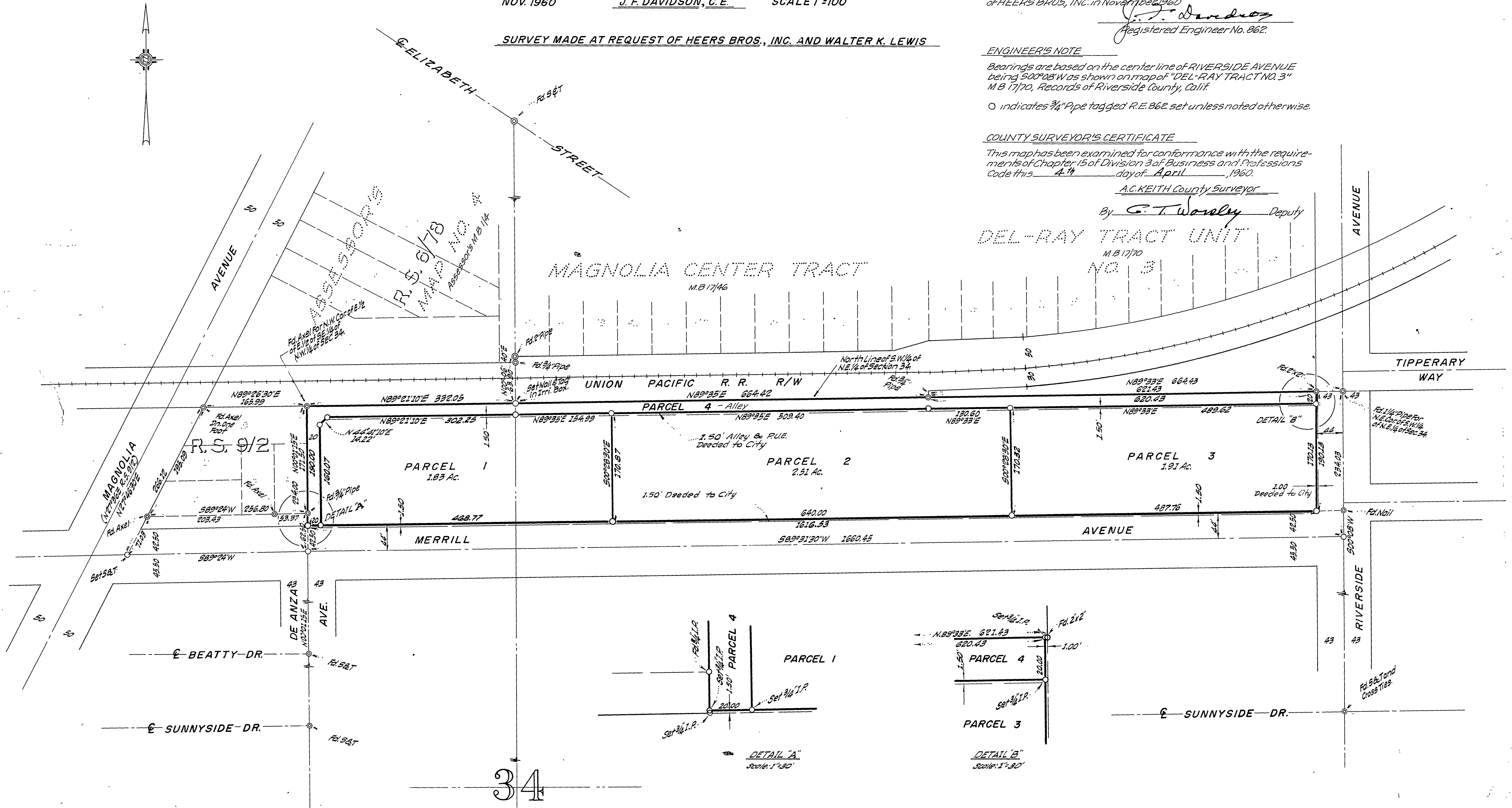
ENGINEER'S NOTE

Bearings are based on the center line of RIVERSIDE AVENUE being 500°03'W as shown on map of "DEL-RAY TRACT NO. 3" M.B. 1770, Records of Riverside County, Calif.
O indicates 3/4" Pipe tagged R.E. 862 set unless noted otherwise.

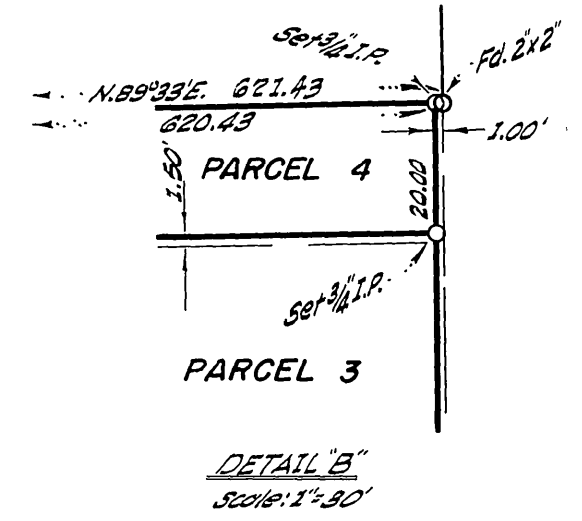
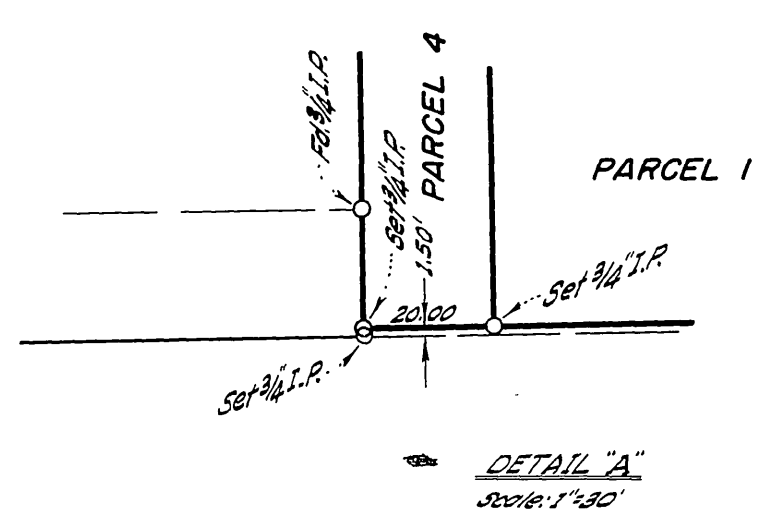
COUNTY SURVEYOR'S CERTIFICATE

This map has been examined for conformance with the requirements of Chapter 15 of Division 3 of Business and Professions Code this 4th day of April, 1960.
A.C. KEITH County Surveyor
By G.T. Worsley Deputy

DEL-RAY TRACT UNIT
M.B. 1770
NO. 3



34



RIVERSIDE COUNTY RECORDS