

34/21

# IN THE CITY OF RIVERSIDE RECORD OF SURVEY

OF LOTS 45 AND 54 OF SEID TRACT NO. 2, M.B. 26/6, RECORDS  
OF RIVERSIDE COUNTY, CALIFORNIA

APRIL 1961

J. F. DAVIDSON, C.E.

SCALE 1" = 50'

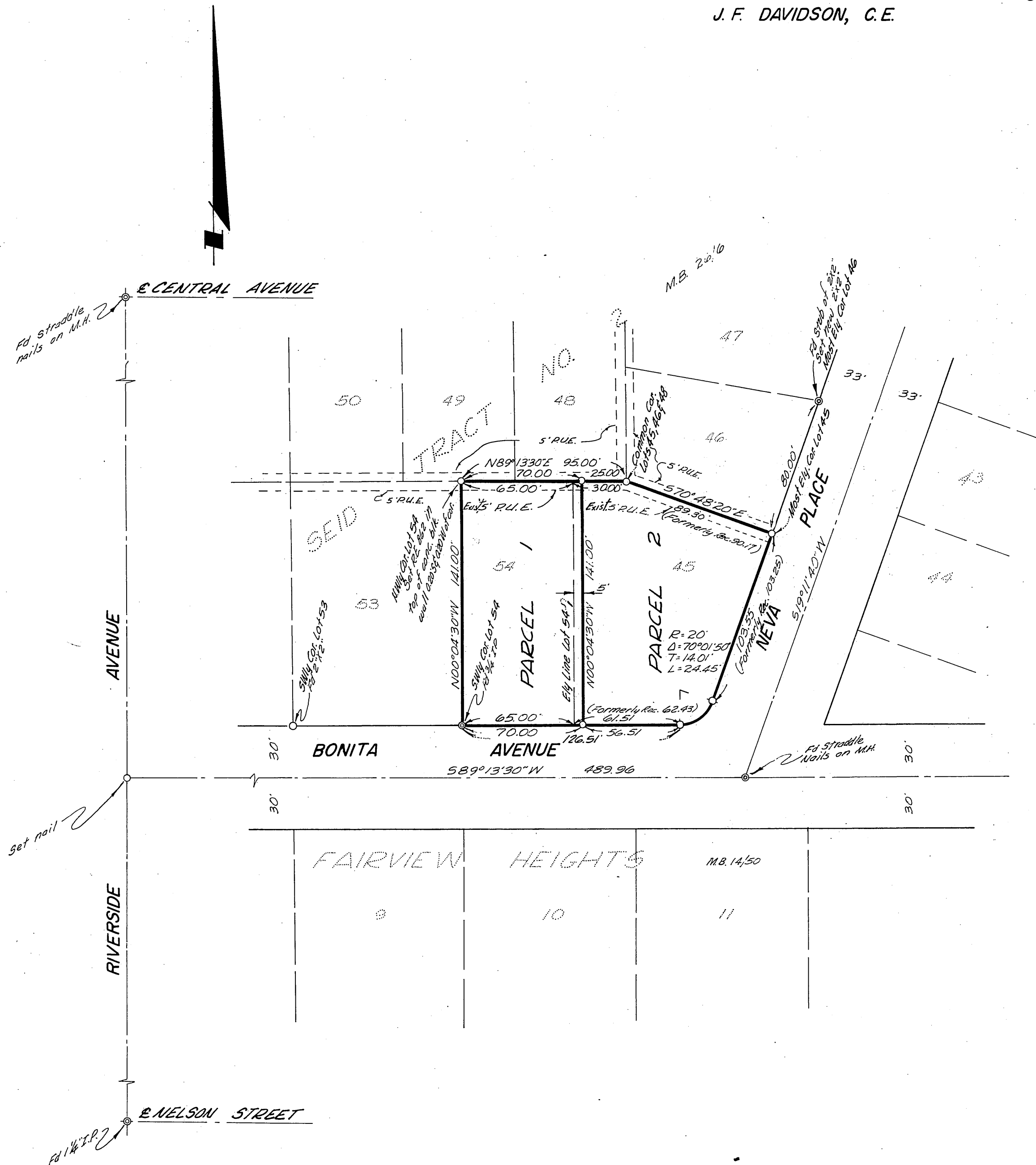
Filed for Record at request of County Surveyor this 7th day of  
June, 1961 at 1:30 P.M. in Book 34  
of Record of Survey at Page 71

Fee \$ 5.00

JAGK A. ROSS County Recorder

By O.A. Mead Deputy

MADE AT THE REQUEST OF GEORGE LEWIS CRAFTS



### ENGINEER'S CERTIFICATE

This map correctly represents a survey made by me or under my direction in conformance with the requirements of Chapter 15 of Division 3 of the Business and Professions Code at the request of George Lewis Crafts in April, 1960.

George E. McCarty  
Registered Civil Engineer No. 10688

### ENGINEER'S NOTE

Bearings are based on the  $\epsilon$  of Bonita Avenue as being 589°13'30"W as shown on Seid Tract No. 2, M.B. 26/6, Records of Riverside County, California.

O indicates 2x2", tagged R.E. 862, set, unless otherwise noted.

### COUNTY SURVEYOR'S CERTIFICATE

This map has been examined for conformance with the requirements of Chapter 15 of Division 3 of the Business and Professions Code this 15th day of June, 1961.

A.C. KEITH County Surveyor

By P.T. Worsley Deputy

FB 650-78

City R/S #522

RS 34/21 S-7187

RS 34/21 S-7187