

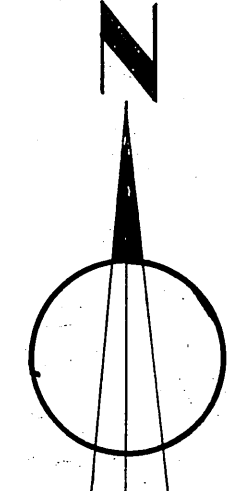
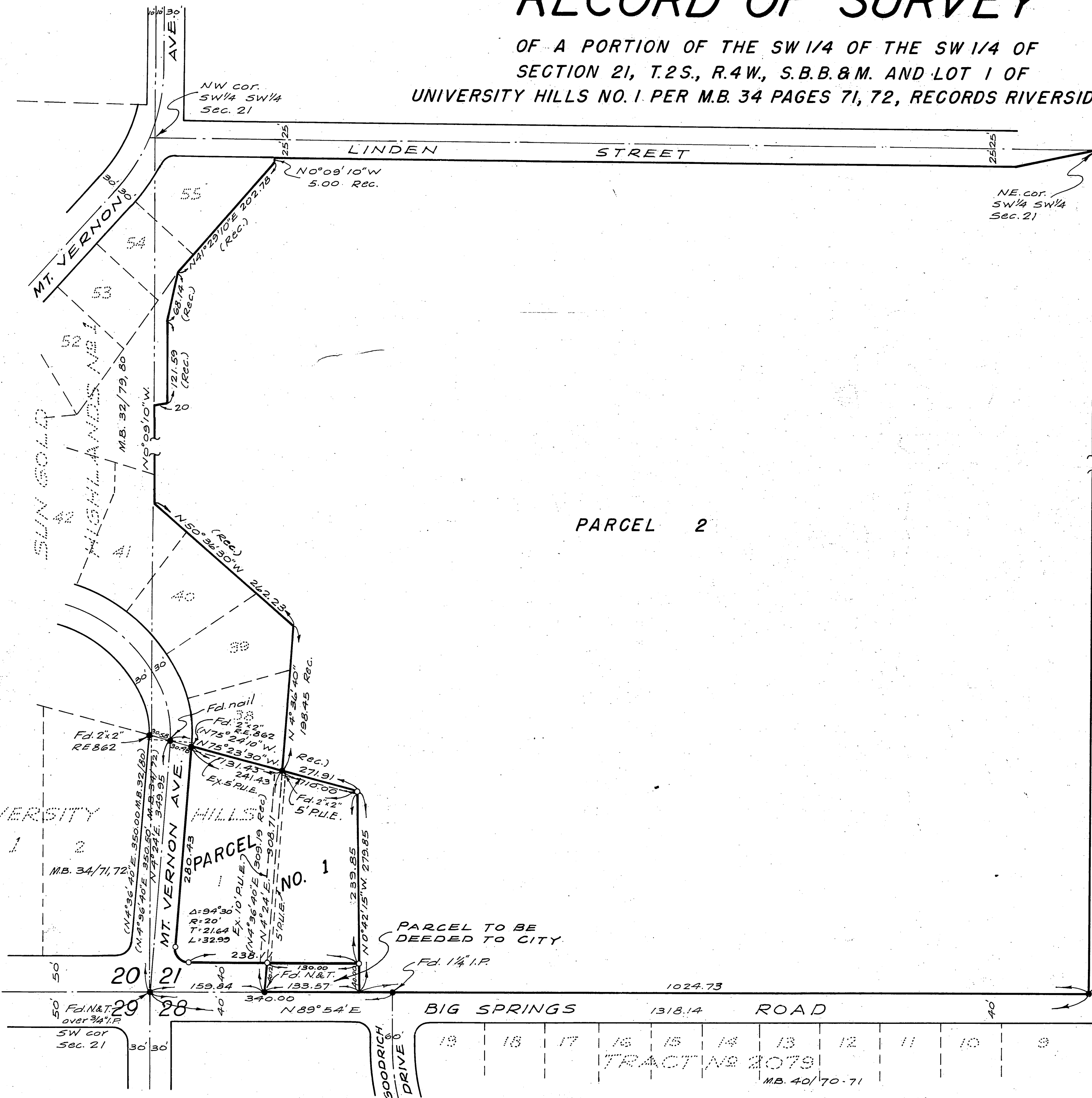
24/24

IN THE CITY OF RIVERSIDE

RECORD OF SURVEY

OF A PORTION OF THE SW 1/4 OF THE SW 1/4 OF SECTION 21, T.2S., R.4W., S.B.B.&M. AND LOT 1 OF UNIVERSITY HILLS NO. 1 PER M.B. 34 PAGES 71, 72, RECORDS RIVERSIDE CO.

Filed for Record at request of County Surveyor this 2nd day of APR, 1961 of 1:30 P.M. in Book 34 of Record of Survey at Page 44
Fee \$5.00 No. _____
JACK A. ROSS County Recorder
By O.A. Heat Deputy



Scale: 1"=100'

~BY~
ALBERT A WEBB ASSOCIATES
CIVIL ENGINEERS
RIVERSIDE CALIFORNIA
APRIL, 1961

ENGINEER'S CERTIFICATE

This map correctly represents a survey made by me or under my direction in conformance with the requirements of Chapter 15 of Division 3 of the Business and Profession Code at the request of ISLANDER CORPORATION during April 1961
Ernest H. Webb
Registered Civil Engineer No 9876

ENGINEER'S NOTE:

Basis of Bearings is the centerline of Big Springs Road taken as N89°54'E, as same is shown by map of TRACT N° 2079 recorded in Map Book 40, pages 70 & 71, Rec. Riv. Co., Calif.
Found monuments as noted at all points shown thus ●
Set 3/4" Iron Pipe tagged R.E. 9876 at all points shown thus ○ unless otherwise noted.
Parcel 2 is shown in order to conform to City Ordinance and does not represent an actual survey.

COUNTY SURVEYOR'S CERTIFICATE

This map has been examined for conformance with the requirements of Chapter 15 of Division 3 of the Business and Profession Code this 1st day of JUNE 1961
A.C. KEITH County Surveyor
By G.T. Worley Deputy

RS 34/24 S-783

RS 34/24 S-783