

34/26

IN THE CITY OF RIVERSIDE

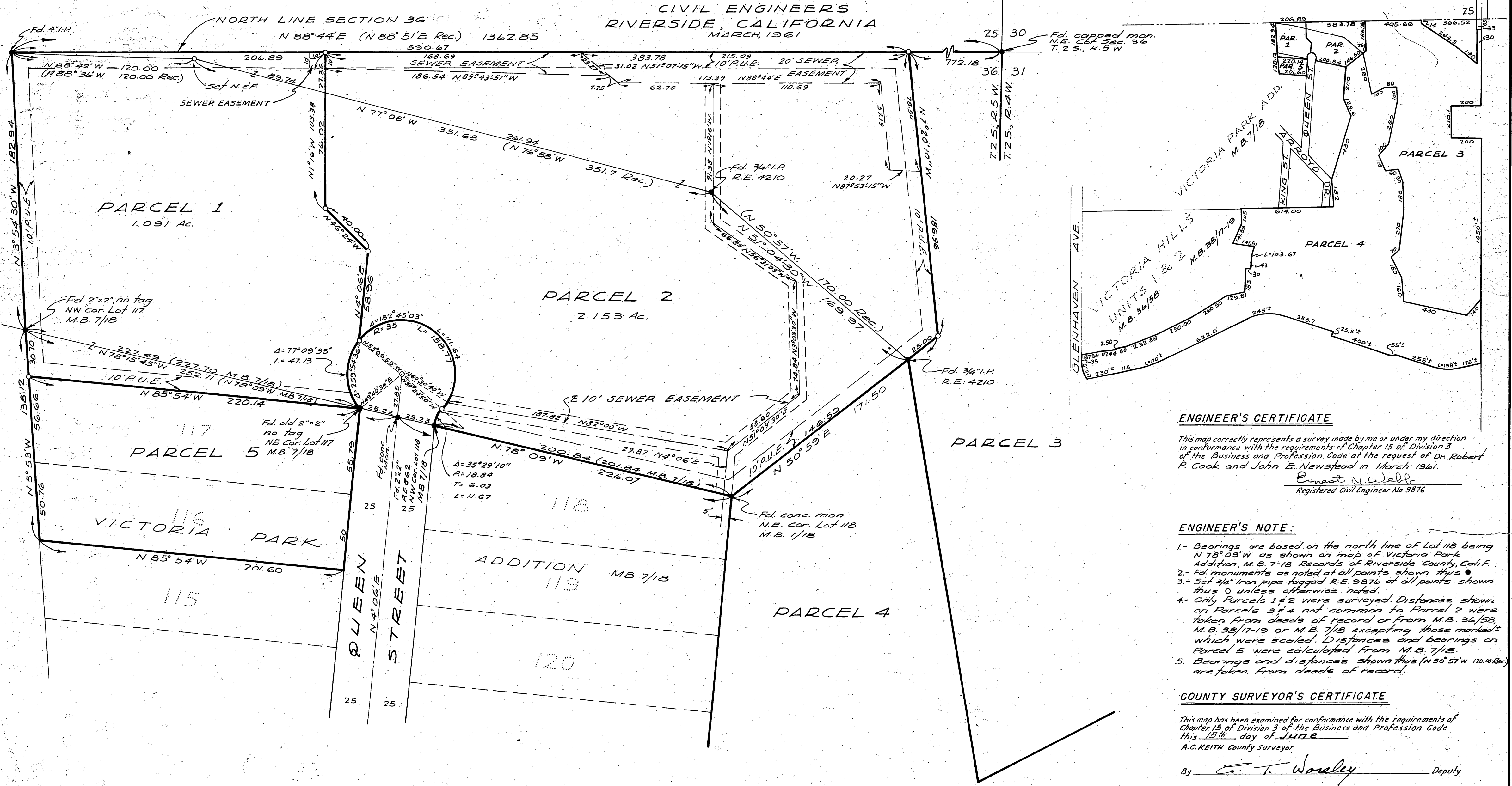
RECORD OF SURVEY

OF LOTS 116 AND 117 OF VICTORIA PARK ADDITION AS SHOWN BY MAP BOOK 7,
PAGE 18, RIVERSIDE COUNTY RECORDS AND A PORTION OF N 1/2, NE 1/4 SECTION 36, T.2S., R.5W., S.B.B. & M.

Filed for Record at request of County Surveyor this 15th day of
JULY, 1961 at 10:12 A.M. in Book 34
of Record of Survey at Page 76
Fee \$5.00 No.
JACK A. ROSS County Recorder
By O.A. [Signature] Deputy

SCALE 1" = 40'

BY
ALBERT A. WEBB ASSOCIATES
CIVIL ENGINEERS
RIVERSIDE, CALIFORNIA
MARCH, 1961



ENGINEER'S CERTIFICATE

This map correctly represents a survey made by me or under my direction in conformance with the requirements of Chapter 15 of Division 3 of the Business and Profession Code at the request of Dr. Robert P. Cook and John E. Newstead in March 1961.
Ernest N. Webb
Registered Civil Engineer No 9876

ENGINEER'S NOTE:

- 1- Bearings are based on the north line of Lot 118 being N 78° 09' W as shown on map of Victoria Park Addition, M.B. 7-18 Records of Riverside County, Calif.
- 2- Fd. monuments as noted at all points shown thus ●
- 3- Set 3/4" iron pipe tagged R.E. 9876 at all points shown thus ○ unless otherwise noted.
- 4- Only Parcels 1 & 2 were surveyed. Distances shown on Parcels 3 & 4 not common to Parcel 2 were taken from deeds of record or from M.B. 36/58, M.B. 35/17-19 or M.B. 7/18 excepting those marked * which were scaled. Distances and bearings on Parcel 5 were calculated from M.B. 7/18.
5. Bearings and distances shown thus (N 50° 57' W 170.00 Rec.) are taken from deeds of record.

COUNTY SURVEYOR'S CERTIFICATE

This map has been examined for conformance with the requirements of Chapter 15 of Division 3 of the Business and Profession Code this 15th day of JULY
A.C. KEITH County Surveyor
By E. T. Worsley Deputy

RS 34/26 5-1874