

24/43

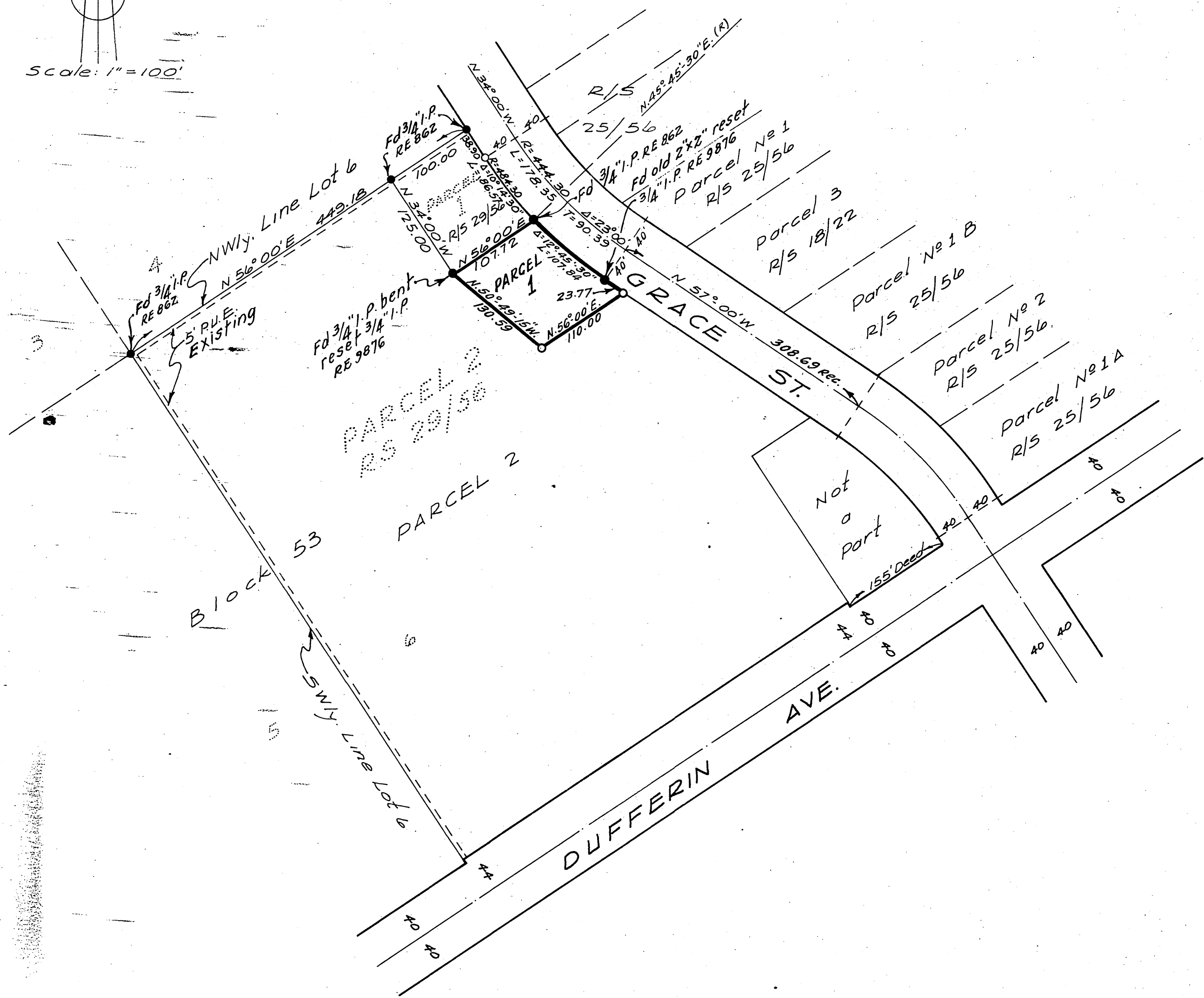
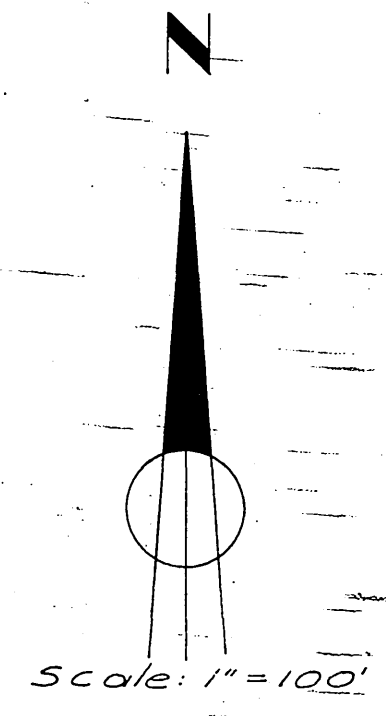
IN THE CITY OF RIVERSIDE

# RECORD OF SURVEY

OF A PORTION OF LOT 6, BLOCK 53 OF ARLINGTON HEIGHTS, MAP BOOK II, PAGES 20 AND 21, RECORDS OF SAN BERNARDINO COUNTY, CALIFORNIA.

BY  
ALBERT A. WEBB ASSOCIATES  
CIVIL ENGINEERS  
RIVERSIDE, CALIFORNIA.  
December, 1960.

Filed for Record at request of County Surveyor this 3rd day of July, 1961 at 11:15 A.M. in Book 24 of Record of Survey at Page 4-3  
Fee \$ 5.00 No. \_\_\_\_\_  
JACK A. ROSS County Recorder  
By O.A. Wheat Deputy



Survey made at the request of Mr. Joe Marietta.

### ENGINEER'S CERTIFICATE

This map correctly represents a survey made by me or under my direction in conformance with the requirements of Chapter 15 of Division 3 of the Business and Profession Code at the request of Mr. Joe Marietta in December 1960.

Albert A. Webb  
Registered Civil Engineer No 9876

### ENGINEER'S NOTE:

1. - Basis of Bearings is the northwesterly lines of Parcels 1 & 2 of Record of Survey Book 29, page 56; Records of Riverside County, Calif. taken as N. 56° 00' E.
2. - Set 3/4" Iron Pipe tagged RE. 9876 at all points shown thus 0
3. - Found monuments as noted at all points shown thus ●

### COUNTY SURVEYOR'S CERTIFICATE

This map has been examined for conformance with the requirements of Chapter 15 of Division 3 of the Business and Profession Code this 3rd day of July, 1961

A.G. KEITH County Surveyor  
By C.H. Worsley Deputy

RS 24/43 S-787

RS 24/43 S-787