

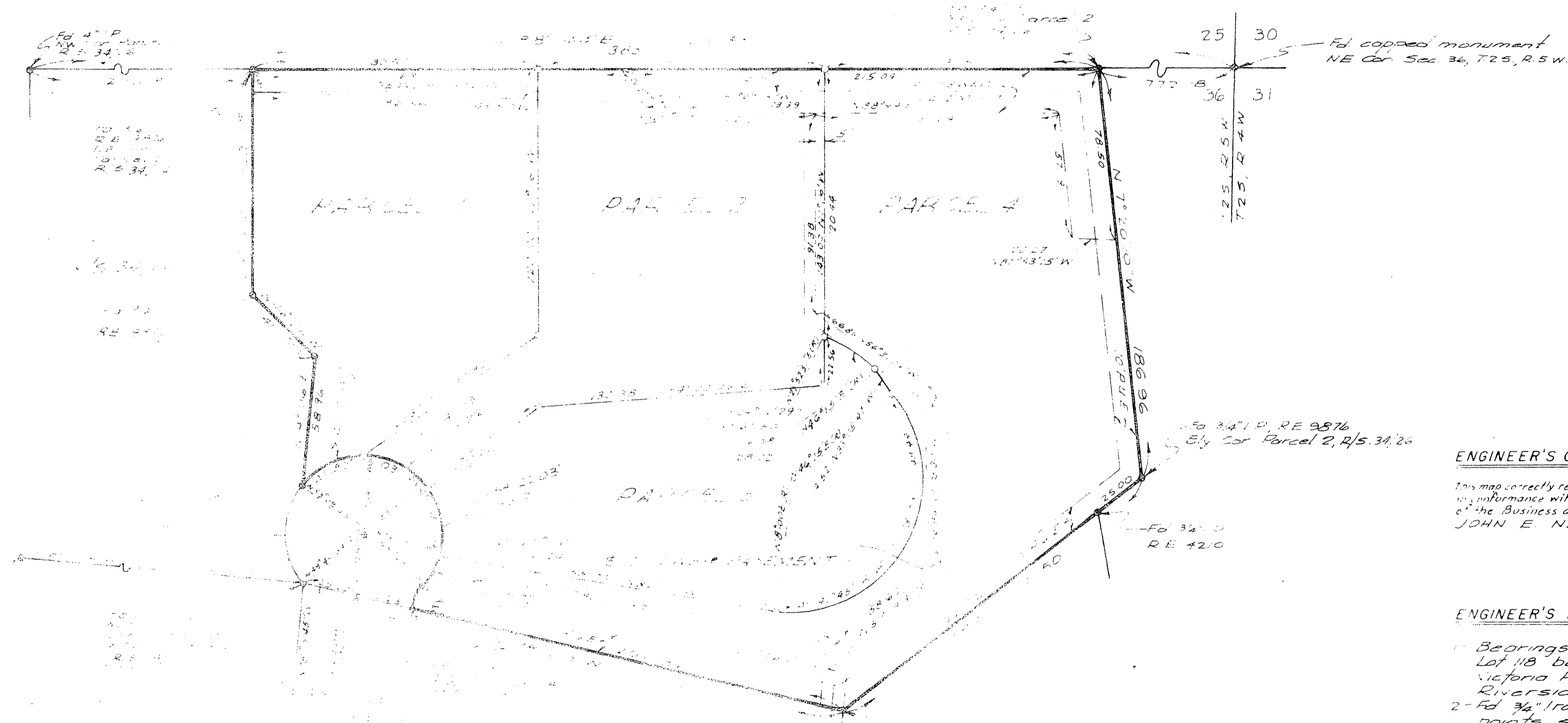
# IN THE CITY OF RIVERSIDE RECORD OF SURVEY

OF A PORTION OF N 1/2 OF NE 1/4 SECTION 36, T.2S., R.5W., S.B.B. & M.

By  
ALBERT A WEBB ASSOCIATES  
CIVIL ENGINEERS  
RIVERSIDE CALIFORNIA  
MARCH, 1961

Filed for Record at request of County Surveyor this 26 day of July, 1961 at 11:00 A.M. in Book 34 of Record of Survey at Page 58  
Fee \$ 5.00 No. 17

JACK A. ROSS County Recorder  
By William H. Balogh Deputy



### ENGINEER'S CERTIFICATE

This map correctly represents a survey made by me or under my direction in performance with the requirements of Chapter 15 of Division 3 of the Business and Profession Code at the request of JOHN E. NEWSTEAD IN APRIL, 1961  
Ernest J. ...  
Registered Civil Engineer No 9876

### ENGINEER'S NOTE:

- 1- Bearings are based on the north line of Lot 118 being N 78° 09' W as shown on map of Victoria Park Addition M.B. 7/18, Records of Riverside County, California.
- 2- Fd 3/4" Iron Pipe tagged R.E. 9876 at all points shown thus  $\odot$  unless otherwise noted.
- 3- Set 3/4" Iron Pipe tagged R.E. 9876 at all points shown thus  $\circ$ .

### COUNTY SURVEYOR'S CERTIFICATE

This map has been examined for conformance with the requirements of Chapter 5 of Division 3 of the Business and Profession Code this 26th day of July, 1961.  
A. KEITH County Surveyor