

34/62

IN THE CITY OF RIVERSIDE

RECORD OF SURVEY

OF A PORTION OF LOT 2 OF EVANS RIO RANCHO, M. B. 10, PG. 52-54, REC. RIVERSIDE CO., CALIF., A PORTION OF LOT 12 OF RIO RANCHO, M. B. 32, PG. 71, REC. RIVERSIDE CO., CALIF., AND LOT 24 OF SUNLAND ESTATES, M. B. 36, PG. 69-70, REC. RIVERSIDE CO., CALIF. IN JURUPA RANCHO.

MAY 1961

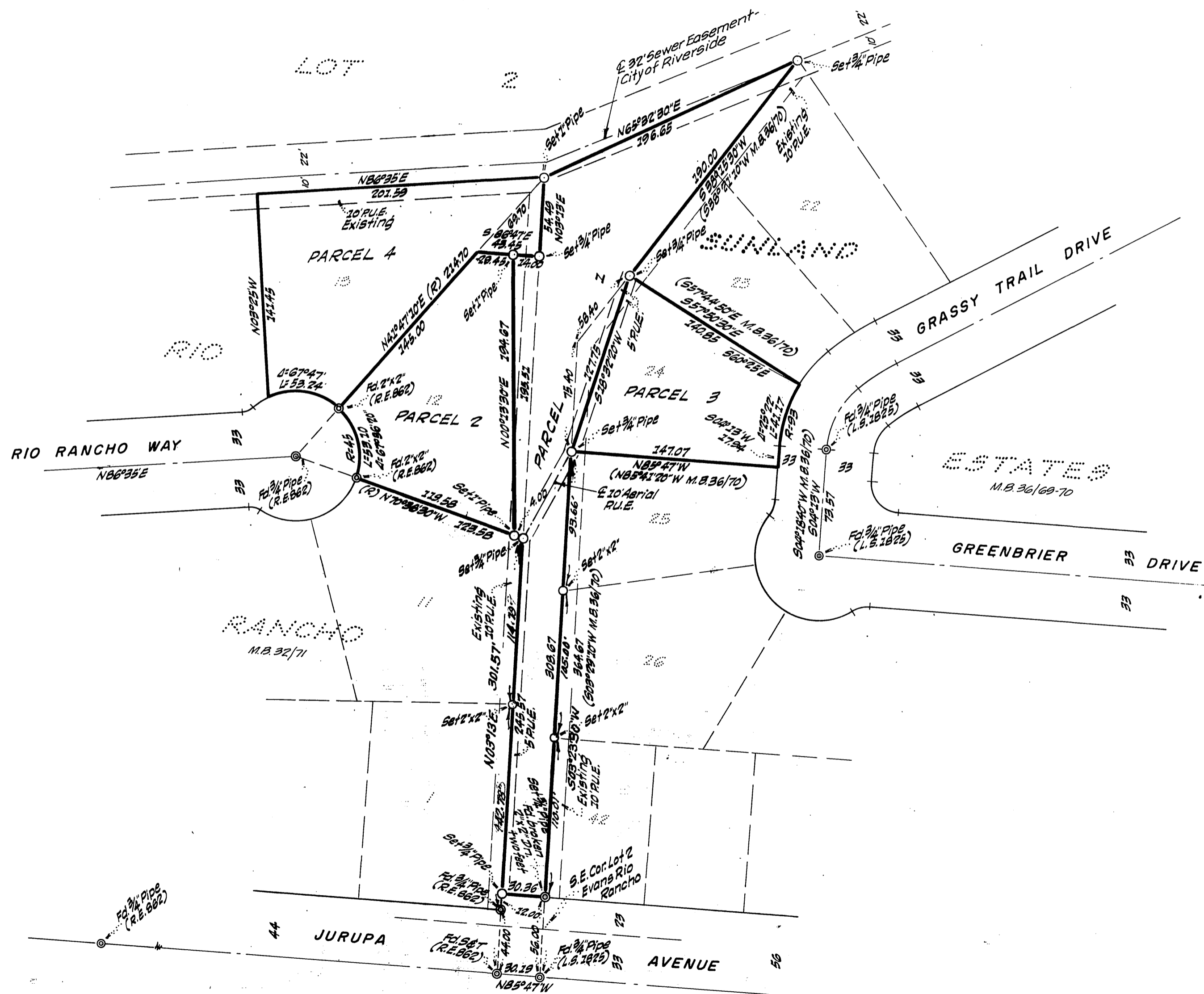
J. F. DAVIDSON, C. E.

SCALE 1"=60'

Filed for Record at request of County Surveyor this 2 day of August, 1961 at 2:15 P. M. in Book 34 of Record of Survey of Page 62.
Fee \$8 S. 00 No. _____
JACK A. ROSS County Recorder
By William W. Dole Deputy



SURVEY MADE AT REQUEST OF R. G. HEERS



ENGINEER'S CERTIFICATE

This map correctly represents a survey made by me or under my direction in conformance with the requirements of Chapter 15 of Division 3 of the Business and Professions Code of the State of California, as amended, and the Rules and Regulations of the State Board of Professional Engineers, dated May 1961.

James F. Davidson Jr.
Licensed Land Surveyor No. 8018

ENGINEER'S NOTE

Bearings are based on the center line of JURUPA AVENUE being N85°47'W as shown on map of "RIO RANCHO", M. B. 32, Pg. 71, Records of Riverside County, California.

COUNTY SURVEYOR'S CERTIFICATE

This map has been examined for conformance with the requirements of Chapter 15 of Division 3 of the Business and Professions Code of the State of California, as amended, and the Rules and Regulations of the State Board of Professional Surveyors, dated August 1961.

A. C. KEITH County Surveyor
By E. T. Worsley Deputy

R/S 34/62

R/S 34/62

RS 34/62