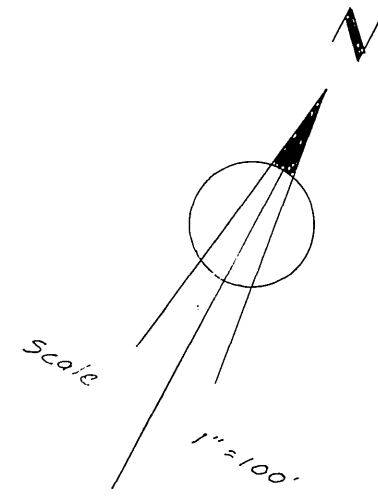
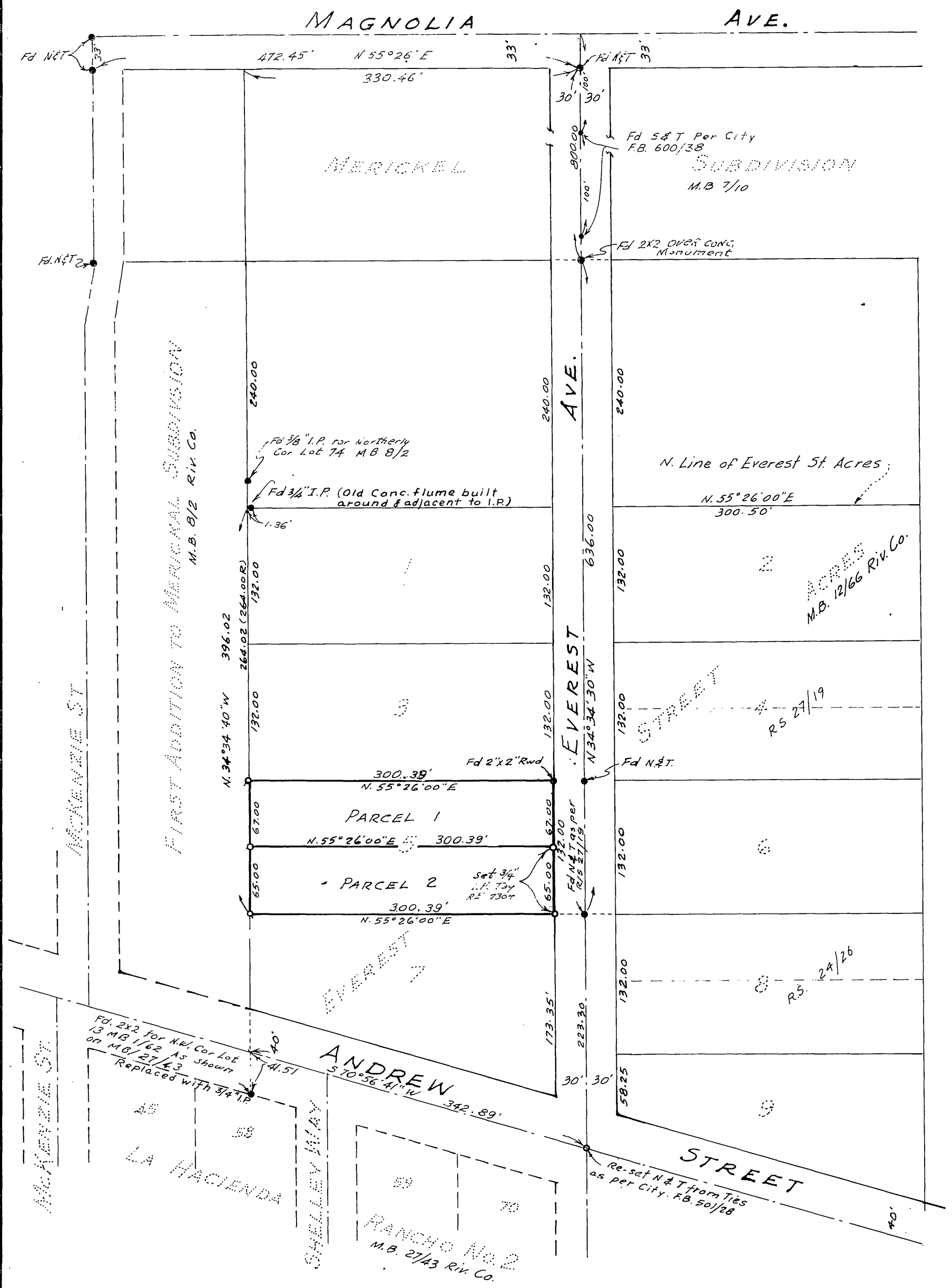


IN THE CITY OF RIVERSIDE RECORD OF SURVEY

Being a Survey of Lot 5 of Everest St. Acres as shown by Map
on file in Book 12 of Maps Page 60, Records of Riverside County California
June 1961 Scale 1 in. = 100 ft.

ENGINEER: HUGH M. GALLAHER
6848 Magnolia Ave.
Riverside, California.

Filed for record at request of County Surveyor this 14th day of August
1961 at 4:20 P.M. in Book 34 of Record of Survey at Page 17
Fee \$5.00
By Jack A. Ross
County Recorder
Deputy
By O.A. Wheat
Deputy



This map correctly represents a survey made by me or under my direction in conformance with the requirements of Chapter 15 of Division 3 of the Business and Professions Code at the request of BARBARA C. SPICER, 3630 EVEREST AVENUE, RIVERSIDE, CALIFORNIA in June, 1961.

Hugh M. Gallaher
R.E. 7304

This map has been examined for conformance with the requirements of Chapter 15 of Division 3 of the Business and Professions Code this 14th day of August 1961.

A. G. KEITH
County Surveyor
By C. T. Wardsley Deputy

ENGINEER'S NOTES:
The Basis of Bearings has been taken as N. 34° 34' 30" W. on the Center Line of Everest Ave., shown on the M.B. 12/66, Records of Riverside County
● Indicates Monuments as found
○ Indicates 2"x2" Redwood Stakes, tagged R.E. 7304, set at corners, unless otherwise noted