

Filed for record at request of County Surveyor this 17th day of August, 1961, at 4:45 P.M. in Book 24 of Record of Survey of Page 74

Fee \$5.00 No. JACK A. ROSS County Recorder By O.A. Mead Deputy

IN THE CITY OF RIVERSIDE

RECORD OF SURVEY

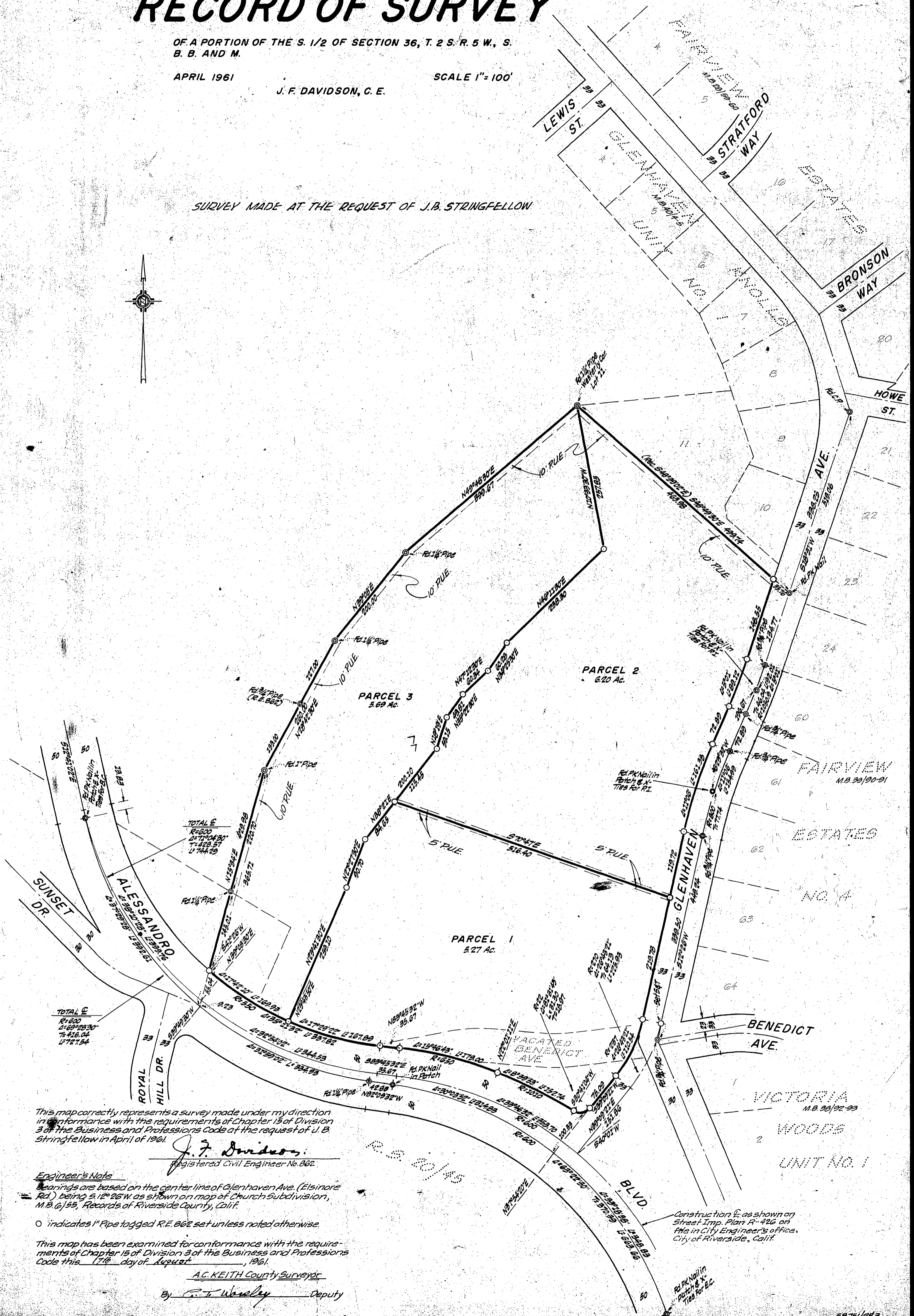
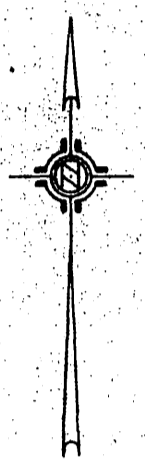
OF A PORTION OF THE S. 1/2 OF SECTION 36, T. 2 S. R. 5 W., S. B. B. AND M.

APRIL 1961

J. F. DAVIDSON, C. E.

SCALE 1" = 100'

SURVEY MADE AT THE REQUEST OF J.B. STRINGFELLOW



This map correctly represents a survey made under my direction in performance with the requirements of Chapter 15 of Division 3 of the Business and Professions Code at the request of J. B. Stringfellow in April of 1961.

J. F. Davidson
Registered Civil Engineer No. 862

Engineer's Note
Bearings are based on the center line of Glenhaven Ave. (Elsmore Rd.) being S. 12° 26' W. as shown on map of Church Subdivision, M.B. 6155, Records of Riverside County, Calif.

○ indicates 1" Pipe tagged R.E. 862 set unless noted otherwise.

This map has been examined for conformance with the requirements of Chapter 15 of Division 3 of the Business and Professions Code this 17th day of August, 1961.

A.C. Keith County Surveyor
By P.T. Wansley Deputy

Construction E. as shown on Street Imp. Plan R-426 on file in City Engineer's office, City of Riverside, Calif.

34/74
RS 34/74