

IN THE COUNTY OF RIVERSIDE

# RECORD OF SURVEY

OF A PORTION OF LOT 2 IN BLOCK 60 AND A PORTION OF LOT PP OF TRACT NO. 2 OF LA SIERRA HEIGHTS, AS SHOWN BY MAP ON FILE IN BOOK 7 OF MAPS, AT PAGE 66 THEREOF, RECORDS OF RIVERSIDE COUNTY CALIFORNIA... IN RANCHO LA SIERRA SEPULVEDA.

AUGUST 1961

SCALE 1" = 60'

J. F. DAVIDSON CIVIL ENGINEER

HALLMARK DEVELOPMENT M.B. 28/354

(N. 62° 02' 30" E. M.B. 39/4)

Filed for record at the request of County Surveyor this 6 day of Sept., 1961 at 3:30 P.M. in Book 34 of Record of Survey at Page 80.

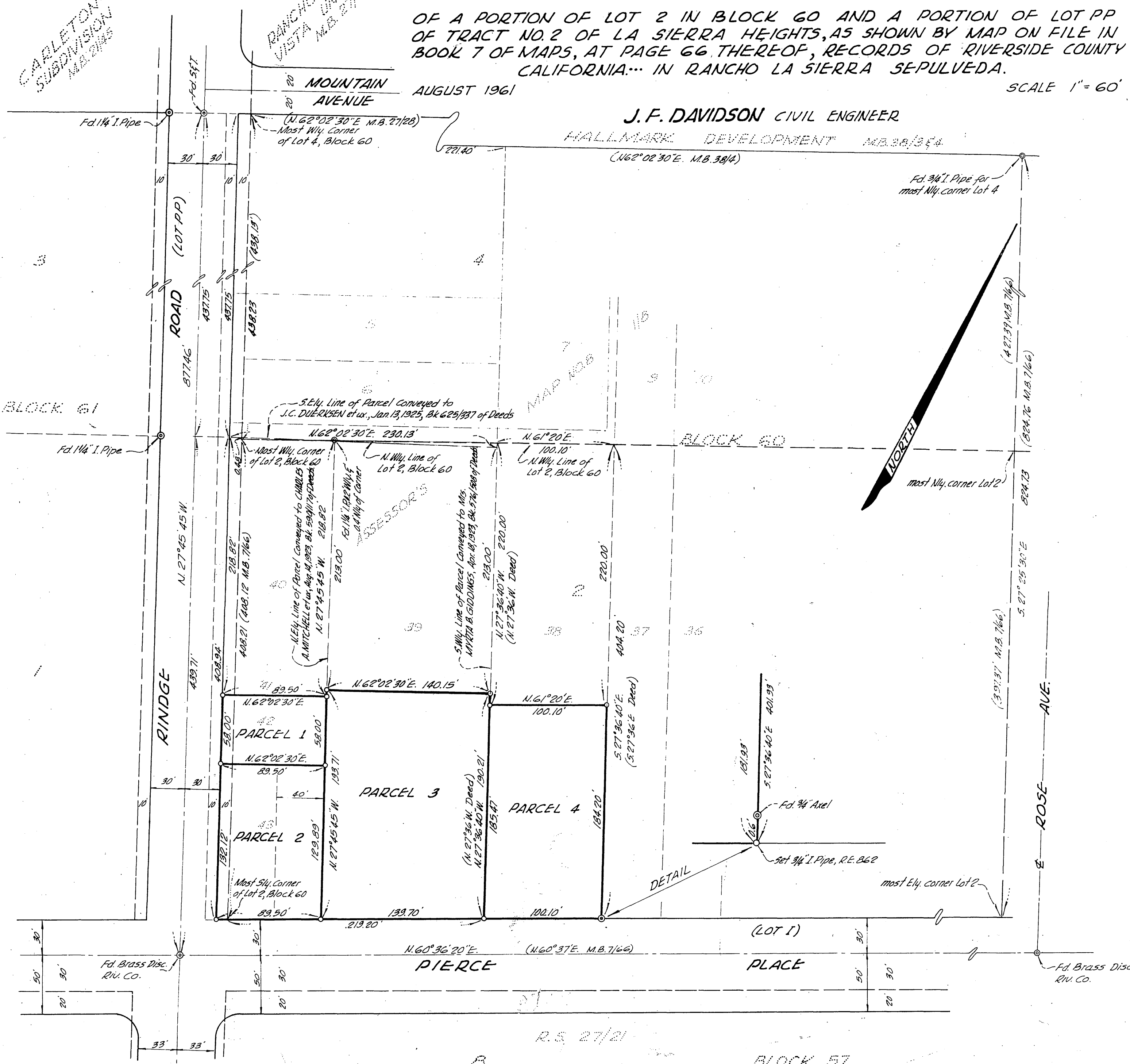
Fee \$ 5.00 No. 70161

JACK A. ROSS County Recorder

By William R. Budge Deputy

CARLETON SUBDIVISION M.B. 21/215

RANCHO MONTE VISTA M.B. 27/28



SURVEY MADE AT THE REQUEST OF:  
GENERAL CONFERENCE INSURANCE SERVICE

### ENGINEER'S CERTIFICATE

This map correctly represents a survey made by me or under my direction in conformance with the requirements of Chapter 15 of Division 3 of the Business and Professions Code of the request of General Conference Insurance Service in August, 1961.

J. F. Davidson  
Registered Civil Engineer No. 862

### ENGINEER'S NOTE

Bearings are based on the center line of RINDGE ROAD (Lot PP) being N. 27° 45' 45" W. as shown on map of Tract No. 2 of La Sierra Heights, M.B. 7, Pg. 66, Records of Riverside County, California.

Set 3/4" Iron Pipe, tagged R.E. 862, at all points shown thus:

### COUNTY SURVEYOR'S CERTIFICATE

This map has been examined for conformance with the requirements of Chapter 15 of Division 3 of the Business and Professions Code this 6th day of September, 1961.

A. C. KEITH County Surveyor

By C. T. Worsley Deputy