

IN THE CITY OF RIVERSIDE

# RECORD OF SURVEY

OF LOTS 138 AND 139 OF UNIVERSITY HILLS UNIT 3, AS SHOWN BY MAP ON FILE IN BOOK 35 OF MAPS, A PAGES 67 THRU 69 THEREOF, RECORDS OF RIVERSIDE COUNTY, CALIFORNIA. IN SECTION 28, T.2S, R.4W. S.B.B.F.M.

AUGUST 1961

SCALE 1"=50'

J. F. DAVIDSON, C. E.

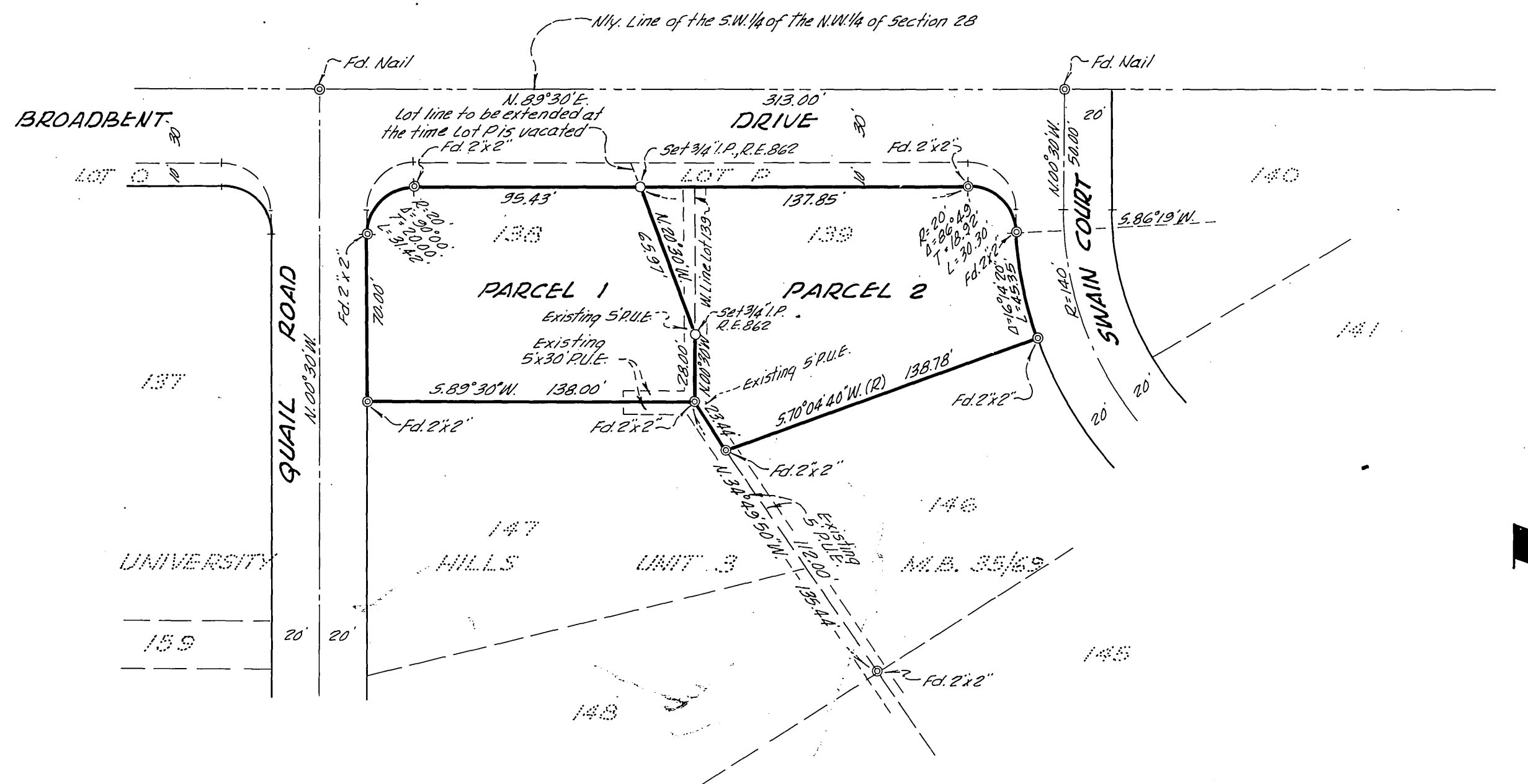
Filed for record at the request of County Surveyor this 22 day of September, 1961 at RIVERSIDE in Book 35 of Record of Survey at Page 3

Fee \$ 5.00 No. 01602

JACK A. ROSS County Recorder

By William H. Balogh Deputy

SURVEY MADE AT THE REQUEST OF SUN GOLD INC.



### ENGINEER'S CERTIFICATE

This map correctly represents a survey made by me or under my direction in conformance with the requirements of Chapter 15 of Division 3 of the Business and Professions Code at the request of SUN GOLD INC. in AUGUST, 1961.

J. F. Davidson  
Registered Civil Engineer No. 862

### ENGINEER'S NOTE

Bearings are based on the N.W. line of the S.W. 1/4 of the N.W. 1/4 of Section 28, T.2S, R.4W. being N. 89° 30' E. as shown on map of University Hills Unit 3, M.B. 35, Pgs 67-69, Rec. Riv. Co., Calif.

### COUNTY SURVEYOR'S CERTIFICATE

This map has been examined for conformance with the requirements of Chapter 15 of Division 3 of the Business and Professions Code this 22 day of September, 1961.

A. C. KEITH County Surveyor

By C. T. Worsley Deputy