

IN THE CITY OF RIVERSIDE

# RECORD OF SURVEY

OF A PORTION OF BLOCKS 6 & 7 OF ROCKLEDGE, M.B. 4-50, RECORDS OF RIVERSIDE COUNTY, CALIFORNIA AND A PORTION OF LOTS 76, 79 & 80 OF HALLS ADDITION DIVISION "D", M.B. 9-4, RECORDS OF SAN BERNARDINO COUNTY, CALIFORNIA, LOCATED IN SECTION 35, T.25. R.5W, S.B. & M. AUGUST 1961

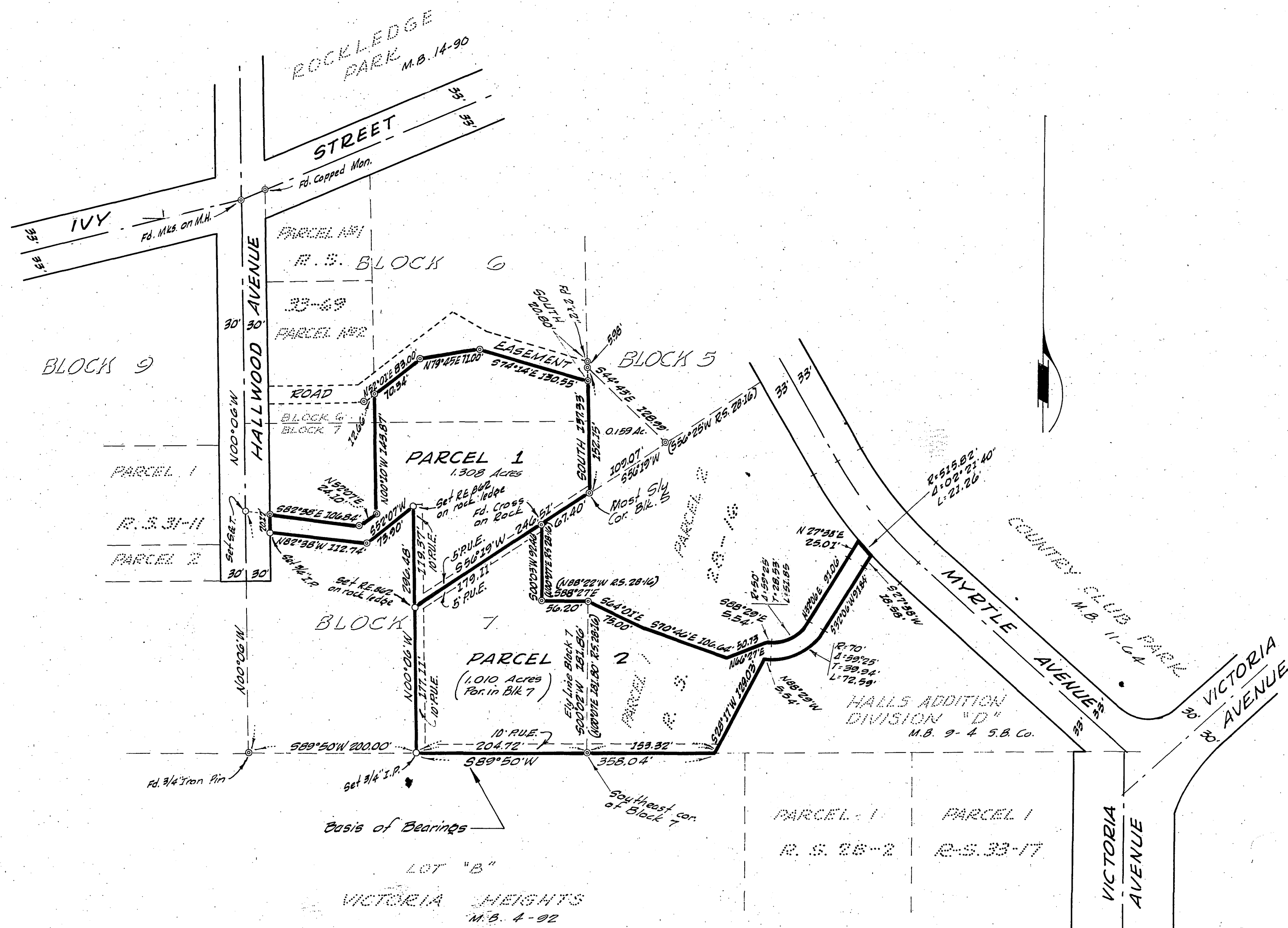
J.F. DAVIDSON, C.E.

Filed for record at the request of County Surveyor this 17<sup>th</sup> day of October, 1961 at 1:30 P.M. in Book 35 of Record of Survey at Page 15.

Fee \$ 5.<sup>00</sup> No. 19610

JACK A. ROSS County Recorder

By William D. Dale Deputy



SURVEYED AT THE REQUEST OF  
ALBERT FORD

### ENGINEER'S CERTIFICATE

This map correctly represents a survey made by me or under my direction in conformance with the requirements of Chapter 15 of Division 3 of the Business and Professions Code at the request of Albert Ford in August, 1961.

J. F. Davidson  
Registered Civil Engineer No. 862

### ENGINEER'S NOTE

Bearings are based on the southerly line of Block 7 of Rockledge, as shown on Record of Survey 28-16, Records of Riverside County, California, which bears S 89° 50' W.

⊙ Indicates 3/4" Iron Pipe found unless otherwise indicated.

All bearings and distances shown on Parcel 1 of Record of Survey 28-16, with the exception of the Westerly line, are record information taken from said Record of Survey and were not re-measured.

### COUNTY SURVEYOR'S CERTIFICATE

This map has been examined for conformance with the requirements of Chapter 15 of Division 3 of the Business and Professions Code this 17<sup>th</sup> day of October, 1961.

A.C. KEITH County Surveyor

By A.C. Keith

RS 35/15

RS 35/15

RS 35/15

City R/S 618