

IN THE CITY OF RIVERSIDE  
**RECORD OF SURVEY**

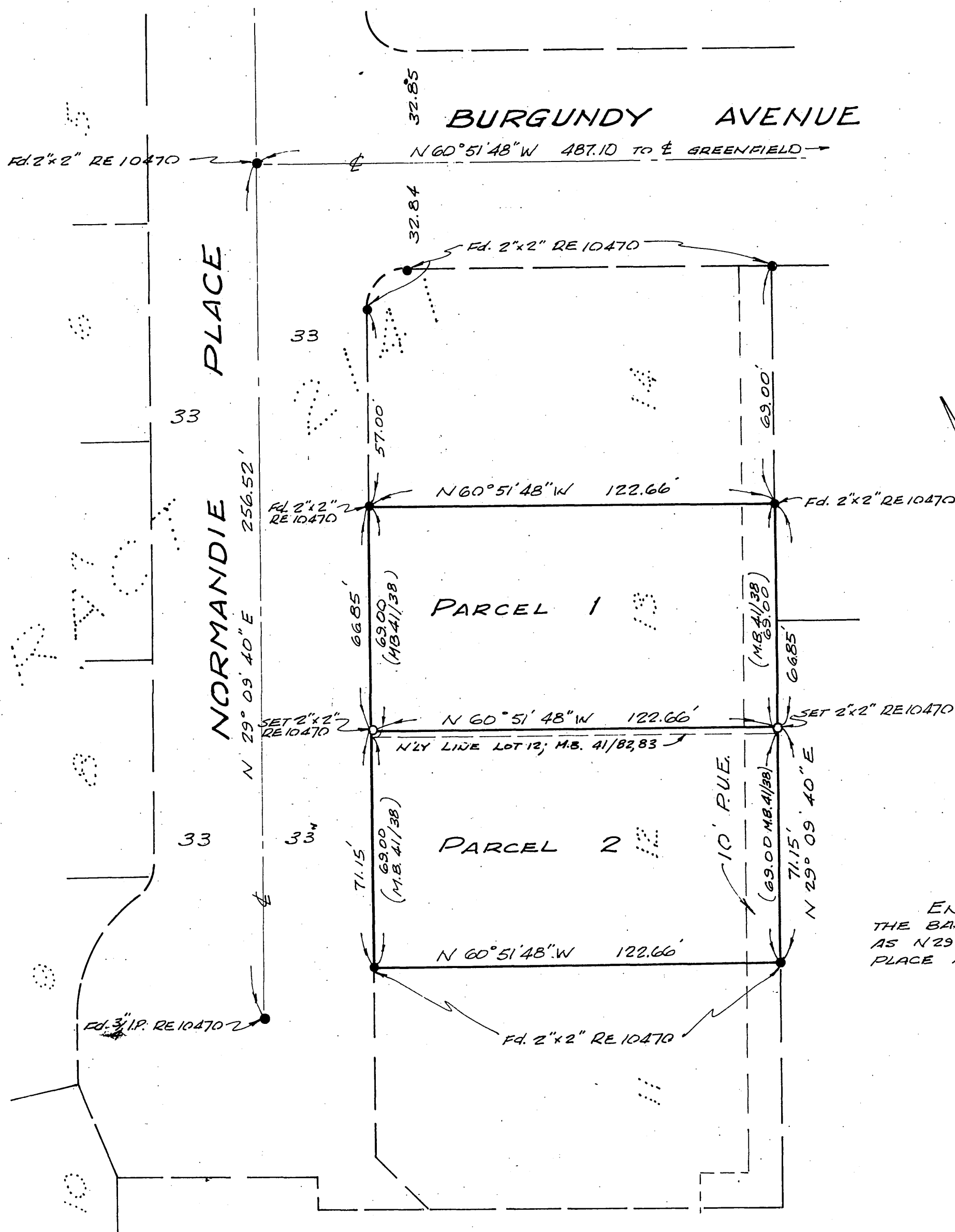
BEING A SURVEY OF LOTS 12 AND 13; TRACT 2141  
 AS RECORDED IN BOOK 41, PAGES 82 AND 83, OF MAPS  
 RECORDS OF RIVERSIDE COUNTY CALIFORNIA

SEPTEMBER 1961

SCALE 1" = 30'

**ROBERT L. TAYLOR**  
 CIVIL ENGINEER

Filed for record at request of County Surveyor this 3 day of Nov.  
 1961 at 4:30 P.M. in Book 35 of Record of Survey at Page 22  
 Fee \$ 5.00  
 No. 10470  
 County Recorder Jack A. Ross  
 By William R. Boleph  
 Deputy



ENGINEERS NOTES  
 THE BASIS OF BEARINGS HAS BEEN TAKEN  
 AS  $N 29^{\circ} 09' 40'' E$  ALONG THE E OF NORMANDIE  
 PLACE AS SHOWN PER MAP OF T-2141 M.B. 41/8283

This map correctly represents a survey made by me or under my direction in conformance with the requirements of Chapter 15 of Division 3 of the business and professions code at the request of **SHERLOCK HOMES INC.** in SEPTEMBER, 1961.

*Robert L. Taylor*  
 (Signed and Sealed)

RCE No. 10470

This map has been examined for conformance with the requirements of Chapter 15 of Division 3 of the Business and Professions Code this 3rd day of November, 1961.

**A.C. KEITH**  
 County Surveyor

By *C. T. Worsley*  
 Deputy

CITY R/S 622