

IN THE COUNTY OF RIVERSIDE

# RECORD OF SURVEY

Being a survey of a portion of SE 1/4 of Section 22,  
Township 3 South, Range 5 West, S. B. B. & M., Calif.

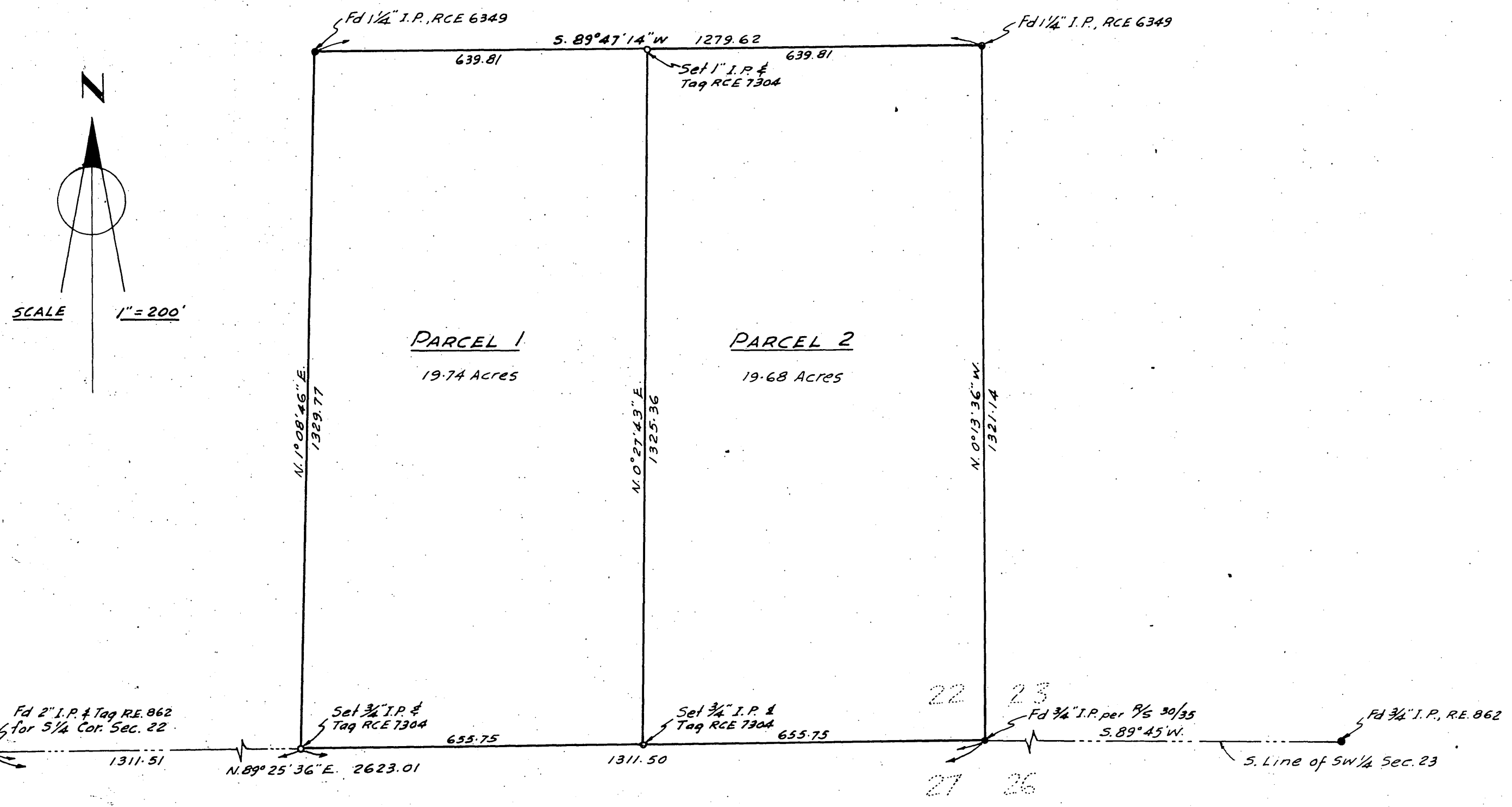
HUGH M. GALLAHER R.E. 7304

FILED FOR RECORD AT REQUEST OF COUNTY SURVEYOR  
THIS 3 DAY OF November 1961 AT 4:30 P.M.  
IN BOOK 35 OF RECORD OF SURVEY AT PAGE 3

FEE \$ 5.00  
NO. 51011

Jack A. Ross  
COUNTY RECORDER  
BY William H. Raleigh  
DEPUTY

RS 35/23 594



THIS MAP CORRECTLY REPRESENTS A SURVEY MADE BY ME OR UNDER MY DIRECTION IN CONFORMANCE WITH THE REQUIREMENTS OF CHAPTER 15 OF DIVISION 3 OF THE BUSINESS AND PROFESSIONS CODE AT THE REQUEST OF HARRY E. ARNOLD OF 3476 WANDA WAY, RIVERSIDE, CALIF., IN OCTOBER, 1961.

Hugh M. Gallaher  
R. E. NO. 7304

THIS MAP HAS BEEN EXAMINED FOR CONFORMANCE WITH THE REQUIREMENTS OF CHAPTER 15 OF DIVISION 3 OF THE BUSINESS AND PROFESSIONS CODE THIS 3<sup>rd</sup> DAY OF November 1961.

A.C. KEITH - COUNTY SURVEYOR  
BY G. T. Worsley  
DEPUTY

### ENGINEER'S NOTES:

- The basis of Bearings shown on this map is the South Line of SW 1/4 of Sec. 23, 5.89° 45' W, as shown on 9/5 30/35, Records of Riverside County.
- Indicates monument found as noted.
- Indicates 3/4" I.P. & Tag RCE 7304 set at corners, unless otherwise noted.