

IN THE CITY OF RIVERSIDE
RECORD OF SURVEY

OF A PORTION OF THE N. E. 1/4 OF THE N. W. 1/4 OF SEC-
TION 20, T. 2 S. R. 4 W., S. B. B. AND M.

MAY 1961

J. F. DAVIDSON, C. E.

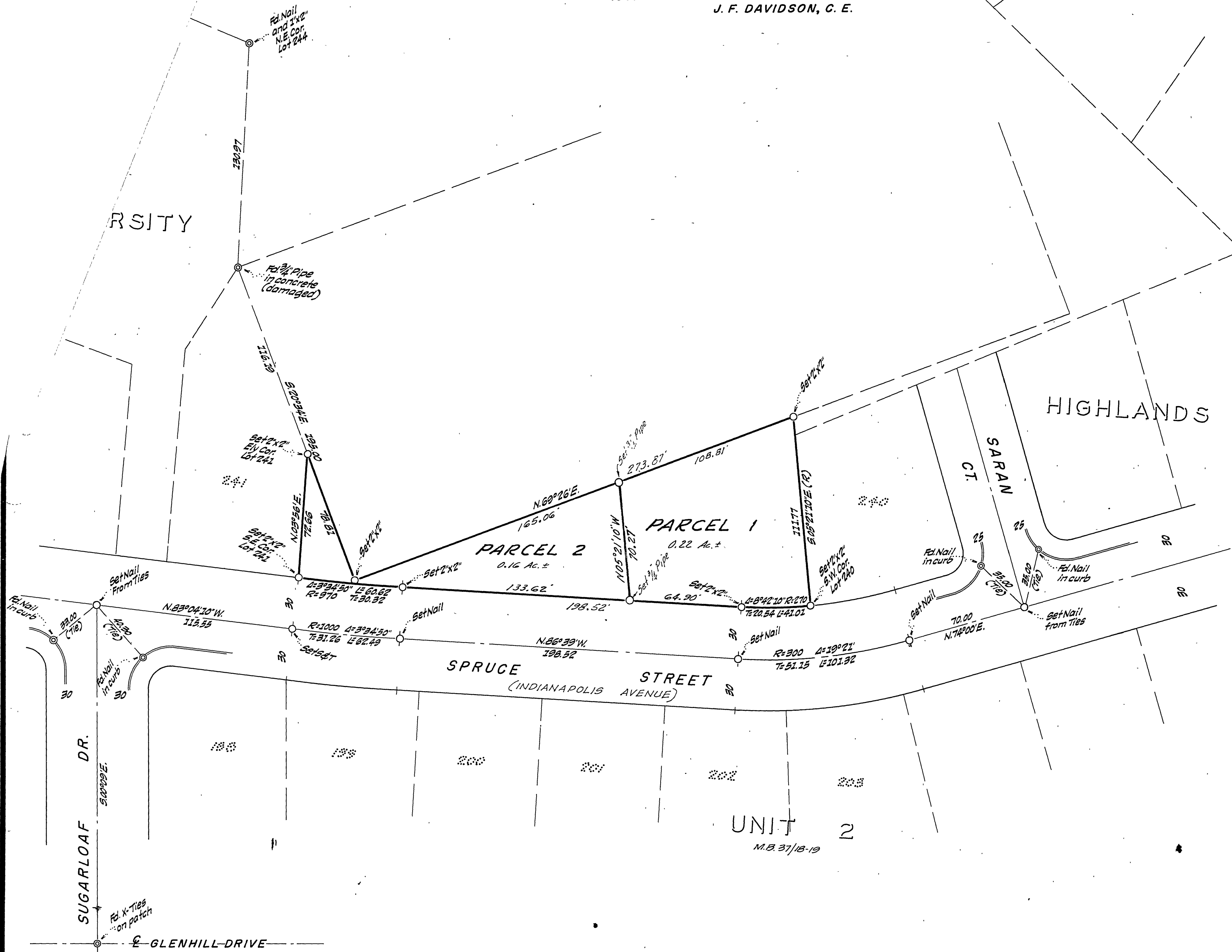
SCALE 1"=40'

Filed for record at the request of County Surveyor
this 3 day of Nov., 1961
at 4:30 P.M. in Book 35 of Record of Survey at Page 15

Fee \$ 5.00 No. 15043

JACK A. ROSS County Recorder

By William R. Balogh Deputy



ENGINEER'S CERTIFICATE

This map correctly represents a survey made by me or under my direction in conformance with the requirements of Chapter 15 of Division 3 of the Business and Professions Code at the request of CITY OF RIVERSIDE in May, 1961.

J. F. Davidson
Registered Civil Engineer No. 862

ENGINEER'S NOTE

Bearings are based on the center line of INDIANAPOLIS AVENUE being N. 86° 39' W. as shown on map of 'UNIVERSITY HIGHLANDS UNIT 2', M.B. 37, Pgs. 18-19, Records of Riverside County, California.

COUNTY SURVEYOR'S CERTIFICATE

This map has been examined for conformance with the requirements of Chapter 15 of Division 3 of the Business and Professions Code this 3rd day of November, 1961.

A. C. KEITH County Surveyor

By G. T. Worley Deputy

5-556 F.B. 680/30

35/25 5-540

RS 35/25

City R/5621