

35/45

IN THE CITY OF RIVERSIDE

RECORD OF SURVEY

OF LOT 7 OF A RESUB. OF A PORTION OF ARLINGTON SUBURBAN EST.
M.B. 13-75, RECORDS OF RIVERSIDE COUNTY, CALIFORNIA

NOVEMBER 1961

J. F. DAVIDSON C.E.

SCALE 1"=60'

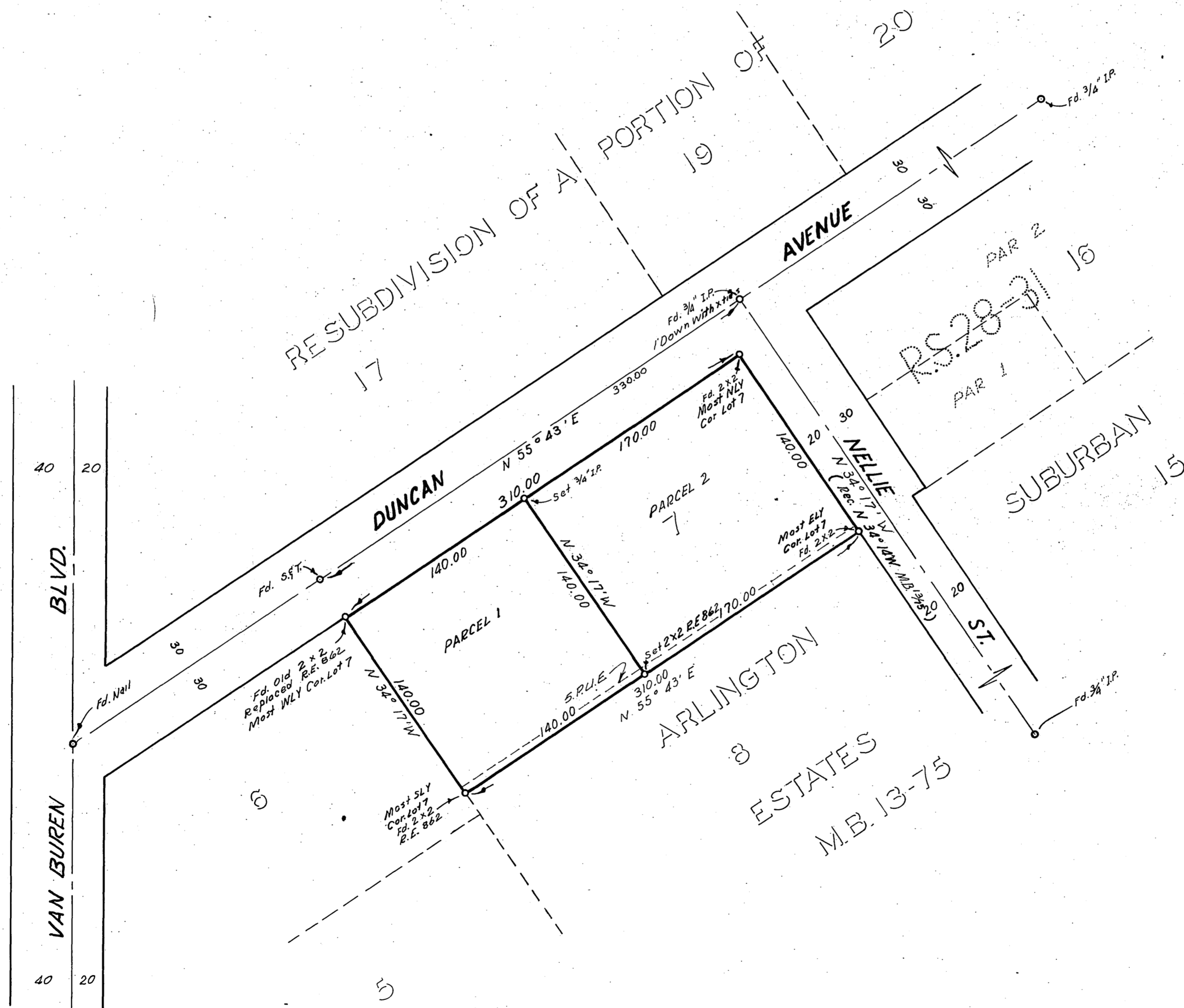
Filed for Record at request of County Surveyor this 7 day of December, 1961 at 3:30 P.M. in Book 35 of Record of Survey of Page 45

Fee \$ 5.00 No. 100000

JACK A. ROSS County Recorder

By William B. Balogh Deputy

MADE AT THE REQUEST OF W.L. PHILLIPS



ENGINEER'S CERTIFICATE

This map correctly represents a survey made by me or under my direction in conformance with the requirements of Chapter 15 of Division 3 of the Business and Professions Code at the request of W. L. Phillips in 1961

J. F. Davidson
Registered Civil Engineer No. 862

ENGINEER'S NOTE

Bearings are based on the center line of DUNCAN STREET as being N 55° 43' E as shown on Map of RESUBDIVISION OF A PORTION OF ARLINGTON SUBURBAN ESTATES, M.B. 13-75, Records of Riverside County, California

COUNTY SURVEYOR'S CERTIFICATE

This map has been examined for conformance with the requirements of Chapter 15 of Division 3 of the Business and Professions Code this 7 day of December, 1961

A.C. KEITH County Surveyor

By G. T. Worsley Deputy

RS 35/45 5572

RS 35/45 5572

RS 35/45 5572