

IN THE CITY OF RIVERSIDE

RECORD OF SURVEY

OF LOT 3 AND A PORTION OF LOT 4, BLOCK 10 OF ARLINGTON HEIGHTS, M. B. 11, PAGES 20 AND 21, RECORDS OF SAN BERNARDINO COUNTY, CALIFORNIA. LOCATED IN T. 3 S. R. 5 W., S. B. B. AND M.

OCTOBER 1961

J. F. DAVIDSON, C. E.

SCALE 1"=100'

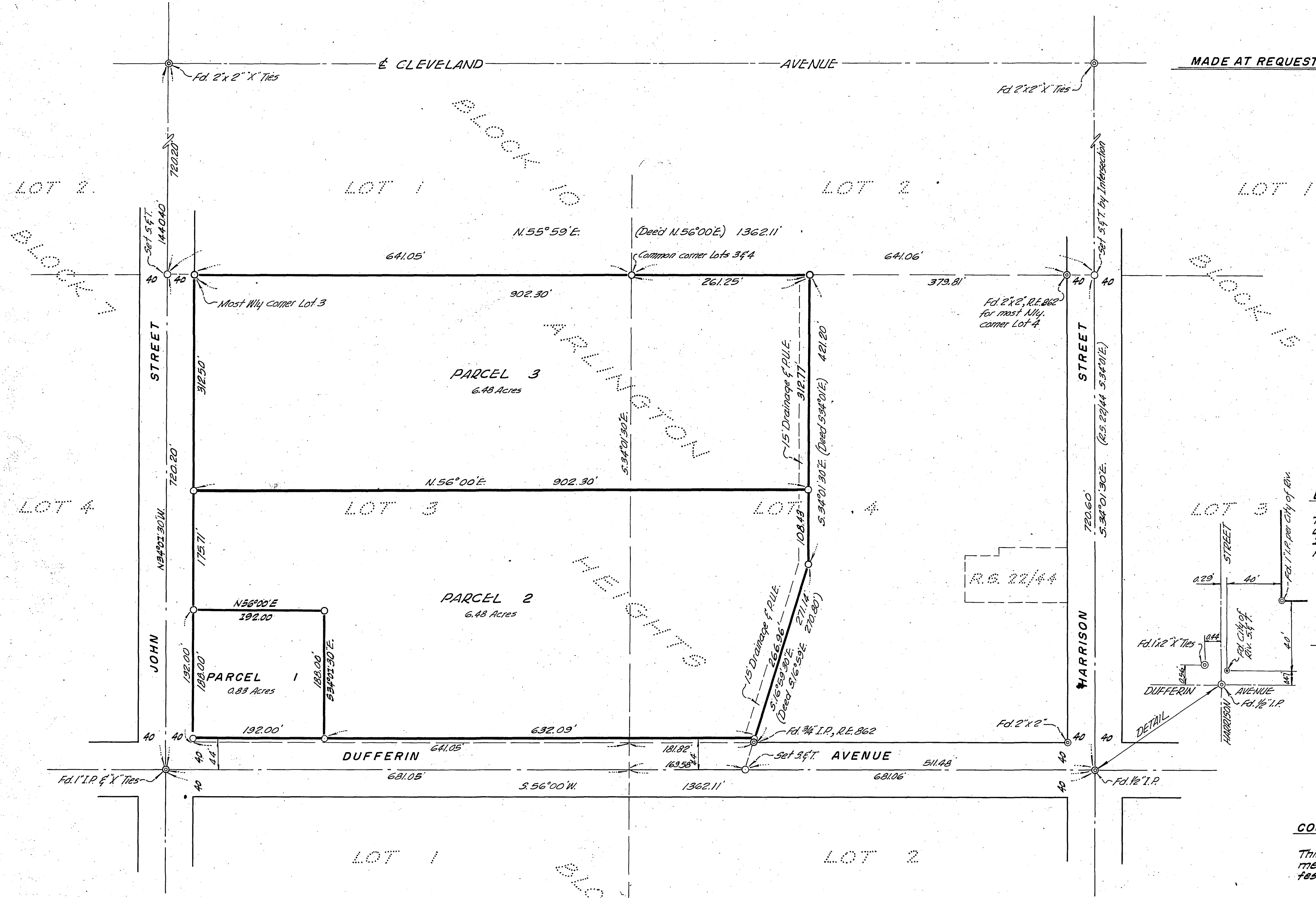
Filed for record at the request of County Surveyor this 20 day of December, 1961 at 10:30 AM in Book 35 of Record of Survey of Page 53

Fee \$5.00

JACK A. ROSS County Recorder

By William D. DeLoja Deputy

MADE AT REQUEST OF WILLIAM H. MAYS



ENGINEER'S CERTIFICATE

This map correctly represents a survey made by me or under my direction in conformance with the requirements of Chapter 15 of Division 3 of the Business and Professions Code at the request of William H. Mays in November, 1961.

J. F. Davidson
Registered Civil Engineer No. 862

ENGINEER'S NOTE

Bearings are based on the center line of Dufferin Avenue being S. 56°00' W. as shown on Record of Survey 22/44, Records of Riverside County, California.

Set 1 1/4" Iron Pipe, tagged R.E. 862, at all points shown thus \circ , unless otherwise noted.

COUNTY SURVEYOR'S CERTIFICATE

This map has been examined for conformance with the requirements of Chapter 15 of Division 3 of the Business and Professions Code this 19th day of December, 1961.

A. C. KEITH County Surveyor

By C. T. Worsley Deputy

RS 35/53

RS 35/53