

RS 35/57 5-544

35/57

IN THE CITY OF RIVERSIDE

RECORD OF SURVEY

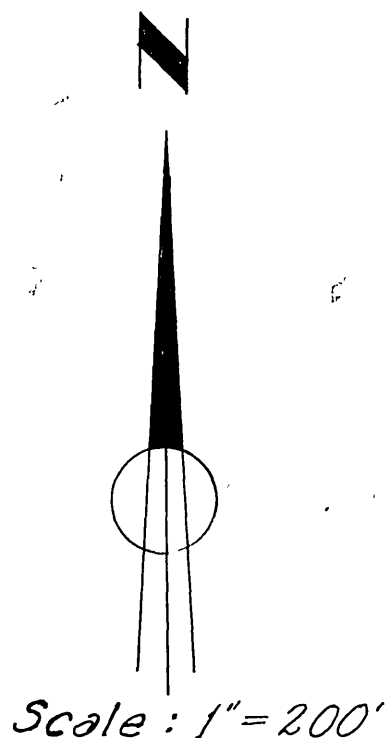
OF A PORTION OF THE E 1/2 OF THE SE 1/4
OF SECTION 1, T.3.S., R.5.W., S.B.B. & M.

BY
ALBERT A. WEBB ASSOCIATES
CIVIL ENGINEERS
SEPT. 1961

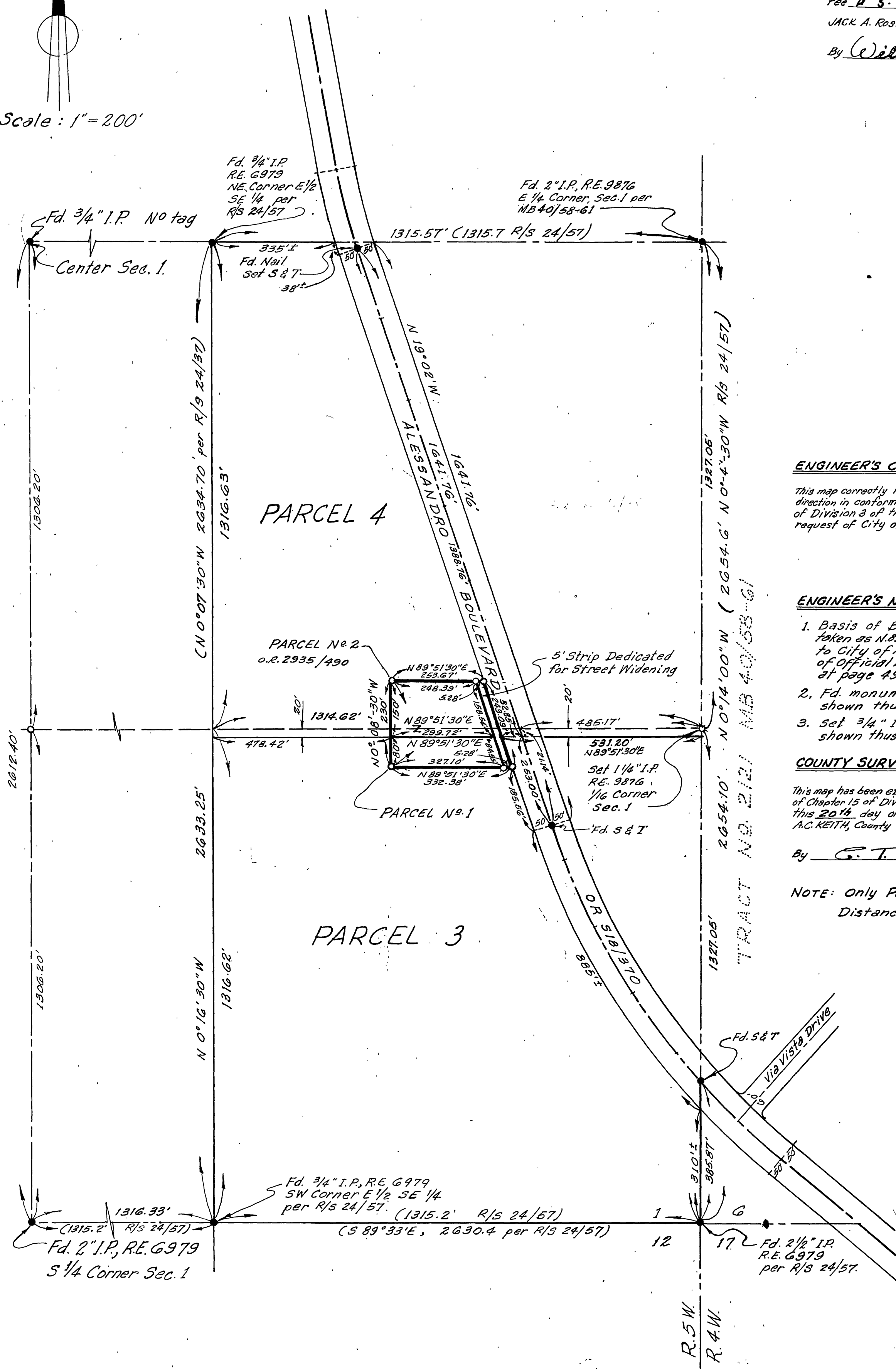
Filed for Record at request of County Surveyor this 20 day of
December, 1961 at 10:50 AM, in Book 35
of Record of Survey at Page 57
Fee \$ 5.00 No.

JACK A. ROSS, County Recorder

By William W. Balogh Deputy



Scale: 1" = 200'



ENGINEER'S CERTIFICATE

This map correctly represents a survey made by me or under my direction in conformance with the requirements of Chapter 15 of Division 3 of the Business and Professions Code at the request of City of Riverside, Public Utilities Dept. Sept. 1961.

Ernest N. Webb
Registered Civil Engineer No. 9876

ENGINEER'S NOTES

1. Basis of Bearing is the North line of PARCEL No. 2, taken as N 89° 51' 30" E, as same is recorded in Deed to City of Riverside filed June 29, 1961 in Book 2935 of Official Records of Riverside County, Calif. at page 490 thereof.
2. Fd. monument as noted at all points shown thus ●
3. Set 3/4" I.P. tagged R.E. 9876 at all points shown thus ○

COUNTY SURVEYOR'S CERTIFICATE

This map has been examined for conformance with the requirements of Chapter 15 of Division 3 of the Business and Professions Code this 20th day of December 1961.
A.C. KEITH, County Surveyor.

By G. T. Wardley Deputy

NOTE: Only Parcels 1 & 2 were surveyed.
Distances shown thus 38'± were scaled.

W.O. 60-242
F.B. 438/14, 364/56

RS 35/57 5-544

CITY R1562