

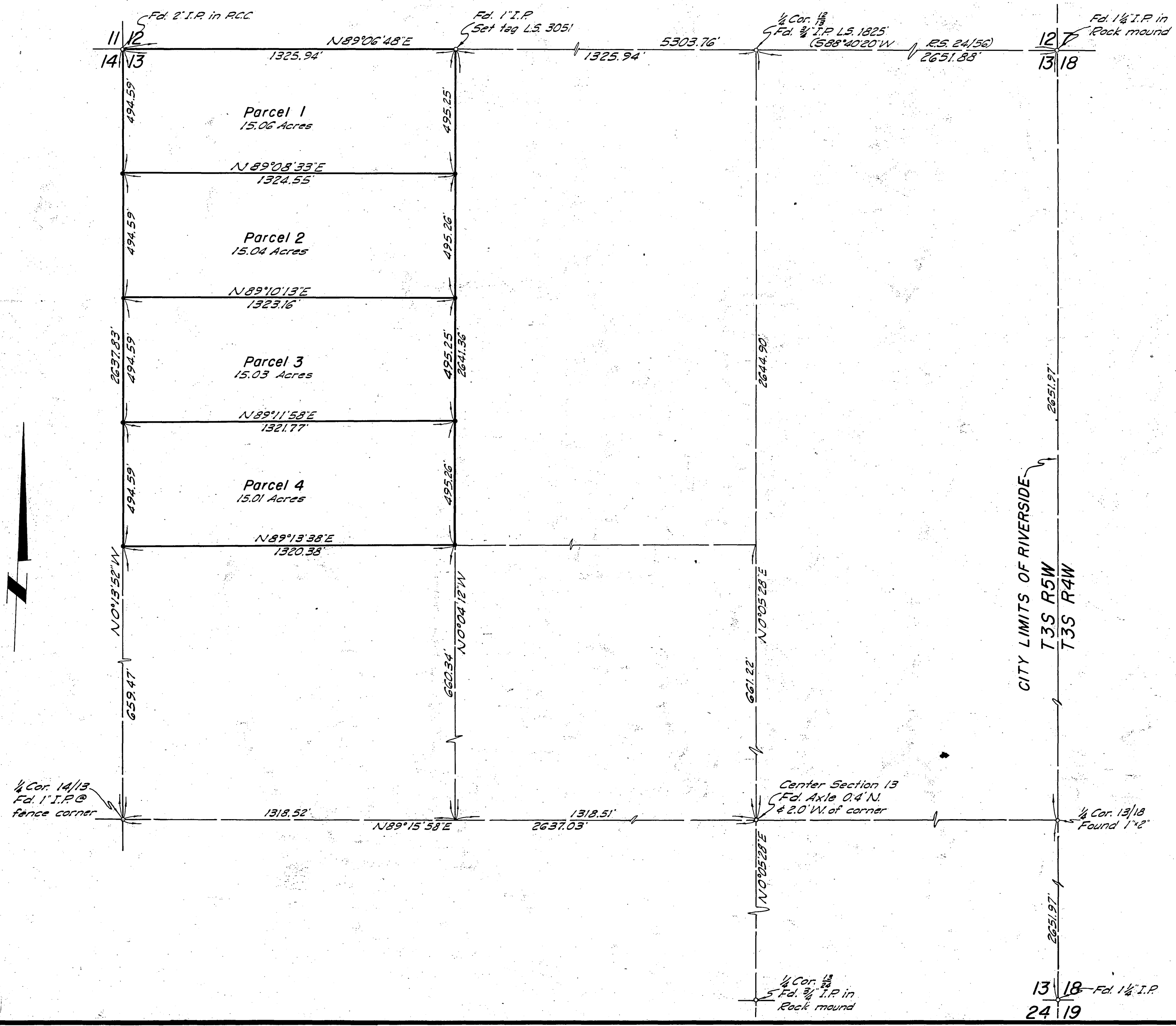
IN THE CITY OF RIVERSIDE RECORD OF SURVEY

OF A PORTION OF THE NORTHWEST ONE-QUARTER OF SECTION 13 T3S R5W S.B.B. & M.

DECEMBER 1961

SCALE 1"=300'

GARNER & TROY - LICENSED LAND SURVEYORS



Filed for record at the request of the County Surveyor this 11 day of JAN 1962 at 3:10 P.M. in book 35 of Record of Survey at page 69.

Fee \$5.00

No. _____

JACK A. ROSS
County Recorder
By Aaron B. Vaughn
Deputy

This map correctly represents a survey made by me or under my direction in conformance with the requirements of Chapter 15 of Division 3 of the Business and Professions Code at the request of Norman E. Lynch in Dec. 1961.

R.H. Garner
Licensed Land Surveyor No. 3035

Bearings are based upon a series of 12 observations taken on Polaris from the North one-quarter corner of Section 13.
Date: December 20, 1961.
Probable error of the mean: 2.4
Instrument: Wild T1-A

Monuments found as noted.

Set 1" I.P. tagged L.S. 3051 at all points shown thus •

This map has been examined for conformance with the requirements of Chapter 15 of Division 3 of the Business and Professions Code this 11th day of Jan 1962.

A.C. Keith
County Surveyor