

IN THE CITY OF RIVERSIDE

RECORD OF SURVEY

OF LOTS 64, 65 AND 66 OF YORKSHIRE HEIGHTS (UNIT NO 3) AS SHOWN ON MAP ON FILE IN MAP BOOK 33, PAGES 9 TO 11, RECORDS OF RIVERSIDE COUNTY, CALIFORNIA, BEING IN T.2S. R.5W., S.B. B. & M. NOVEMBER 1961

J.F. DAVIDSON, CIVIL ENGINEER

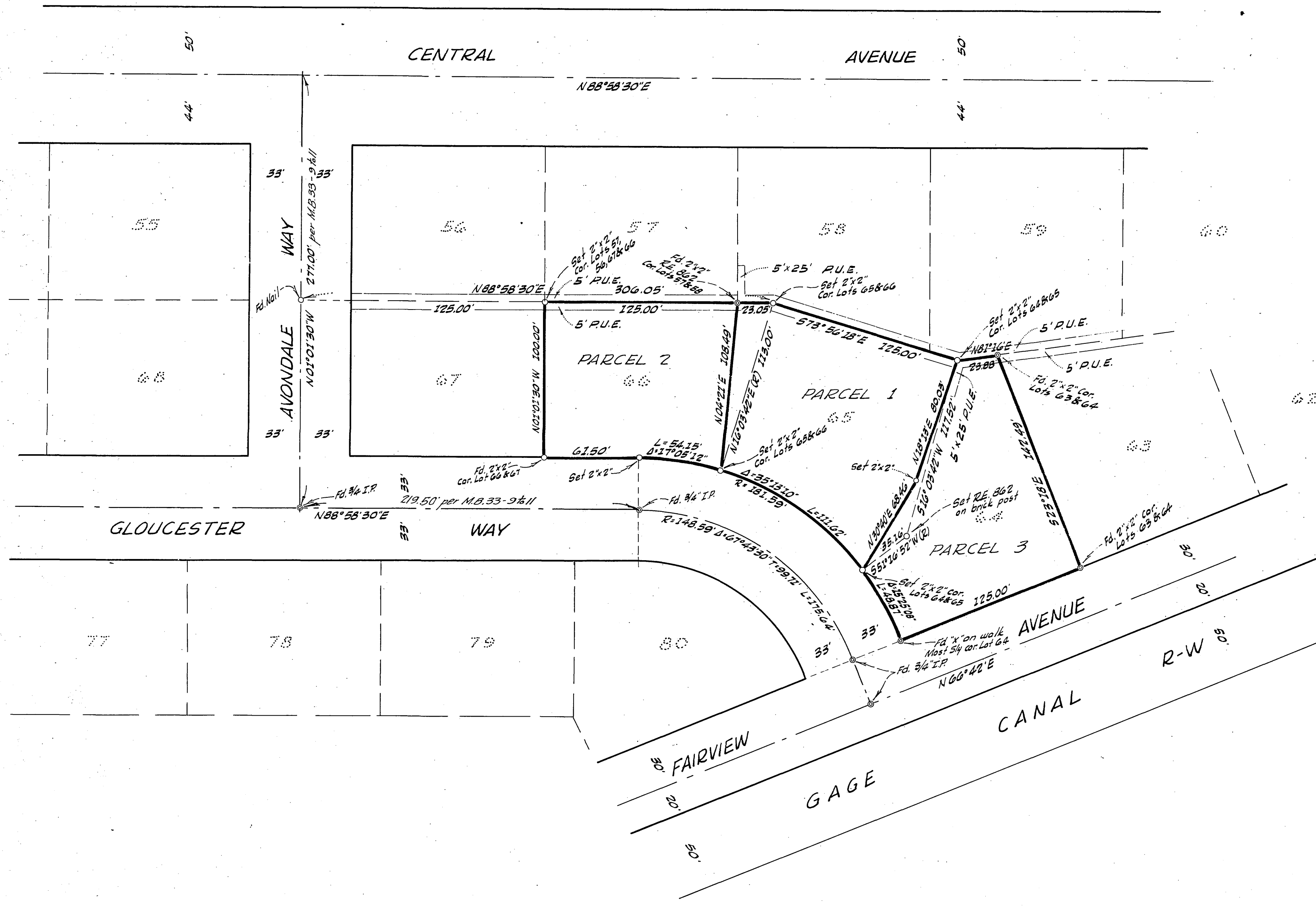
SCALE: 1"=50'

Filed for record at the request of County Surveyor this 1st day of February, 1962 at 3:10 P.M. in Book 35 of Record of Survey at Page 79.

Fee \$ 5.⁰⁰ No. _____

JACK A. ROSS County Recorder

By William D. Balogh deputy



SURVEYED AT THE REQUEST OF
DR. KENNETH C. WEISBROD

ENGINEER'S CERTIFICATE

This map correctly represents a survey made by me or under my direction in conformance with the requirements of Chapter 15 of Division 3 of the Business and Professions Code of the request of Dr. Kenneth C. Weisbrod in November, 1961.

J. F. Davidson
Registered Civil Engineer No. 862

ENGINEER'S NOTE

Bearings are based on the centerline of Gloucester Way bearing N88°58'30"E as shown on map of YORKSHIRE HEIGHTS (unit no 3) on file in Map Book 33 at Pages 9 to 11 Records of Riverside County, California.

COUNTY SURVEYOR'S CERTIFICATE

This map has been examined for conformance with the requirements of Chapter 15 of Division 3 of the Business and Professions Code this 1st day of February, 1962.

A.C. KEITH County Surveyor

By A. C. Keith
F.B. 631-1868 680-66

RS 35/79 5-15-62

RS 35/79 5-15-62