

# IN THE CITY OF RIVERSIDE RECORD OF SURVEY

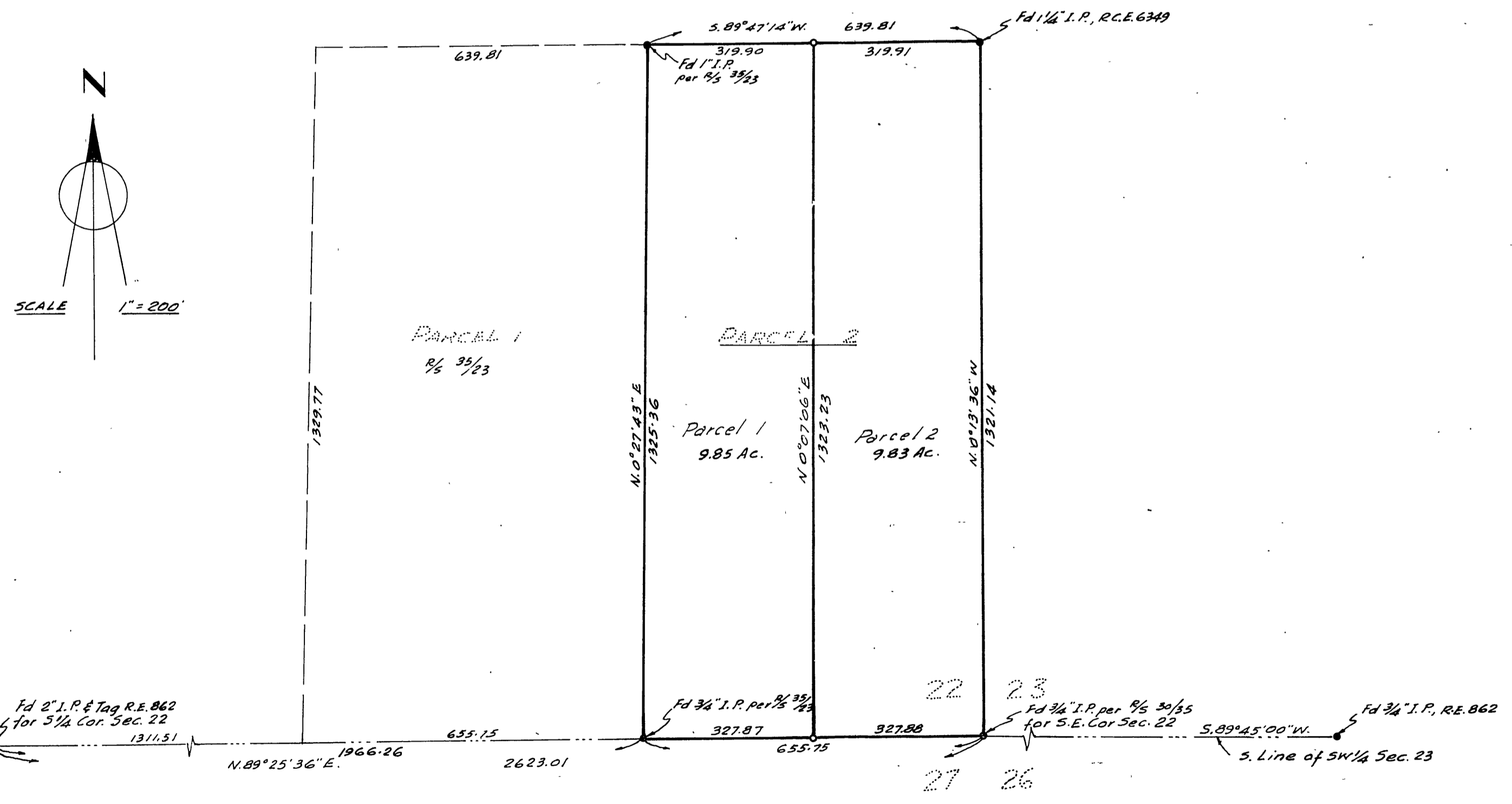
Being a survey of E 1/2 of SE 1/4 of SE 1/4 of Section 22,  
Township 3 South, Range 5 West, S.B.B. & M., Calif.  
HUGH M. GALLAHER R.E. 7304

JANUARY 1962

FILED FOR RECORD AT REQUEST OF COUNTY SURVEYOR  
THIS 1 DAY OF FEB 1962 AT 3:10 P.M.  
IN BOOK 35 OF RECORD OF SURVEY AT PAGE 85

FEE \$ 5.00

JACK A. ROSS  
COUNTY RECORDER  
BY Arnon B. Vaughn  
DEPUTY



THIS MAP CORRECTLY REPRESENTS A SURVEY MADE BY ME OR UNDER MY DIRECTION IN CONFORMANCE WITH THE REQUIREMENTS OF CHAPTER 15 OF DIVISION 3 OF THE BUSINESS AND PROFESSIONS CODE AT THE REQUEST OF HARRY E. ARNOLD OF 3476 WANDA WAY, RIVERSIDE, CALIF., IN JANUARY, 1962.

Hugh M. Gallaher  
R. C. E. NO. 7304

THIS MAP HAS BEEN EXAMINED FOR CONFORMANCE WITH THE REQUIREMENTS OF CHAPTER 15 OF DIVISION 3 OF THE BUSINESS AND PROFESSIONS CODE THIS 1<sup>ST</sup> DAY OF February 1962.

A. C. Keith  
COUNTY SURVEYOR

**ENGINEER'S NOTES:**

- The basis of Bearings shown on this map is the South Line of SW 1/4 of Sec. 23, S. 89° 45' W. as shown on 9/6 30/35, Records of Riverside County.
- Indicates monument found as noted.
- Indicates 3/4" I.P. & Tag RCE 7304 set at corners, unless otherwise noted.