

IN THE CITY OF RIVERSIDE

# RECORD OF SURVEY

OF A PORTION OF THE S. W. 1/4 OF THE N. E. 1/4 OF SECTION 34, T. 2 S. R. 5 W., S. B. B. AND M.

JANUARY 1962

J. F. DAVIDSON, C. E.

SCALE 1" = 50'

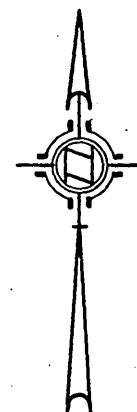
Filed for record at the request of County Surveyor this 14 day of February, 1962 at 10:15 AM in Book 35 of Record of Survey at Page 94

Fee \$ 5.00

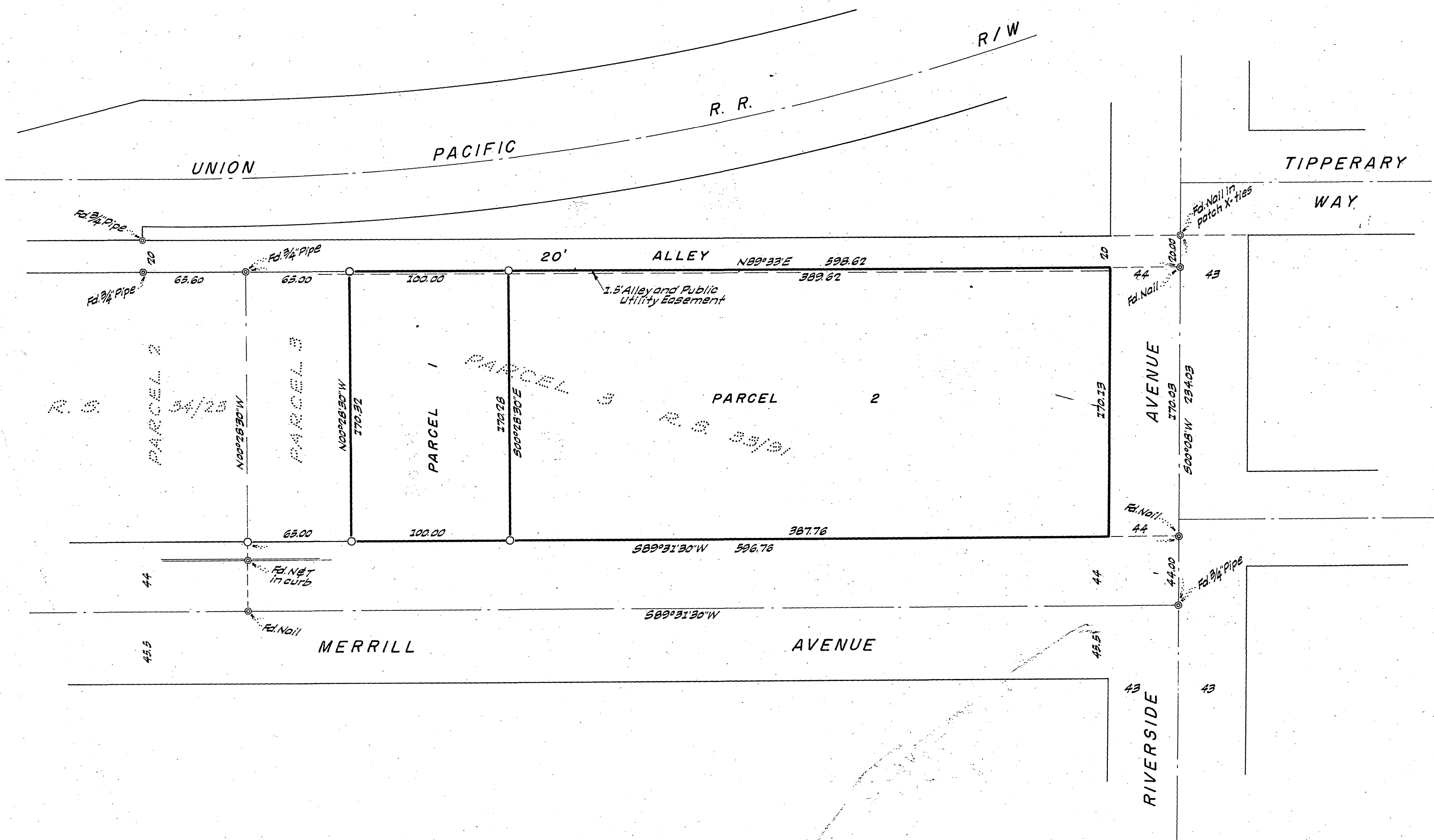
No.

JACK A. ROSS County Recorder

By William W. Dalgleh Deputy



SURVEYED AT THE REQUEST OF WALTER LEWIS



### ENGINEER'S CERTIFICATE

This map correctly represents a survey made by me or under my direction in conformance with the requirements of Chapter 15 of Division 3 of the Business and Professions Code at the request of WALTER LEWIS in January, 1962.

J. F. Davidson  
Registered Civil Engineer No. 862.

### ENGINEER'S NOTE

Bearings are based on the center line of Merrill Avenue, being S89°31'30"W as shown on Record of Survey 33/91, Records of Riverside County, Calif.

○ Indicates 3/4" Pipe tagged R.E. 862 set.

### COUNTY SURVEYOR'S CERTIFICATE

This map has been examined for conformance with the requirements of Chapter 15 of Division 3 of the Business and Professions Code this 13 day of February, 1962.

A. C. KEITH County Surveyor

By A. C. Keith