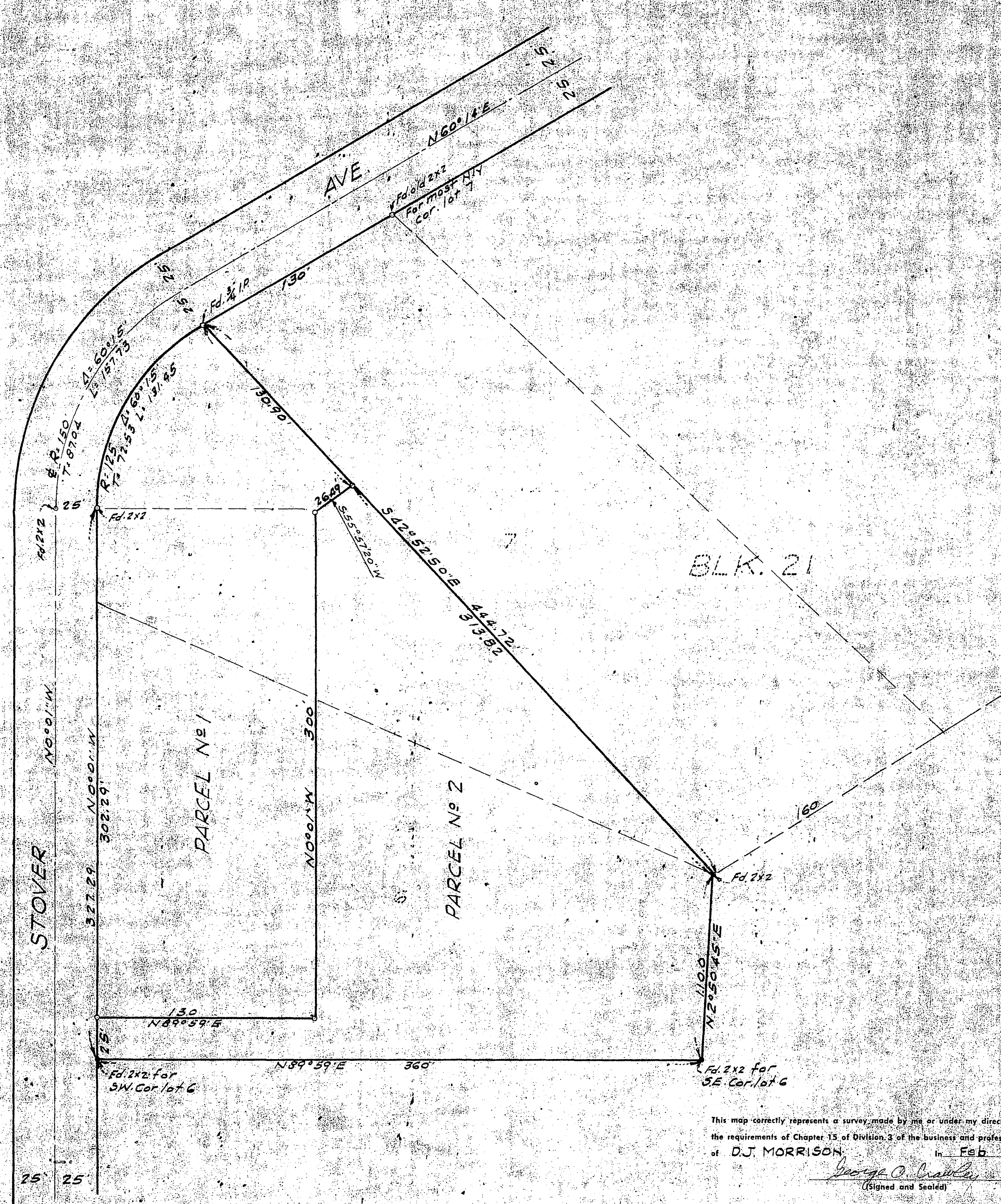


IN THE COUNTY OF RIVERSIDE RECORD OF SURVEY

Filed for record at request of County Surveyor this 26 day of February
1962 at 2:40 P.M. in Book 35 of Record of Survey at Page 98
Fee \$ 8.00
By Jack A. Ross
County Recorder
Deputy Walter B. Belfrage

Located in Section 35 T. 2 S. R. 6 W.
Being a Survey of Lot 6 and a portion of Lot 7 in Block 21
of La Granada as shown by Map on file in Book 12 of Maps
page 49, Records of Riverside County, Calif.

Feb. 1962 - Scale 1 in = 50 ft
McKee and CRAWLEY - Surveyors & Engrs.



BLK. 21

R.S. 35/98

This map correctly represents a survey made by me or under my direction in conformance with the requirements of Chapter 15 of Division 3 of the business and professions code at the request of D.J. MORRISON in Feb 1962
George O. Crawley
(Signed and Sealed)
No. RE 9455

Engineers Note: Bearings are based on the center line of STOVER AVE as shown M.B. 12 pg. 49 Records of Riv. Co Calif.
• Indicates monuments found as shown
• Indicates 2" I.P. set and tagged RE 9455

This map has been examined for conformance with the requirements of Chapter 15 of Division 3 of the Business and Professions Code this 26 day of February 1962
A.C. KEITH
County Surveyor
By G.T. Worsley
Deputy