

IN THE CITY OF RIVERSIDE

RECORD OF SURVEY

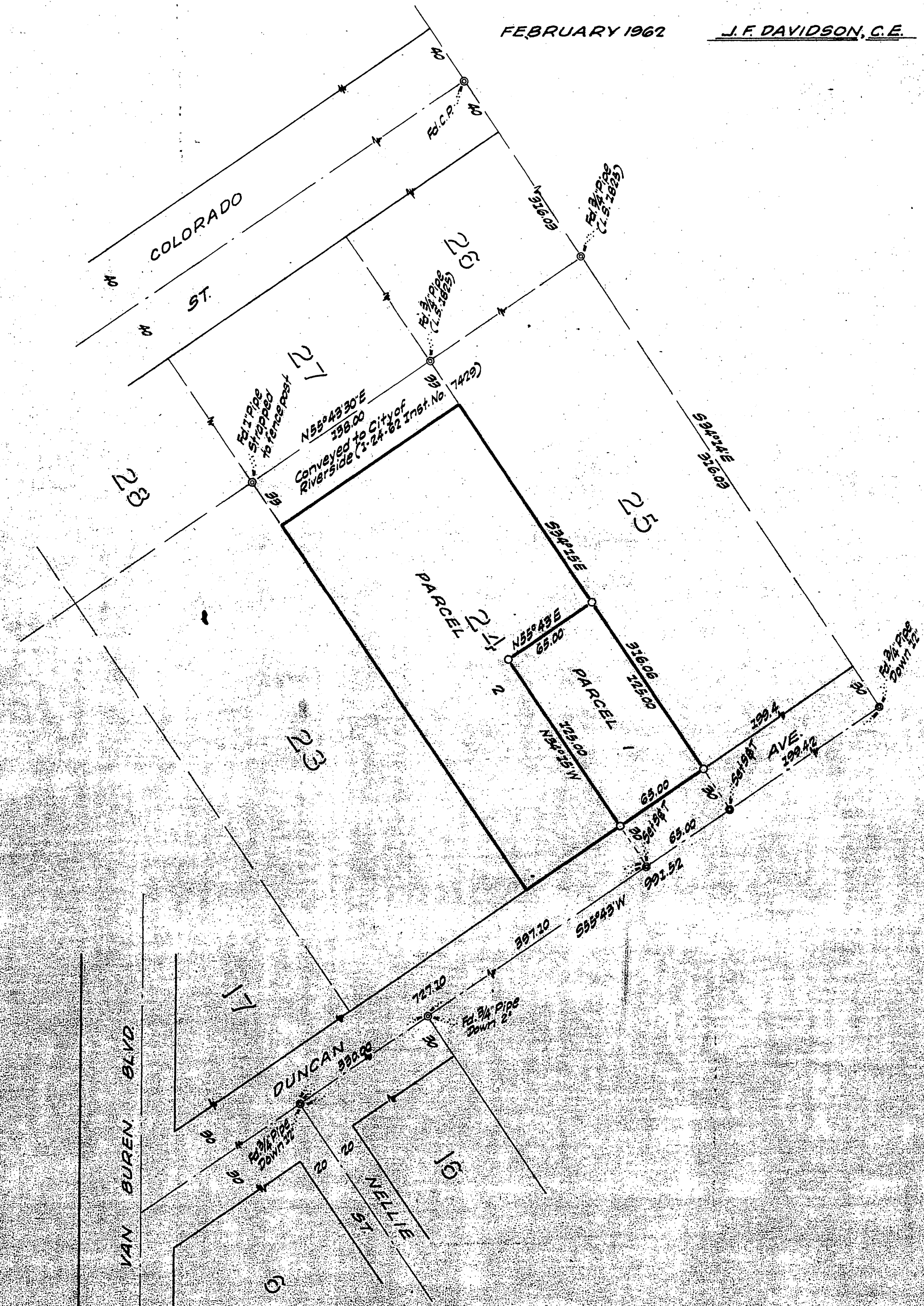
OF A PORTION OF LOT 24 OF RESUBDIVISION OF A PORTION OF ARLINGTON SUBURBAN ESTATES, M. B. 13/75, RECORDS OF RIVERSIDE COUNTY, CALIFORNIA. LOCATED IN T.35. R.5W., S. B. 8. AND M.

FEBRUARY 1962 J.F. DAVIDSON, C.E. SCALE 1" = 60'

Filed for record at the request of County Surveyor this 26 day of February, 1962 at 1:40 P.M. in Book 35 of Record of Survey at Page 99.

Fee \$ 5.00 No. JACK A. ROSS County Recorder

By *William D. Balogh* Deputy



SURVEYED AT THE REQUEST OF HOWARD VALK

ENGINEER'S CERTIFICATE

This map correctly represents a survey made by me or under my direction in conformance with the requirements of Chapter 15 of Division 3 of the Business and Professions Code at the request of HOWARD VALK in February, 1962.

J. F. Davidson
Registered Civil Engineer No. 662

ENGINEER'S NOTE

Bearings are based on the center line of DUNCAN AVE., being S95°43' was shown on map of ARLINGTON SUBURBAN ESTS., M. B. 13/75, Records of Riverside County, Calif.

o. Indicates 2 1/2" Pipe tagged R.E. 862 set.

COUNTY SURVEYOR'S CERTIFICATE

This map has been examined for conformance with the requirements of Chapter 15 of Division 3 of the Business and Professions Code this 26 day of February, 1962.

A. C. KEITH County Surveyor
By *C. T. Ulansey* Deputy
FB 35/99