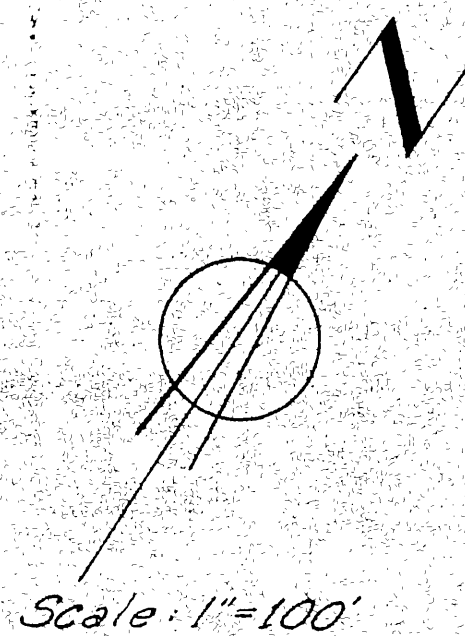


IN THE CITY OF RIVERSIDE RECORD OF SURVEY

OF SOUTHWESTERLY 212.85 FEET OF LOTS 3, 4, 5 AND 6 OF WRIGHT ACRES AS SHOWN BY MAP RECORDED IN BOOK 16 OF MAPS, PAGE 15, RECORDS OF RIVERSIDE COUNTY, CALIFORNIA.

BY
ALBERT A. WEBB ASSOCIATES
CIVIL ENGINEERS
RIVERSIDE, CALIFORNIA
DECEMBER, 1961

Filed for Record at request of County Surveyor this 26 day of February, 1962 at Riverside, Cal. in Book 36 of Record of Survey at Page 2
Fee \$ 5.00 No. _____
JACK A. ROSS County Recorder
By William W. DeLoach Deputy



Scale: 1"=100'

HESS ARLINGTON HEIGHTS TRACT
MB. 14/42

WRIGHT ACRES
MB. 16/15
Fd. broken 2"x2" Resol. 3/4" Iron Pipe tagged RE 9876

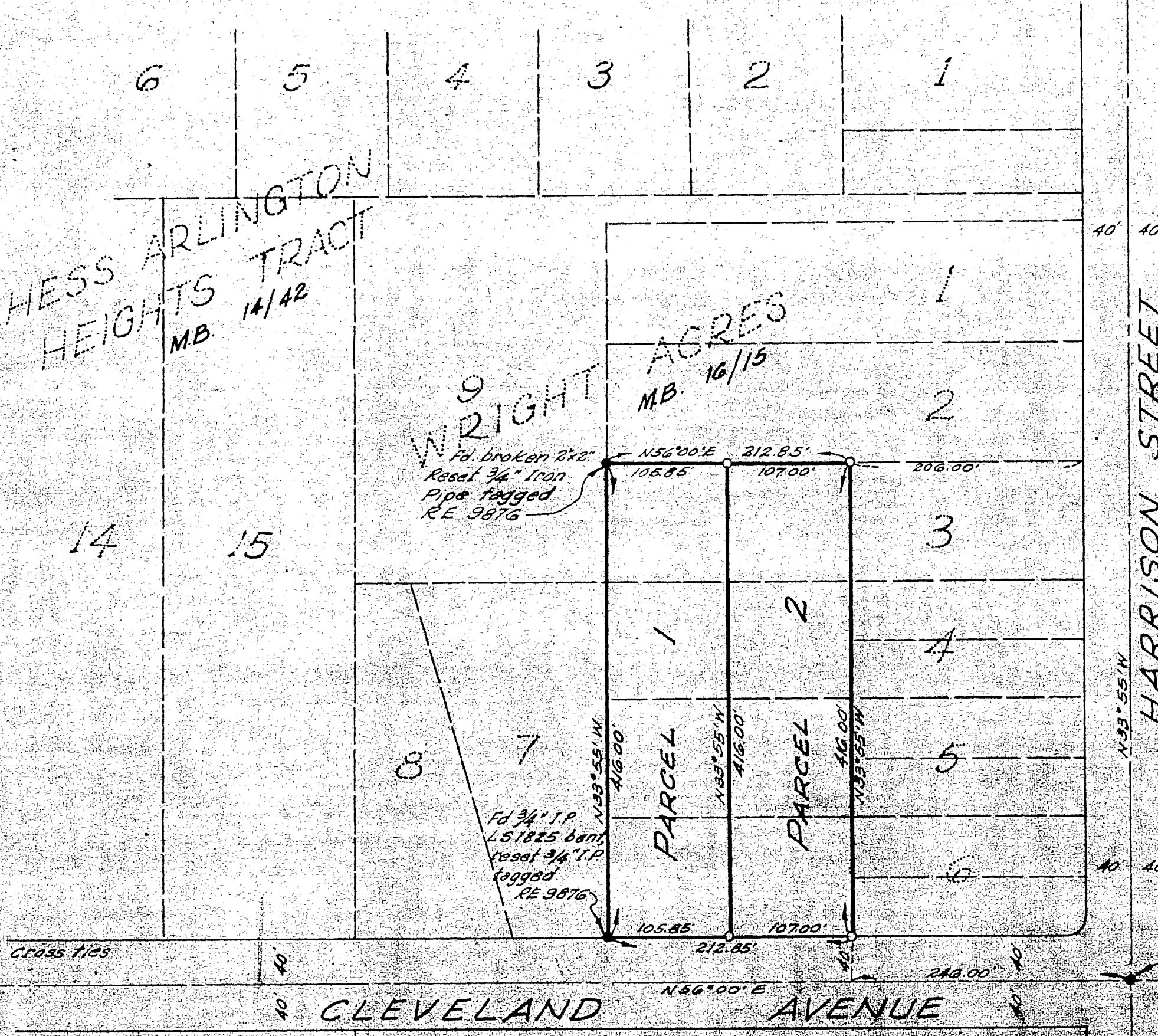
Fd. 3/4" I.P. 2.51825 bars Resol. 3/4" I.P. tagged RE 9876

Fd. capped monument
VICTORIA AVE.

HARRISON STREET

JOHN STREET

CLEVELAND AVENUE



ENGINEER'S CERTIFICATE

This map correctly represents a survey made by me or under my direction in conformance with the requirements of Chapter 15 of Division 3 of the Business and Profession Code of the request of MARTIN C. SCHOW during December 1961

Albert A. Webb
Registered Civil Engineer No. 3876

ENGINEER'S NOTE:

Basis of Bearings is the center line of Cleveland Avenue taken as N56°00'E as shown by map of Wright Acres recorded in Book 16 of Maps at Page 15 thereof, Records of Riverside County, California.

Found monuments as noted at all points shown thus ●

Set 3/4" Iron Pipe tagged RE 9876 at all points shown thus ○

COUNTY SURVEYOR'S CERTIFICATE

This map has been examined for conformance with the requirements of Chapter 15 of Division 3 of the Business and Profession Code this 26 day of February.

A. C. KEITH County Surveyor
By G. T. Worsley Deputy