

IN THE CITY AND COUNTY OF RIVERSIDE

RECORD OF SURVEY

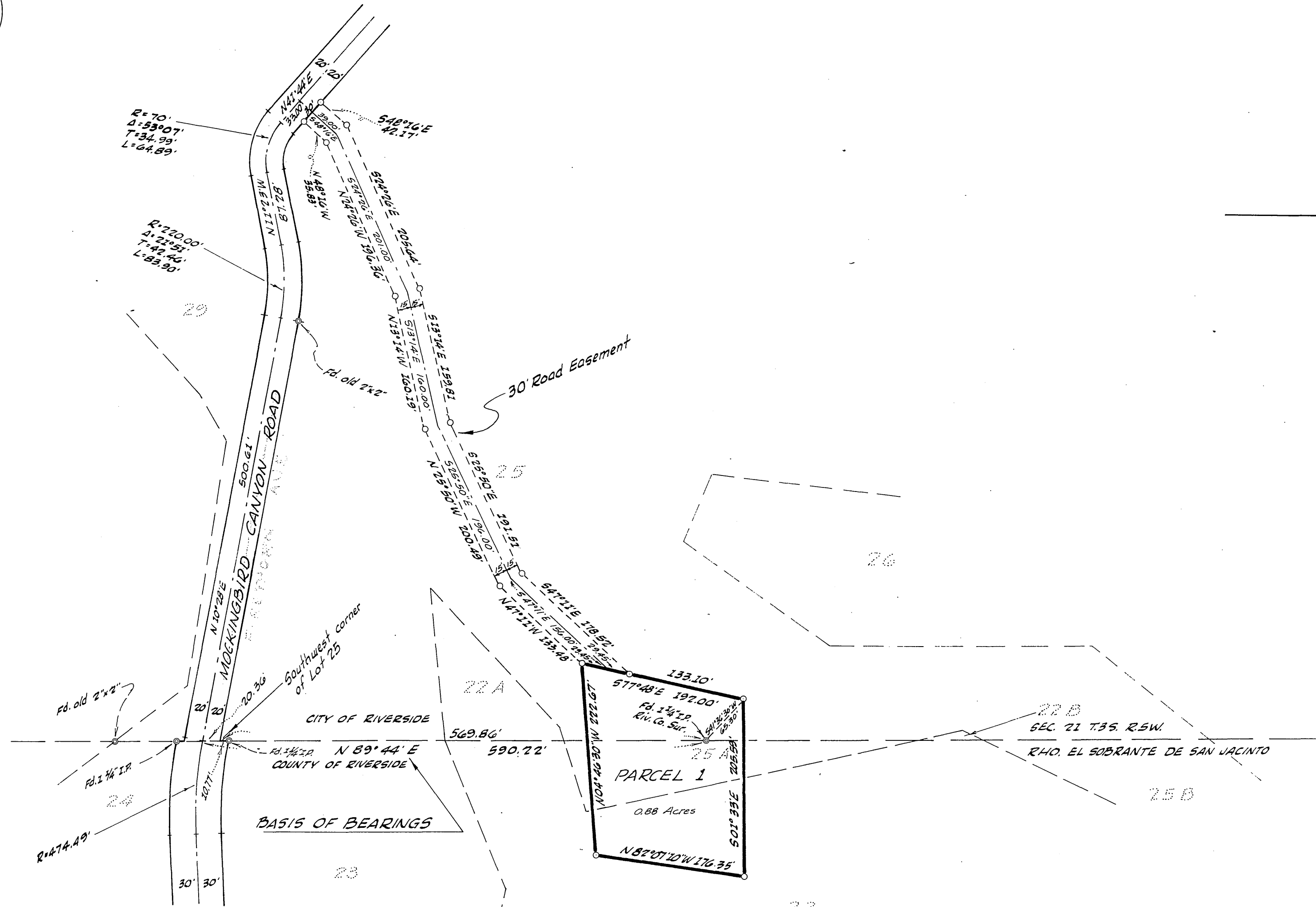
OF A PORTION OF LOTS 22, 25A AND 25 OF WINDSOR HEIGHTS AS SHOWN IN MAP BOOK 12, PAGES 8 TO 10, RECORDS OF RIVERSIDE COUNTY, CALIFORNIA LOCATED IN T.3S. R.5W, S.B. & M. AND IN RANCHO EL SOBRANTE DE SAN JACINTO MARCH 1962

J.F. DAVIDSON, CIVIL ENGINEER

Filed for record at the request of County Surveyor this 5 day of April, 1962 at 4:35 P.M. in Book 36 of Record of Survey at Page 42

Fee \$ 5.00 No. 1000 JACK A. ROSS County Recorder

By William H. Balogh Deputy



SURVEYED AT THE REQUEST OF ALVIN J. NIELSEN

ENGINEER'S CERTIFICATE

This map correctly represents a survey made by me or under my direction in conformance with the requirements of Chapter 15 of Division 3 of the Business and Professions Code at the request of Alvin J. Nielsen in March, 1962.

J. F. Davidson
Registered Civil Engineer No. 862

ENGINEER'S NOTE

—○— Indicates 1 1/4" Iron Pipe, tagged R.E. 862, set unless otherwise noted.

Bearings are based on the South line of Section 21 as shown on Map of Windsor Heights, M.B. 12 pgs. 8 to 10, Records of Riverside County, California.

COUNTY SURVEYOR'S CERTIFICATE

This map has been examined for conformance with the requirements of Chapter 15 of Division 3 of the Business and Professions Code this 3rd day of April, 1962.

A.C. KEITH County Surveyor

By G. T. Worley Deputy
F.B. 727 - 768-79

RS 36/42

RS 36/42