

36/61

S-703

RS 36/61

City R.S. 630

IN THE CITY OF RIVERSIDE
RECORD OF SURVEY

OF LOTS 33 AND 34 OF VICTORIA HILLS UNIT 2, M.B. 38, PAGES 17, 18 & 19, RECORDS
 OF RIVERSIDE COUNTY, CALIFORNIA, IN SECTION 36, T.2 S. R.5 W., S. B. B. AND M.

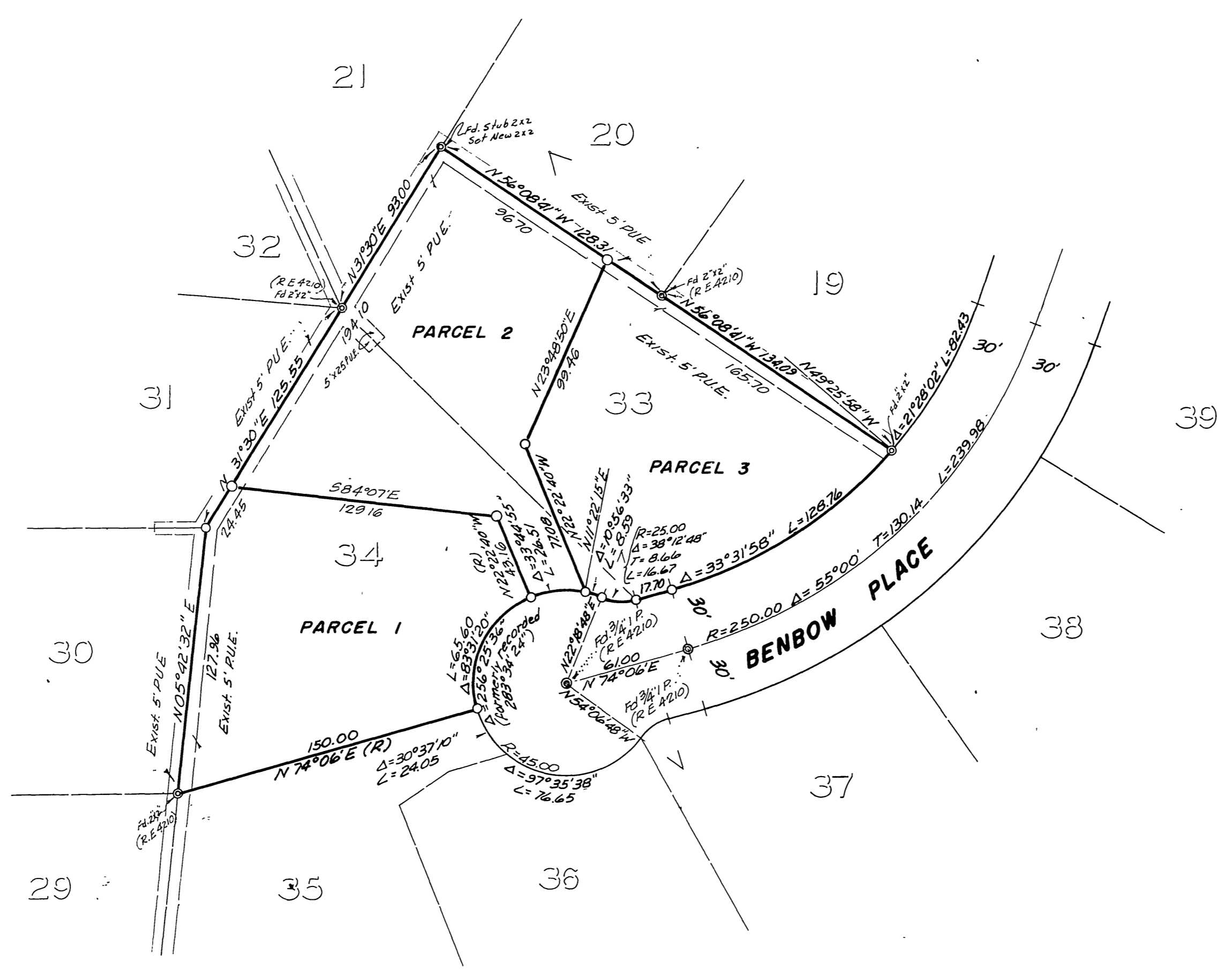
SEPTEMBER 1961 J.F. DAVIDSON C.E. SCALE 1" = 50'

Filed for record at the request of County Surveyor
 this 27 day of April, 1962
 at 1:33 P.M. in Book 36 of Record of Survey at Page
 61.

Fee \$ 5.00 No. 111111
 JACK A. ROSS County Recorder

By William H. Falgh Deputy

MADE AT THE REQUEST OF VICTORIA HILLS INC



ENGINEER'S CERTIFICATE

This map correctly represents a survey made by me or under my direction in conformance with the requirements of Chapter 35 of Division 3 of the Business and Professions Code at the request of Victoria Hills Inc. in September, 1961 and April 1962.

J. F. Davidson
 Registered Civil Engineer No. 862

ENGINEER'S NOTE

- Bearings are based on the Northeasterly line of Lot 33 as being N 36° 08' 41" W as shown on Map of Victoria Hills Unit 2, M.B. 38, Pgs. 17, 18, & 19.
- indicates 2"x2" tagged R.E. 862 set.
 - ⊙ indicates points found as noted.

COUNTY SURVEYOR'S CERTIFICATE

This map has been examined for conformance with the requirements of Chapter 35 of Division 3 of the Business and Professions Code this 27th day of April, 1962.

A.C. KEITH County Surveyor
 By G. T. Worsley Deputy

RS 36/61

RS 36/61

S-703