

IN THE CITY OF RIVERSIDE RECORD OF SURVEY

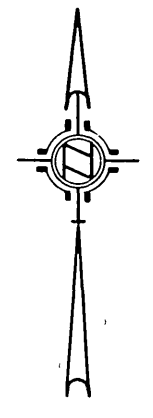
OF A PORTION OF THE S. E. 1/4 OF N. E. 1/4 OF SECTION 24, T. 2 S. R. 5 W.,
S. B. B. AND M.

FEBRUARY 1962 J. F. DAVIDSON, C. E. SCALE 1" = 200'

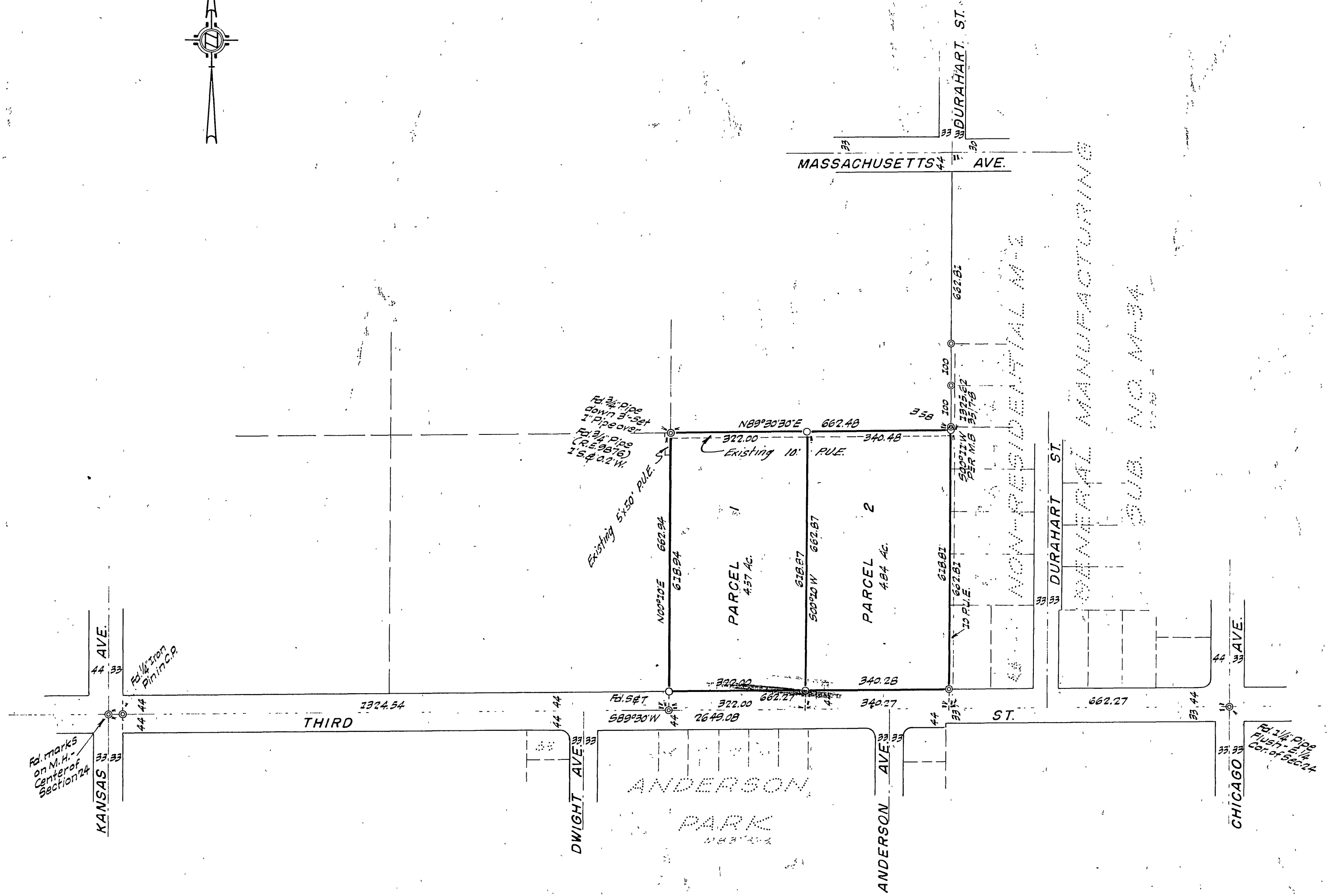
Filed for record at the request of County Surveyor
this 3rd day of MAY, 1962
at 1:55 P.M. in Book 36 of Record of Survey at Page
63

Fee \$5.00 No. _____
JACK A. ROSS County Recorder

By Ramon B. Vaughn Deputy



SURVEYED AT REQUEST OF JOHN E. COTE



ENGINEER'S CERTIFICATE

This map correctly represents a survey made by me or under my direction in conformance with the requirements of Chapter 15 of Division 3 of the Business and Professions Code at the request of JOHN E. COTE in February, 1962.

J. F. Davidson
Registered Civil Engineer No. 862.

ENGINEER'S NOTE

Bearings are based on the center line of Third St., being 589°20'W as shown on map of 'Non-Residential M-2 General Manufacturing Sub. No. M-34', Map Book 35, Pgs. 7-B, Records of Riverside Co., Calif.

- Indicates 1" Pipe tagged R.E. 862 set.
- Indicates 3/4" Pipe found unless noted otherwise.

COUNTY SURVEYOR'S CERTIFICATE

This map has been examined for conformance with the requirements of Chapter 15 of Division 3 of the Business and Professions Code this 2nd day of MAY, 1962.

A. C. KEITH County Surveyor

By C. T. Worsley Deputy