

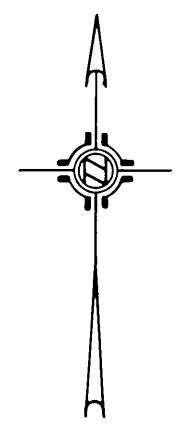
36/77
R/S 36/77

IN THE CITY OF RIVERSIDE

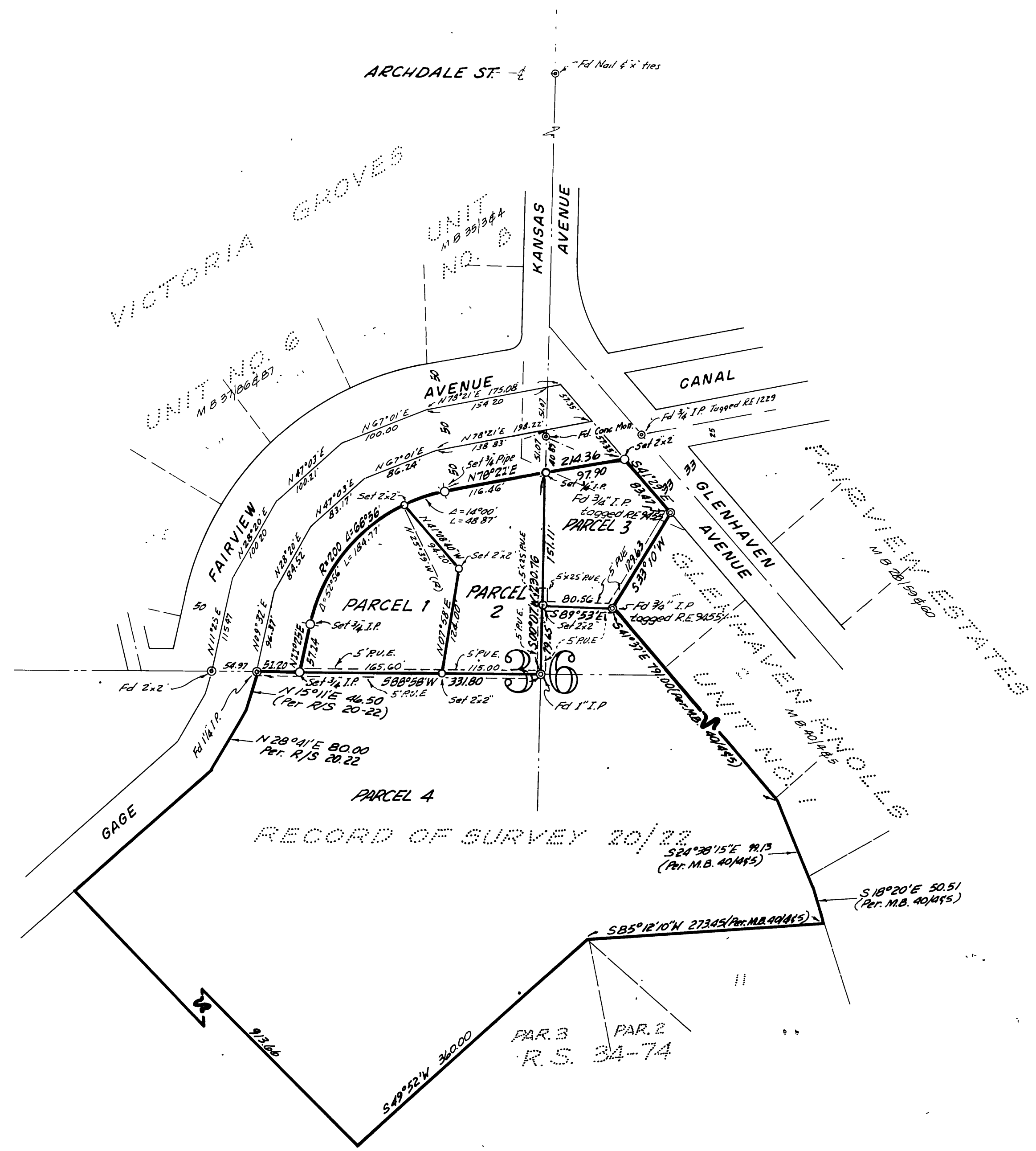
RECORD OF SURVEY

OF PORTIONS OF THE N. E. 1/4 AND THE S. 1/2 OF SECTION 36, T. 2 S., R. 5 W., S. B. B. AND M., AND A PORTION OF LOT 18 OF VICTORIA RANCH, MAP BOOK 4/59, REC. RIV. CO. CALIF.
JULY 1961 J. F. DAVIDSON, C. E. SCALE 1"=100'

Filed for Record at request of County Surveyor this 11 day of May, 1962 at 11:00 A.M. in Book 36 of Record of Survey of Page 77
Fee \$ 5.00 No. _____
JACK A. ROSS County Recorder
By William W. Balg Secy.



SURVEYED AT THE REQUEST OF JACK M. BRYANT - PARCELS 1 & 2 AND VICTORIA KNOLLS INC. PARCELS 3 & 4



ENGINEER'S CERTIFICATE

This map correctly represents a survey made by me or under my direction in conformance with the requirements of Chapter 15 of Division 3 of the Business and Professions Code at the request of Jack M. Bryant & Victoria Knolls Inc. in July, 1961.

J. F. Davidson
Registered Civil Engineer No. 862

ENGINEER'S NOTE

Bearings are based on the east line of S E 1/4 of the NW 1/4 of Section 36, T 2 S R 5 W, S B B & M being 500'± W as shown on R/S 20/22, Records of Riverside County, Calif.
Bearings and Distances on Parcel 5 and Gage Canal R/W are from existing records and not field measurements.
O Indicates 2"x2" Stake, painted yellow and tagged RE 862, set, unless otherwise noted.

COUNTY SURVEYOR'S CERTIFICATE

This map has been examined for conformance with the requirements of Chapter 15 of Division 3 of the Business and Professions Code this 11 day of May, 1962.
A C KEITH County Surveyor

By A. C. Keith

1 R.S. 36/77

R/S 36/77