

IN THE CITY OF RIVERSIDE

# RECORD OF SURVEY

OF A PORTION OF BLOCKS 71 AND 87 OF SAYWARD AND EVANS TRACT AS SHOWN  
IN MAP BOOK 3, PAGE 2, RECORDS OF SAN BERNARDINO COUNTY, CALIFORNIA  
LOCATED IN T.35. R.5W. S.B. 8&M.  
MAY 1962

J.F. DAVIDSON, CIVIL ENGINEER

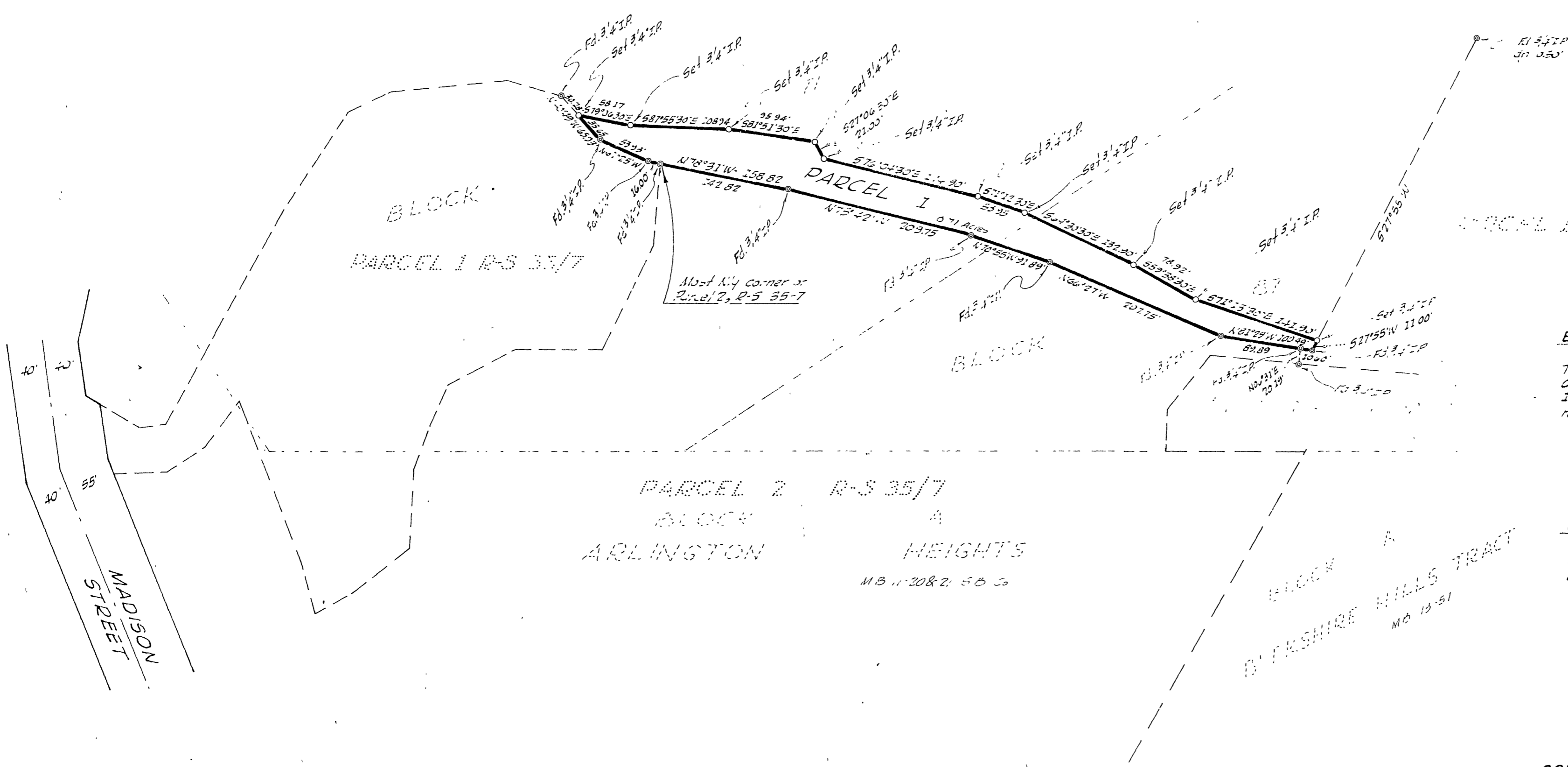
SCALE 1"=100'

Filed for record at the request of County Surveyor  
this 4 day of June, 1962  
at 11:30 P.M. in Book 37 of Record of Survey or Page

Fee \$ 5.<sup>00</sup> No. \_\_\_\_\_  
JACK A. ROSS County Recorder

By William D. Smith Deputy

SURVEYED AT THE REQUEST OF  
AV JESTER



### ENGINEER'S CERTIFICATE

This map correctly represents a survey made by me or under my direction in conformance with the requirements of Chapter 15 of Division 3 of the Business and Professions Code at the request of AV Jester in May, 1962.

J. F. Davidson  
Licensed Land Surveyor No. 3018

### ENGINEER'S NOTE

Bearings are based on the Northerly line of Parcel 2 of R-5 35-7 Records of Riverside County, Calif.  
3/4" Iron Pipe target RE 562 Set at an angle since this

### COUNTY SURVEYOR'S CERTIFICATE

This map has been examined for conformance with the requirements of Chapter 15 of Division 3 of the Business and Professions Code this 31st day of May, 1962.

A. C. KEITH County Surveyor

By C. T. Wordley Deputy  
FB 739-77