

IN THE CITY OF RIVERSIDE

RECORD OF SURVEY

OF A PORTION OF LOTS 3 AND 4, BLOCK 66, OF ARLINGTON HEIGHTS, M. B. 11, PAGE 20 AND 21, RECORDS OF SAN BERNARDINO COUNTY, CALIF. LOCATED IN T. 3 S. R. 5 W., S. B. B. AND M.

OCTOBER 1961

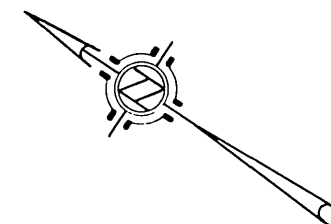
J. F. DAVIDSON, C. E.

SCALE 1"=200'

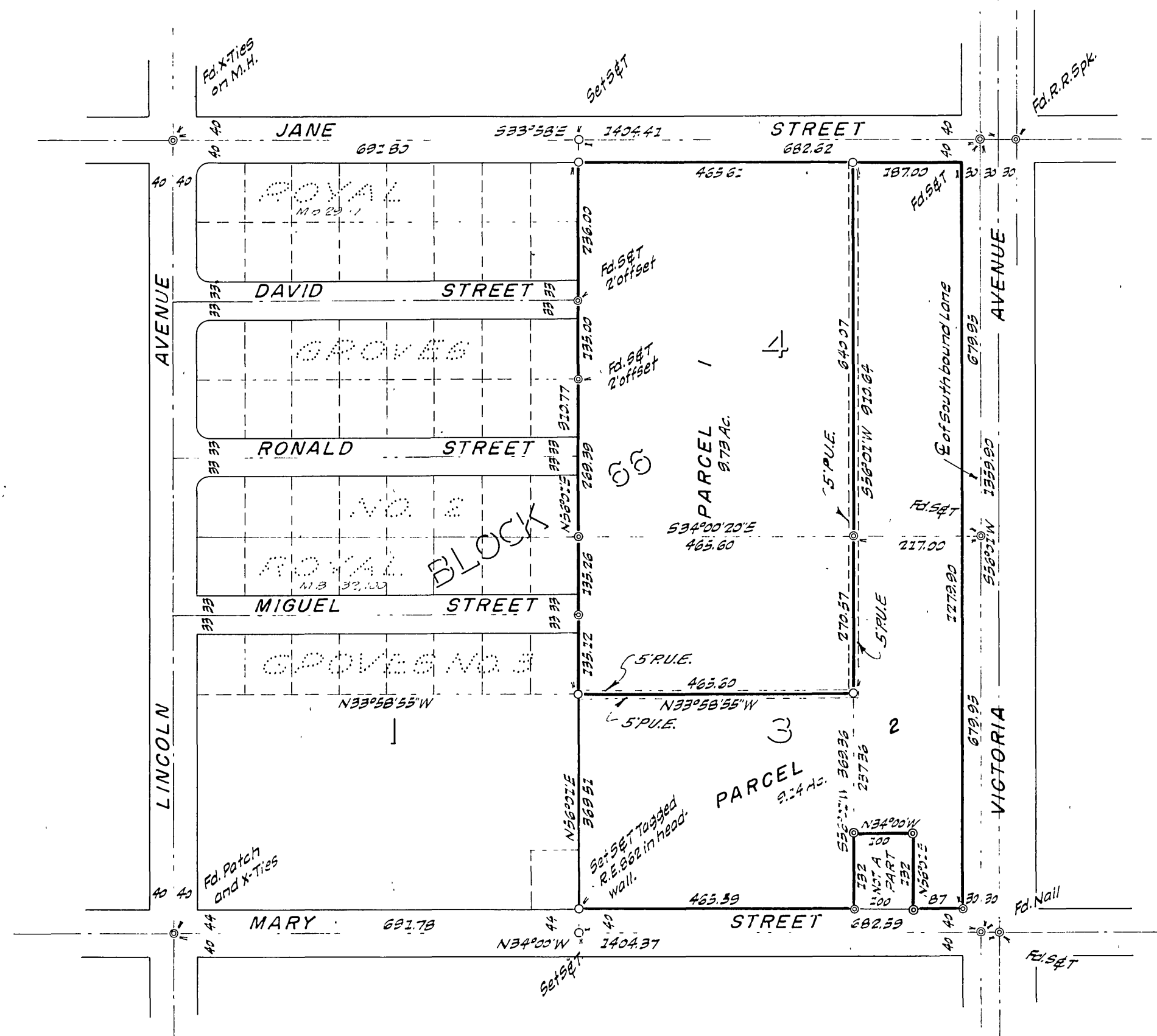
Filed for record at the request of County Surveyor this 7 day of June, 1962 at 12:35 P.M. in Book 37 of Record of Survey at Page 2

Fee None No. _____
JACK A ROSS County Recorder

By William W. DeLoach Deputy



SURVEYED AT REQUEST OF RIVERSIDE CITY SCHOOL DISTRICT



ENGINEER'S CERTIFICATE

This map correctly represents a survey made by me or under my direction in conformance with the requirements of Chapter 15 of Division 3 of the Business and Professions Code at the request of RIVERSIDE CITY SCHOOL DIST. in October, 1961.

J. F. Davidson
Registered Civil Engineer No. 862.

ENGINEER'S NOTE

Bearings are based on the center line of Mary Street being N34°20' W. as shown on map of Arlington Heights, Map Book 11, Pages 20 and 21, Records of San Bernardino County, Calif.

- Indicates 2 1/4" Pipe tagged R.E. 862 set unless noted otherwise.
- ⊙ Indicates 2 1/4" Pipe found unless noted otherwise.

COUNTY SURVEYOR'S CERTIFICATE

This map has been examined for conformance with the requirements of Chapter 15 of Division 3 of the Business and Professions Code this 6 day of June, 1962.

A. C. KEITH County Surveyor

By A. T. Worsley Deputy
FB 713, '5
FB 674, '79

25 37/2

37/2