

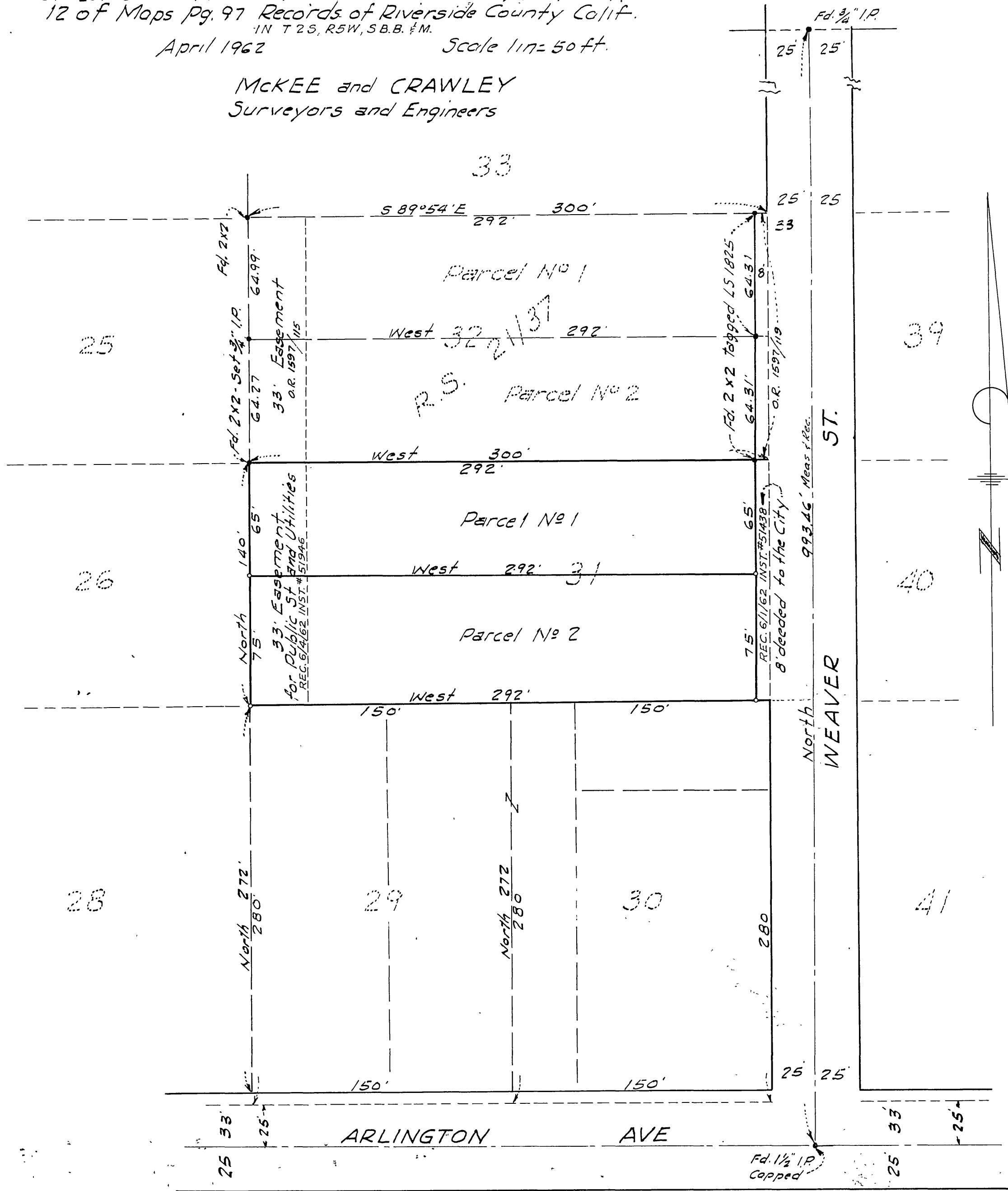
IN THE CITY OF RIVERSIDE
RECORD OF SURVEY

Filed for record at request of County Surveyor this 25 day of June
 1962 at 11:00 A.M. in Book 37 of Record of Survey at Page 21
 Fee \$ 5.00

Jack A. Ross
 County Recorder
 By William W. Balogh
 Deputy

of Lot 31 Gafford Gardens as shown by Map on file in Bk.
 12 of Maps Pg. 97 Records of Riverside County Calif.
 1N T 2 S, R 5 W, S.B.B. & M.
 April 1962 Scale 1 in = 50 ft.

McKee and CRAWLEY
 Surveyors and Engineers



This map correctly represents a survey made by me or under my direction in conformance with the requirements of Chapter 15 of Division 3 of the business and professions code at the request of J.W. Longe. In April 1962

George O. Crawley
 (Signed and Sealed)
 No. 9455

Note: Bearings are shown on the center line of WEAVER St shown as North on Map of GAFFORD GARDENS Rec. in M.B. 12 Pg. 97 Records of Riv. Co. Calif.
 Monuments found as noted
 3/4" Iron pipe tagged R.E. 9455 set at all corners shown thus.

This map has been examined for conformance with the requirements of Chapter 15 of Division 3 of the Business and Professions Code this 21st day of June 1962.

A.C. KEITH
 County Surveyor
 By G.T. Worsley
 Deputy