

IN THE CITY OF RIVERSIDE

RECORD OF SURVEY

OF LOTS 11, 12, 13 & 14 OF NON-RESIDENTIAL "M-2"
 GENERAL MANUFACTURING SUBDIVISION N^o M-12
 UNIT N^o 2 AS SHOWN IN M. B. 34 PAGE 38, RECORDS
 OF RIVERSIDE COUNTY, CALIFORNIA - LOCATED
 IN SECTION 24, T. 2 S. R. 5 W., S. B. B. & M.
 JUNE 1962

SCALE: 1" = 50'

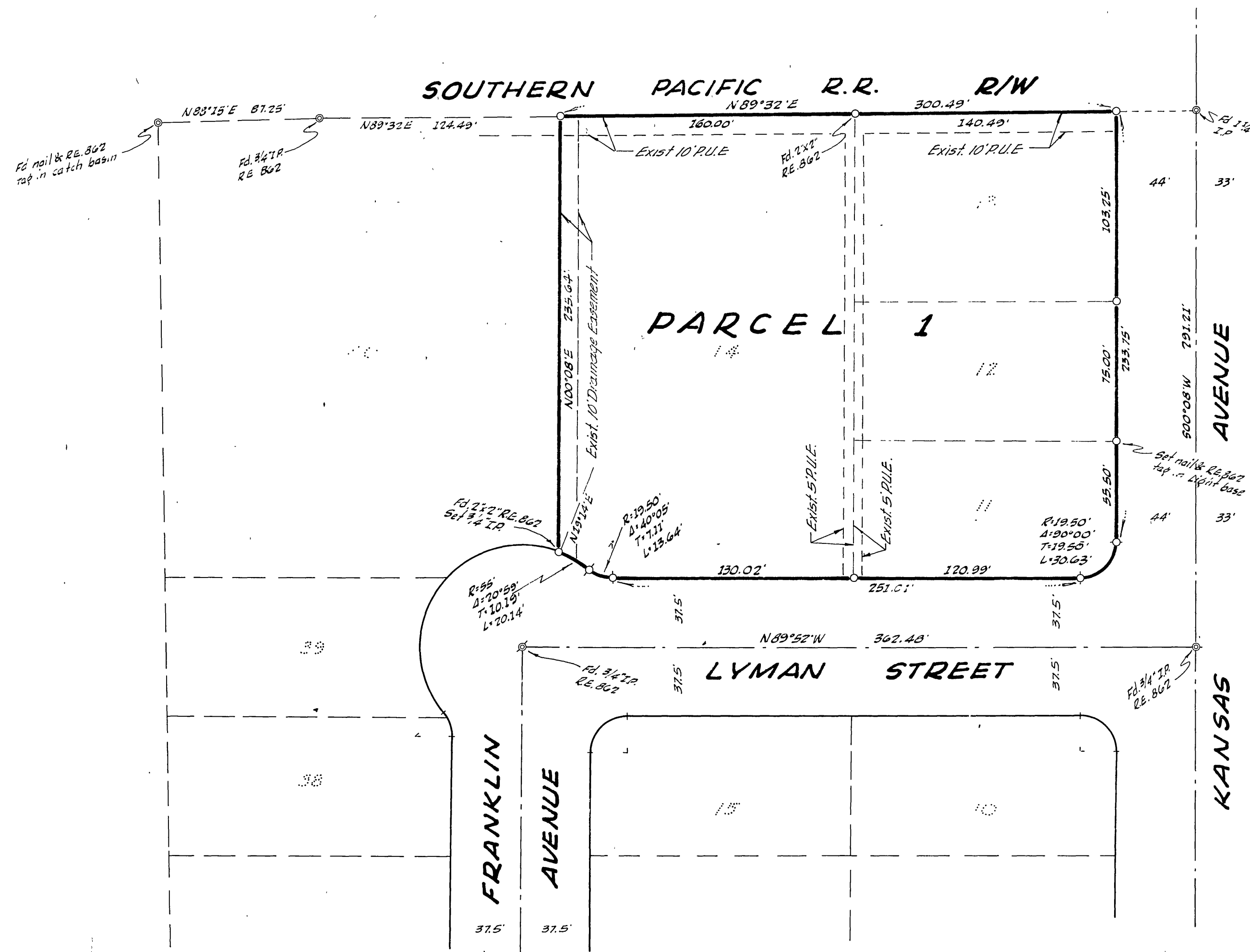
J. F. DAVIDSON, C.E.

Filed for record at the request of County Surveyor
 this 9 day of July, 1962
 at 12:30 P.M. in Book 37 of Record of Survey at Page
 39

Fee \$ 5:00 No. _____
 JACK A. ROSS County Recorder

By William W. Balogh Deputy

SURVEYED AT THE REQUEST OF
 GEORGIA PACIFIC CORP.



ENGINEER'S CERTIFICATE

This map correctly represents a survey made by me or under my direction in conformance with the requirements of Chapter 15 of Division 3 of the Business and Professions Code at the request of Georgia Pacific Corp. in June, 1962.

James F. Davidson Jr.
 Licensed Land Surveyor N^o 3018

ENGINEER'S NOTE

Bearings are based on the centerline of Kansas Avenue being S00°08'W as shown on map of NON-RESIDENTIAL "M-2" GENERAL MANUFACTURING SUBDIVISION N^o M-12 UNIT N^o 2, Map Book 34 Page 38, Records of Riverside County, California.

3/4" Iron Pipe tagged R.E. 862 set at all points shown thus unless otherwise indicated.

COUNTY SURVEYOR'S CERTIFICATE

This map has been examined for conformance with the requirements of Chapter 15 of Division 3 of the Business and Professions Code this 6th day of July, 1962.

A.C. KEITH County Surveyor

By G. T. Worsley Deputy

FB 773-12