

# IN THE CITY OF RIVERSIDE RECORD OF SURVEY

Filed for record at request of County Surveyor this 13 day of July  
1962 at 1:00 P. M. in Book 37 of Record of Survey at Page 48  
Fee None  
By Jack A. Ross  
County Recorder  
By William L. DeLoach  
Deputy

OF PORTIONS OF LOTS 1 AND 2, BLOCK 75 OF ARLINGTON HEIGHTS AS SHOWN  
BY MAP ON FILE IN BOOK 11, PAGES 20 AND 21, RECORDS OF SAN BERNARDINO  
COUNTY CALIF.

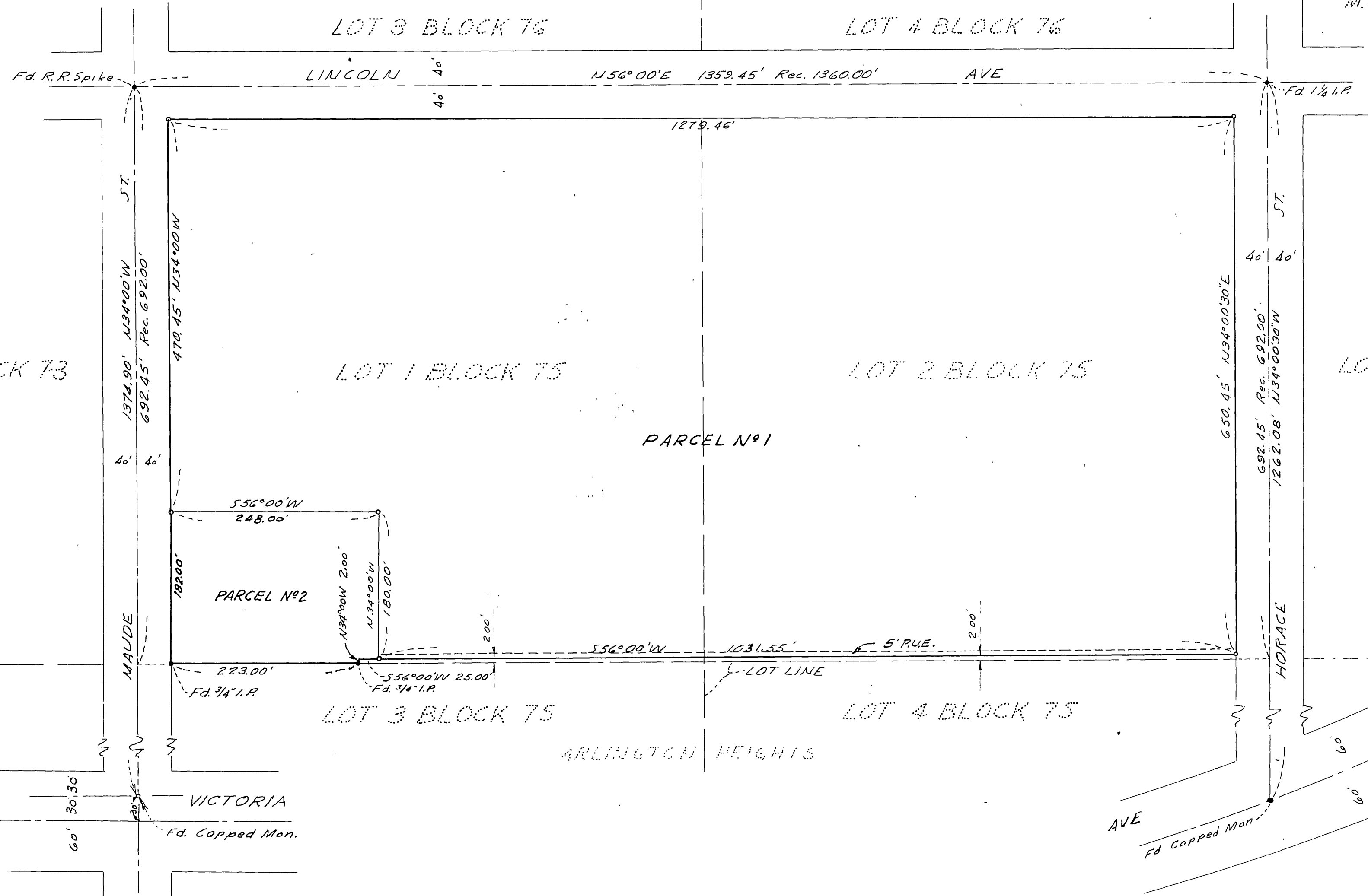
AUGUST 1961

SCALE 1" = 100'

LINCOLN GROVES  
M. B. 27/63, 64

M<sup>rs</sup> KEE and CRAWLEY - Surveyors & Engineers

GREENBRIAR  
M. B. 29/2



NOTE: BEARINGS ARE BASED ON THE  $\phi$   
OF LINCOLN AVE SHOWN AS N56°00'E AS  
PER M.B. 11 PAGES 20 & 21 RECORDS S.B. Co.  
- INDICATES 3/4" IRON PIPE SET, TAGGED  
R.E. No 9455.  
MONUMENTS FOUND AS SHOWN.

This map correctly represents a survey made by me or under my direction in conformance with  
the requirements of Chapter 15 of Division 3 of the business and professions code at the request  
of RIVERSIDE CITY SCHOOLS in AUGUST 1961

George O. Crawley  
(Signed and Sealed)  
R.C.E. No 9455

This map has been examined for conformance with the requirements of Chapter 15 of Division 3  
of the Business and Professions Code this 12<sup>th</sup> day of July 1962.

A.G. KEITH  
County Surveyor

By A.C. Keith

05 37/48 9455