

IN THE CITY OF RIVERSIDE RECORD OF SURVEY

BEING A SURVEY OF A PORTION OF LOT 108 OF DIVISION "C" HALLS ADDITION TO RIVERSIDE, RECORDED IN MAP BOOK 9, PAGE 3, RECORDS OF SAN BERNARDINO COUNTY, CALIFORNIA

MARCH 1962

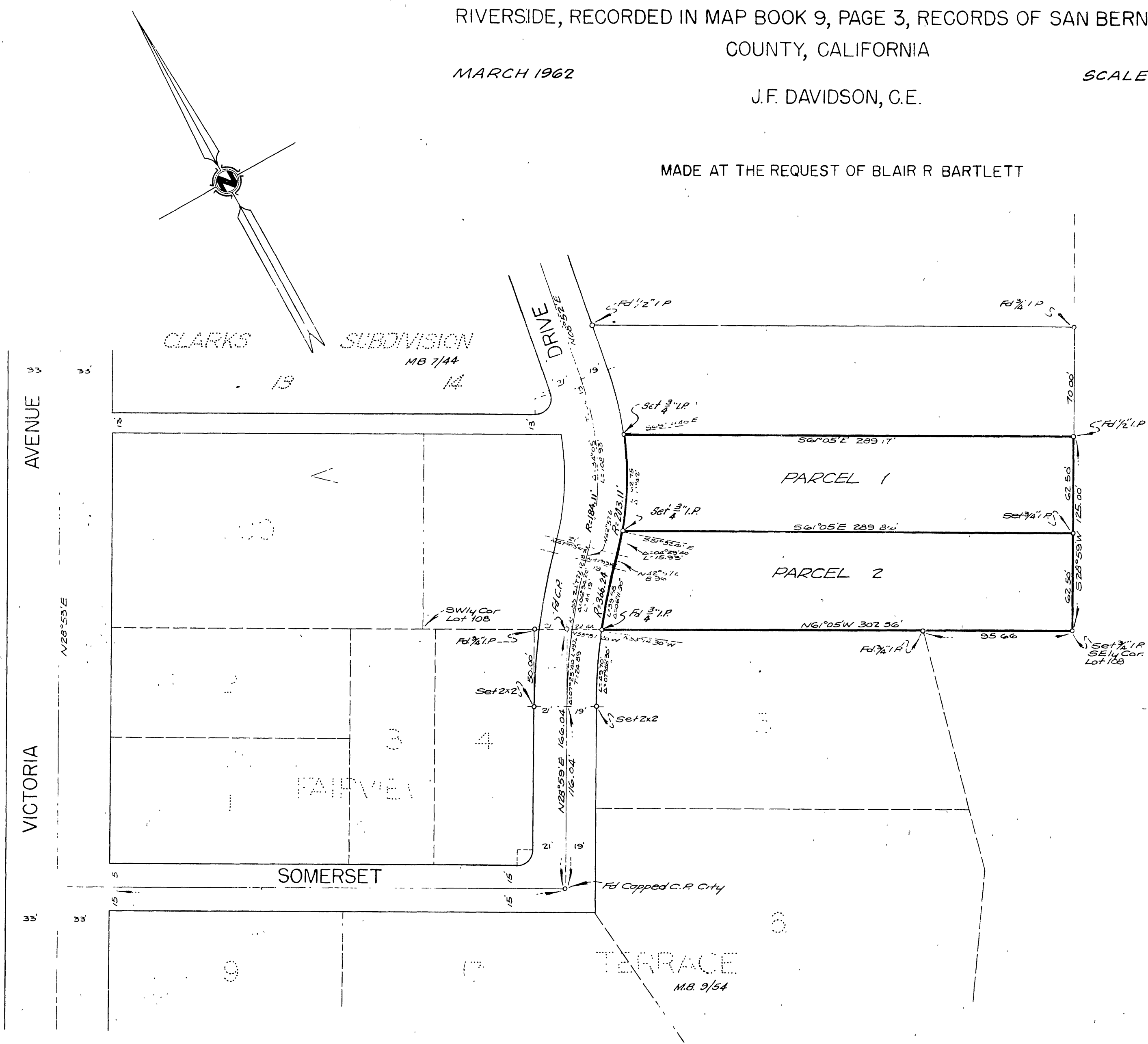
J.F. DAVIDSON, C.E.

SCALE 1"=50'

MADE AT THE REQUEST OF BLAIR R BARTLETT

Filed for record at the request of County Surveyor this 15 day of August, 1962 at 4:20 P.M. in Book 37 of Record of Survey at Page 68.

Fee \$ 5.⁰⁰ No. _____
JACK A. ROSS County Recorder
By William W. Pate Deputy



ENGINEER'S CERTIFICATE

This map correctly represents a survey made by me or under my supervision in conformance with the requirements of Chapter 15 of Division 3 of the Business and Professions Code at the request of Blair R. Bartlett in June of 1956.

J. F. Davidson
Registered Civil Engineer No. 862

ENGINEER'S NOTE

Bearings are based on the N1/4 line of Lot 5, being S 61° 05' E, as shown on map of "FAIRVIEW TERRACE" Map Book 9, Pg 54, Records of Riverside County, California

COUNTY SURVEYOR'S CERTIFICATE

This map has been examined for conformance with the requirements of Chapter 15 of Division 3 of the Business and Professions Code this 15th day of August, 1962

A.C. KEITH County Surveyor

By G. T. Worsley Deputy