

39/69

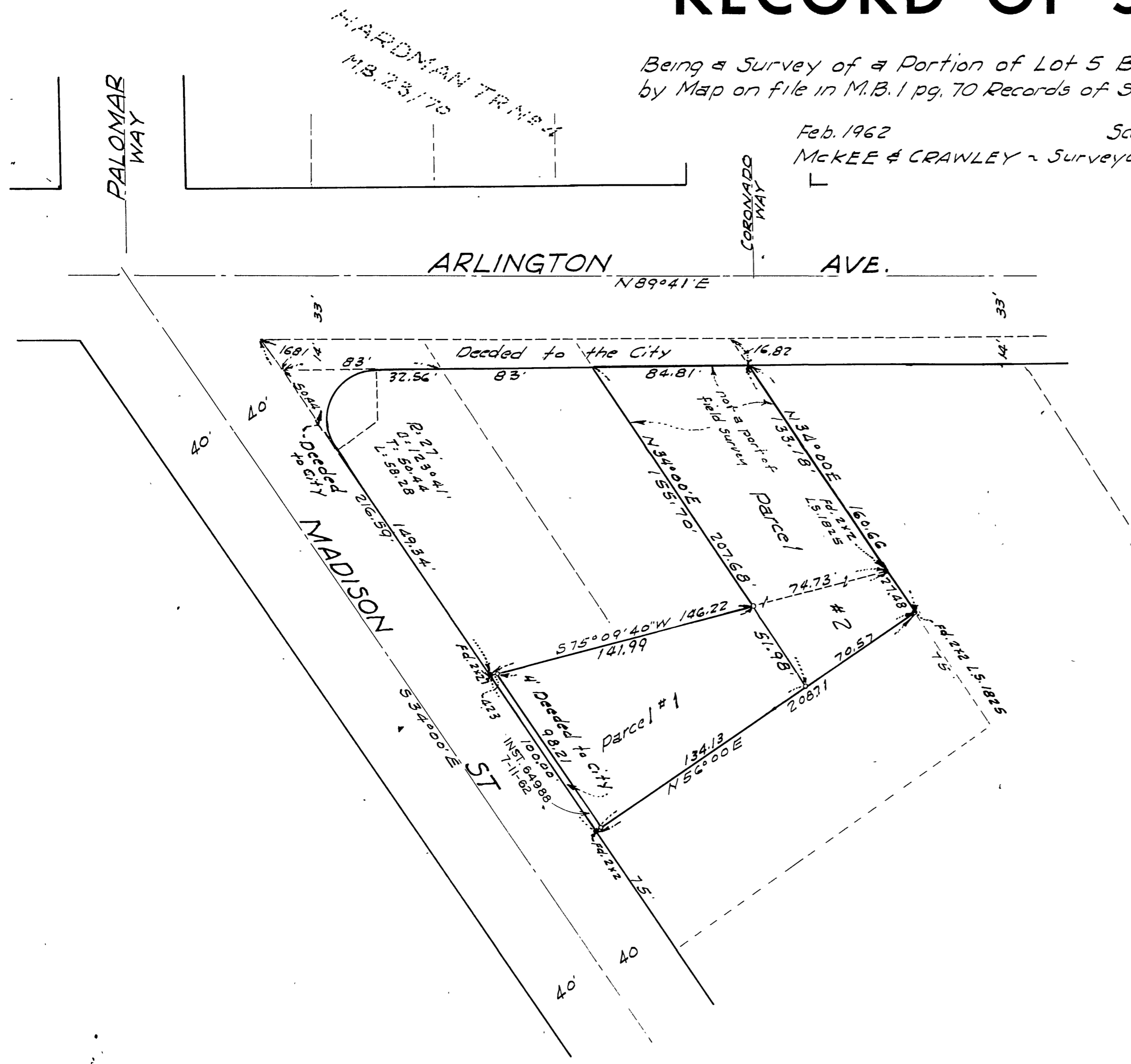
IN THE CITY OF RIVERSIDE

RECORD OF SURVEY

Being a Survey of a Portion of Lot 5 Bk 17 R.L. & I. Co. as shown by Map on file in M.B. 1 pg. 70 Records of San Bernardino Co. California

Feb. 1962 Scale, 1 in = 50 ft.
McKEE & CRAWLEY - Surveyors & Engineers

Filed for record at request of County Surveyor this 15 day of August 1962 at 4:20 P.M. in Book 37 of Record of Survey at Page 69
Fee \$ 5.00
By *Jack A. Pass* County Recorder
William H. Balogh Deputy



This map correctly represents a survey made by me or under my direction in conformance with the requirements of Chapter 15 of Division 3 of the business and professions code at the request of *R.M. King* in *February*, 1962.

George O. Crawley
(Signed and Sealed)

R.C.E. No. 9455

Note: Bearings are based on the center line of Madison St. shown as S 34° 00' E as per R.S. 6/54. Monuments found as shown. • Indicates 1/2" Iron pipe tagged RE. 9455

This map has been examined for conformance with the requirements of Chapter 15 of Division 3 of the Business and Professions Code this 15th day of August, 1962.

A.C. Keith
County Surveyor

By *G.T. Worsley*
Deputy

F.B. 50-39 Jp. 578

RS 37/69