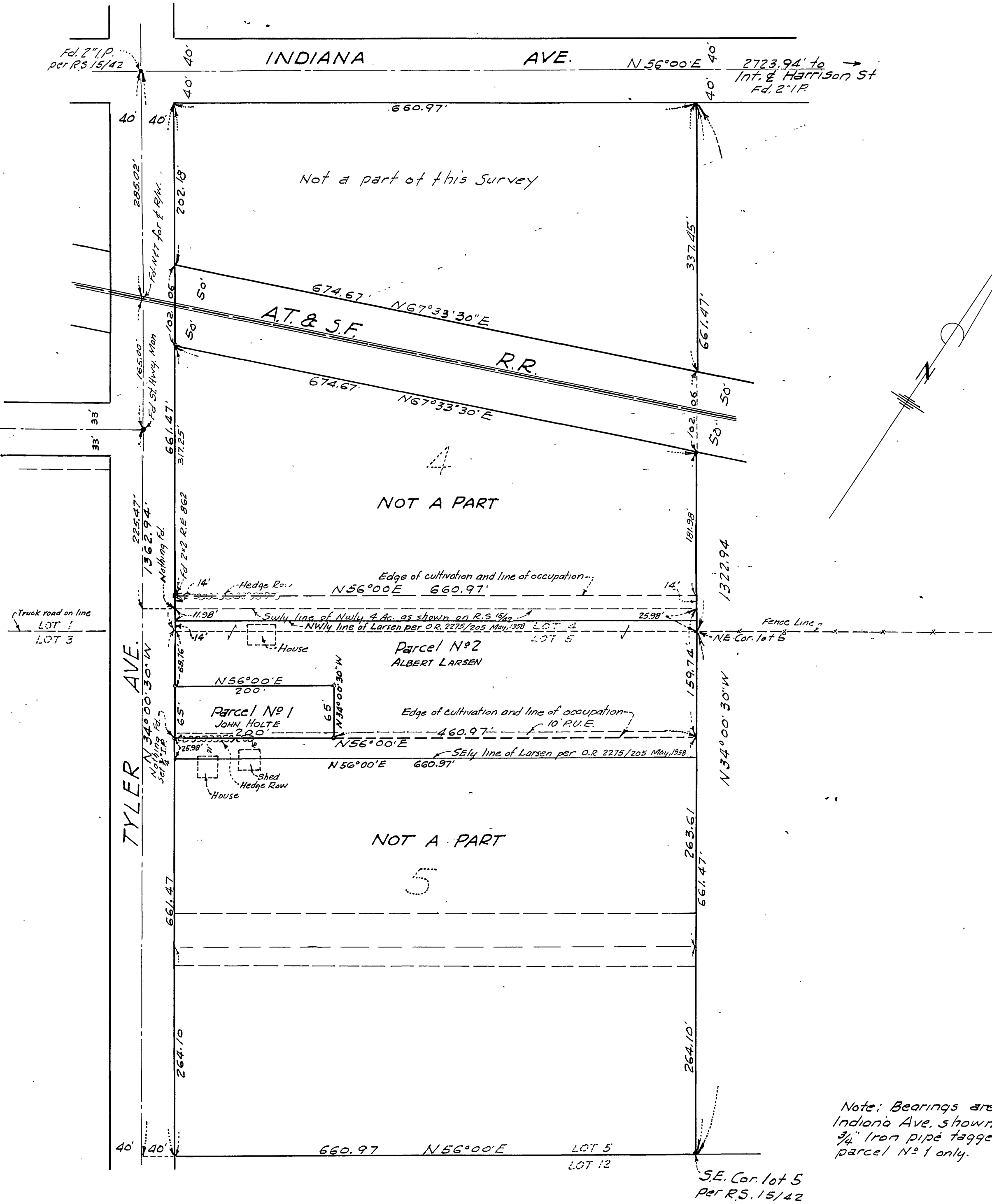


IN THE CITY OF RIVERSIDE RECORD OF SURVEY

Filed for record at request of County Surveyor this 15 day of August
1962 at 4:20 P.M. in Book 27 of Record of Survey at Page 23
Fee \$5.00
By Jack A. Ross County Recorder
By William R. DeLoach Deputy

of a Portion of Lots 4 and 5 Blk. 28 of the Lands of the Riverside
Land and Irrigating Co. as shown by Map on file in Bk. 1 of Maps
Pg. 70 Records of San Bernardino Co., Calif.

Sept. 1961 Scale 1 in. = 100 ft.
McKEE and CRAWLEY - Surveyors & Engineers



Note: Bearings are based on the center line of
Indiana Ave. shown as N56°00'E on R.S. 15/42
3/4" Iron pipe tagged R.E. 9455 set at all corners
parcel No. 1 only.

This map correctly represents a survey made by me or under my direction in conformance with
the requirements of Chapter 15 of Division 3 of the business and professions code at the request
of John Holte & Albert Larsen in September, 1961
George O. Crawley
(Signed and Sealed)
Reg. C.E. No. 9455

This map has been examined for conformance with the requirements of Chapter 15 of Division 3
of the Business and Professions Code this 15th day of August, 1962
A.C. Keith
County Surveyor
By G.T. Worsley
Deputy