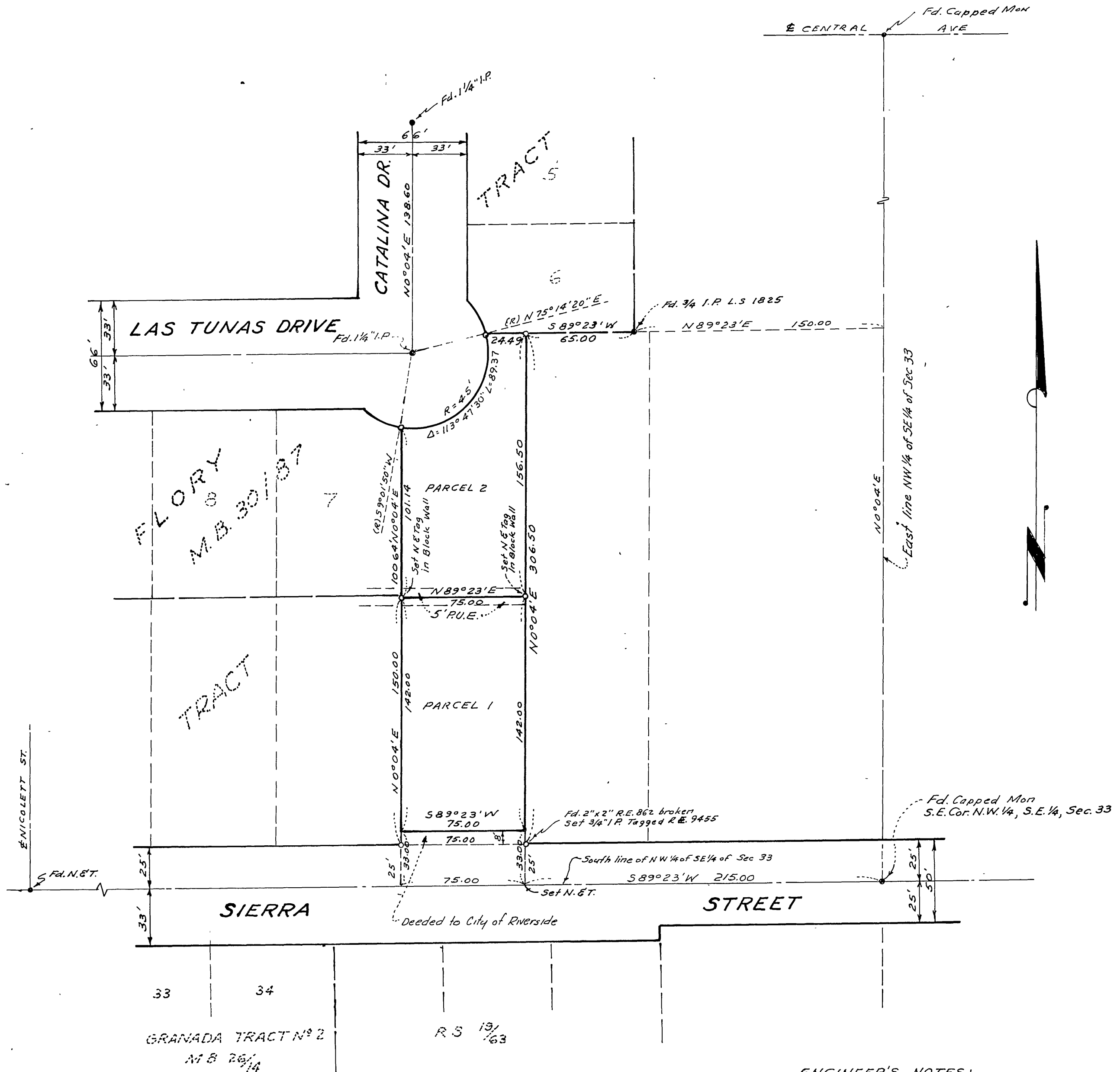


IN THE CITY OF RIVERSIDE
RECORD OF SURVEY
 OF PORTIONS OF THE NORTHWEST QUARTER OF THE
 SOUTHEAST QUARTER OF SECTION 33, T.2S., R.5W., S.B.&M.
 JUNE 1962
 SCALE 1"=50'

Filed for record at request of County Surveyor this 15 day of August
 19 62 at 4:20 P.M. in Book 37 of Record of Survey at Page 74
 Fee \$ 5.00
 No. _____
 Jank A. Pass
 County Recorder
 By: William H. Balof
 Deputy

Mc KEE AND CRAWLEY
 Surveyors and Engineers
 Riverside California



ENGINEER'S NOTES:
 The center line of Sierra Street shown as S 89° 23' W on map of FLORY TRACT, filed in Book 30 of Maps at Page 87, used as the Basis of Bearings for this map.
 • Indicates monuments found as noted.
 o Indicates 3/4" I.P. set and tagged R.E. 9455 unless otherwise noted

This map correctly represents a survey made by me or under my direction in conformance with the requirements of Chapter 15 of Division 3 of the business and professions code at the request of J. A. WELLINGTON In JUNE, 19 62.
 George O. Crawley
 (Signed and Sealed)
 R.C.E. No. 2435

This map has been examined for conformance with the requirements of Chapter 15 of Division 3 of the Business and Professions Code this 15th day of August, 19 62.
 A.C. KEITH
 County Surveyor
 By: G. T. Wesley
 Deputy