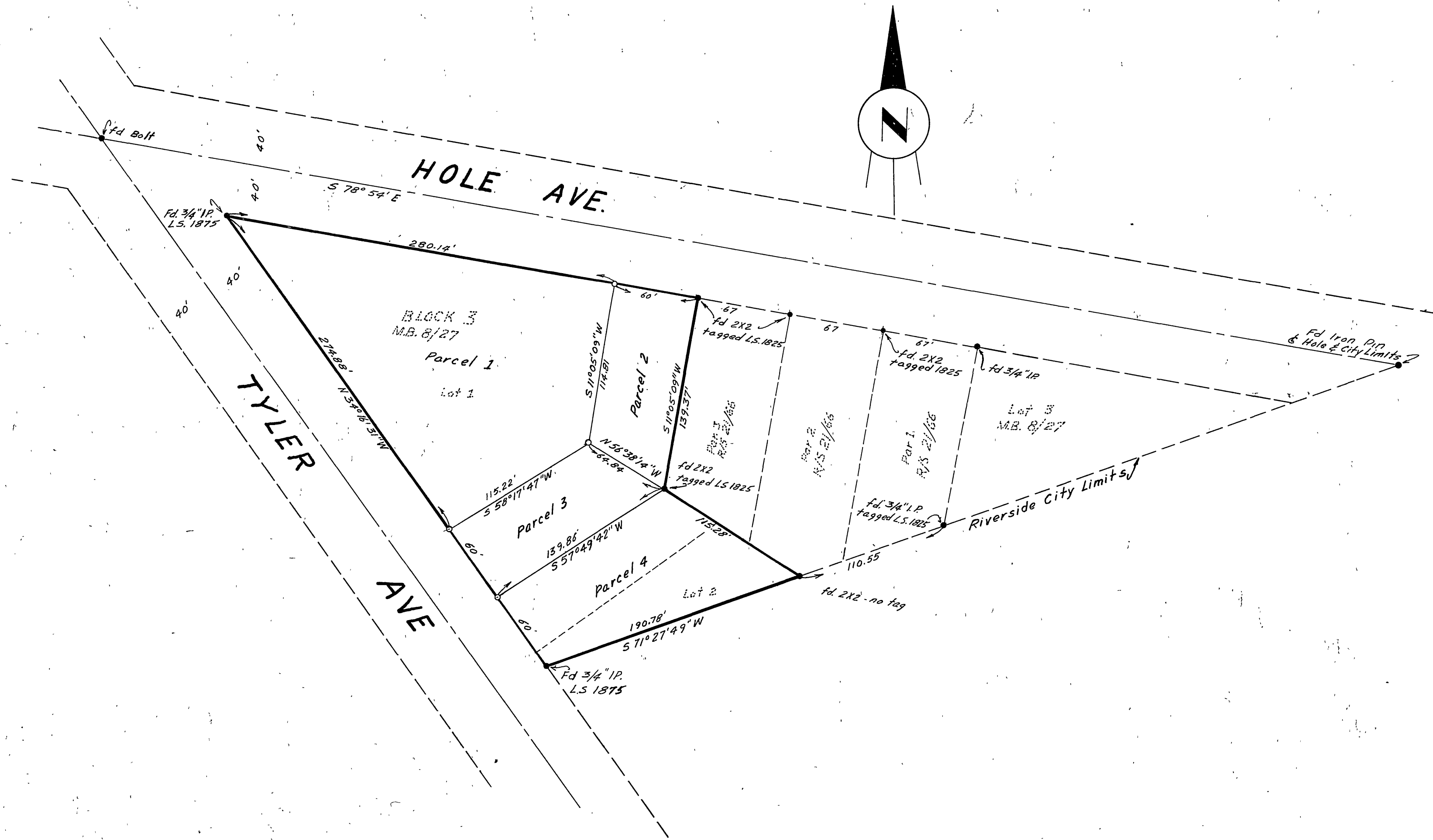


IN THE COUNTY OF RIVERSIDE RECORD OF SURVEY

OF A PORTION OF LOTS 1 AND 2, BLOCK 3 OF LA SIERRA HEIGHTS TRACT NO. 3, AS RECORDED IN BOOK 8, AT PAGE 27 OF MAPS, RECORDS OF RIVERSIDE COUNTY, CALIF, IN THE RANCHO LA SIERRA SEPULVEDA.

HUGH M. GALLAHER AUGUST 1962 SCALE 1" = 60'

Filed for record at request of County Surveyor this 4 day of Sept
19 62 at 8:00 P. M. in Book 37 of Record of Survey at Page 80
Fee \$ 5.00
By Jack A. Ross
County Recorder
No. 83047 By William H. Balogh
Deputy



ENGINEER'S NOTES:
Basis of Bearings is the Centerline of Hole Ave as shown on map of La Sierra Heights No. 2, Map Book 8, Page 27, taken as S 78° 54' E
O--- Indicates 2X2 Rwd. stake, set and tagged R.C.E. 7304
●--- Indicates monuments found as noted

This map correctly represents a survey made by me or under my direction in conformance with the requirements of Chapter 15 of Division 3 of the business and professions code at the request of Steve J. DeGennaro in August 6th, 1962
Hugh M. Gallaher
R.C.E. 7304

This map has been examined for conformance with the requirements of Chapter 15 of Division 3 of the Business and Professions Code this 30th day of August, 1962
A.C. Keith
County Surveyor
By G.T. Wesley
Deputy