

IN THE CITY OF RIVERSIDE RECORD OF SURVEY

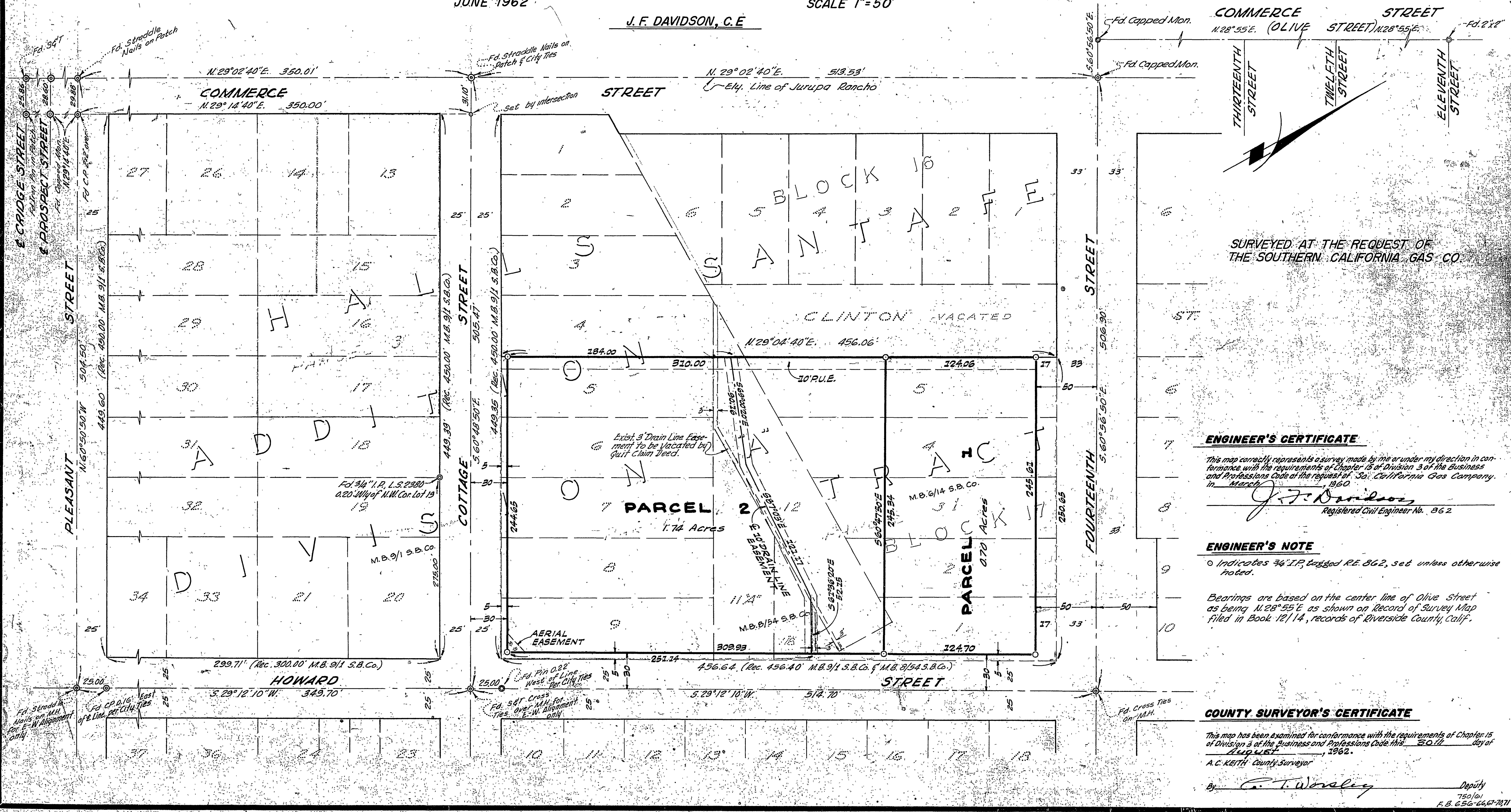
OF A PORTION OF LOTS 4, 5, 6, 7, 8, 9, AND 12 OF DIVISION "A," HALL'S ADDITION TO RIVERSIDE, M. B. 9/1, RECORDS OF SAN BERNARDINO COUNTY, CALIF., AND A PORTION OF LOTS 1, 2, 3, 4, AND 5, BLOCK 17 OF SANTA FE TRACT, M. B. 6/14, RECORDS OF SAN BERNARDINO COUNTY, CALIF. ALSO A PORTION OF LOTS 11A, 11B AS SHOWN ON SUPPLEMENTARY MAPS OF SANTA FE TRACT, M. B. 8/54, RECORDS OF SAN BERNARDINO COUNTY, CALIF. LOCATED IN T. 2 S. R. 5 W., S. B. B. & M.

JUNE 1962

SCALE 1"=50'

J. F. DAVIDSON, C.E.

Filed for Record at request of County Surveyor this 14 day of
JULY, 1962 at 3:00 P.M. in Book 27
of Record of Survey of Page 86
Fee \$ 5.00 No. S3053
JACK A. ROSS County Recorder
By William H. Balogh Deputy



SURVEYED AT THE REQUEST OF
THE SOUTHERN CALIFORNIA GAS CO.

ENGINEER'S CERTIFICATE

This map correctly represents a survey made by me or under my direction in conformance with the requirements of Chapter 15 of Division 3 of the Business and Professions Code at the request of Southern California Gas Company, in March, 1960.

J. F. Davidson
Registered Civil Engineer No. 862

ENGINEER'S NOTE

o Indicates 3/4" I.P. tagged R.E. 862, set unless otherwise noted.

Bearings are based on the center line of Olive Street as being N. 28° 55' E as shown on Record of Survey Map filed in Book 12/14, records of Riverside County, Calif.

COUNTY SURVEYOR'S CERTIFICATE

This map has been examined for conformance with the requirements of Chapter 15 of Division 3 of the Business and Professions Code this 30th day of JULY, 1962.

A. C. KEITH County Surveyor
By C. T. Worsley Deputy
F.B. 656-667-7871