

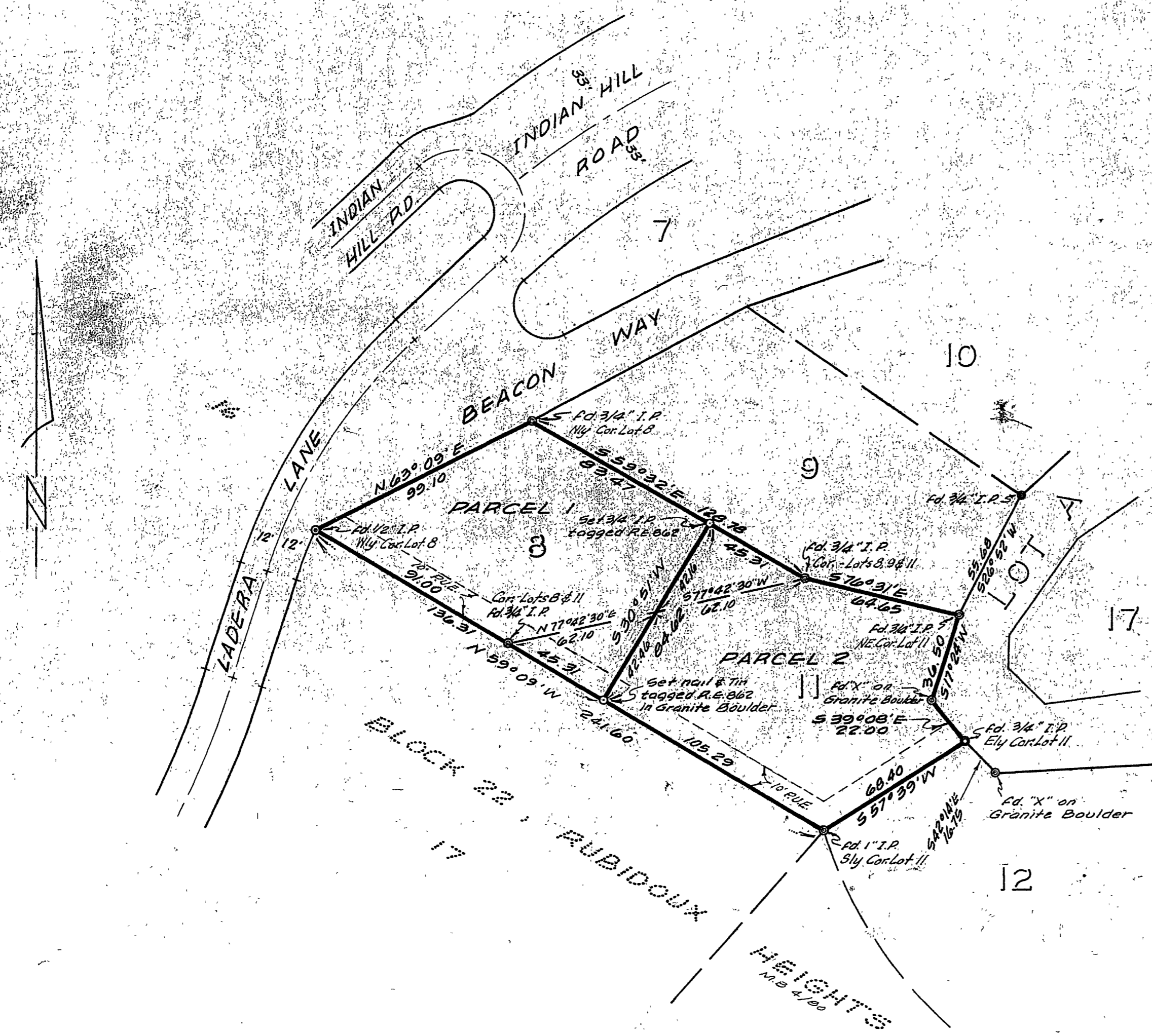
# IN THE CITY OF RIVERSIDE RECORD OF SURVEY

OF LOTS 8 AND 11 OF BEACON HEIGHTS, MAP BOOK 15, PAGE 84 AND 85, RECORDS OF RIVERSIDE COUNTY, CALIFORNIA, LOCATED IN RUBIDOUX RANCHO  
AUGUST 1962 J. F. DAVIDSON, C.E. SCALE 1"=40'

Filed for record at the request of County Surveyor this 21 day of Sept. 1962 at 10:31 AM in Book 37 of Record of Survey at Page 99.

Fee \$ 5:00 No. 88624  
JACK A. ROSS County Recorder

By William W. Ralph Deputy



Made at the request of Peter L. Hansen

### ENGINEER'S CERTIFICATE

This map correctly represents a survey made by me or under my direction in conformance with the requirements of Chapter 15 of Division 3 of the Business and Professions Code at the request of Peter L. Hansen in August, 1962.

J. F. Davidson  
Registered Civil Engineer No. 8642

### ENGINEER'S NOTE

Bearings are based on the Southwesterly line of Lots 8 and 11, being N 59° 09' W, as shown on the map of BEACON HEIGHTS, MB. 15/84, 85 Records of Riverside County, California.

### COUNTY SURVEYOR'S CERTIFICATE

This map has been examined for conformance with the requirements of Chapter 15 of Division 3 of the Business and Professions Code this 18<sup>th</sup> day of September, 1962.

A.C. KEITH County Surveyor  
By G. T. Worsley Deputy  
FB. 760-65