

IN THE CITY OF RIVERSIDE

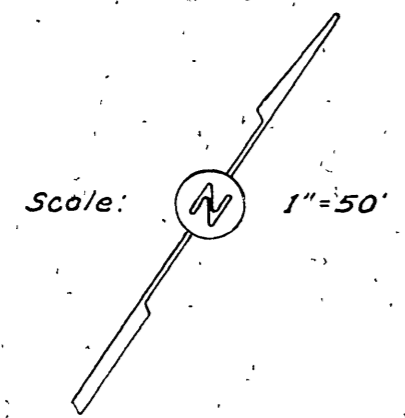
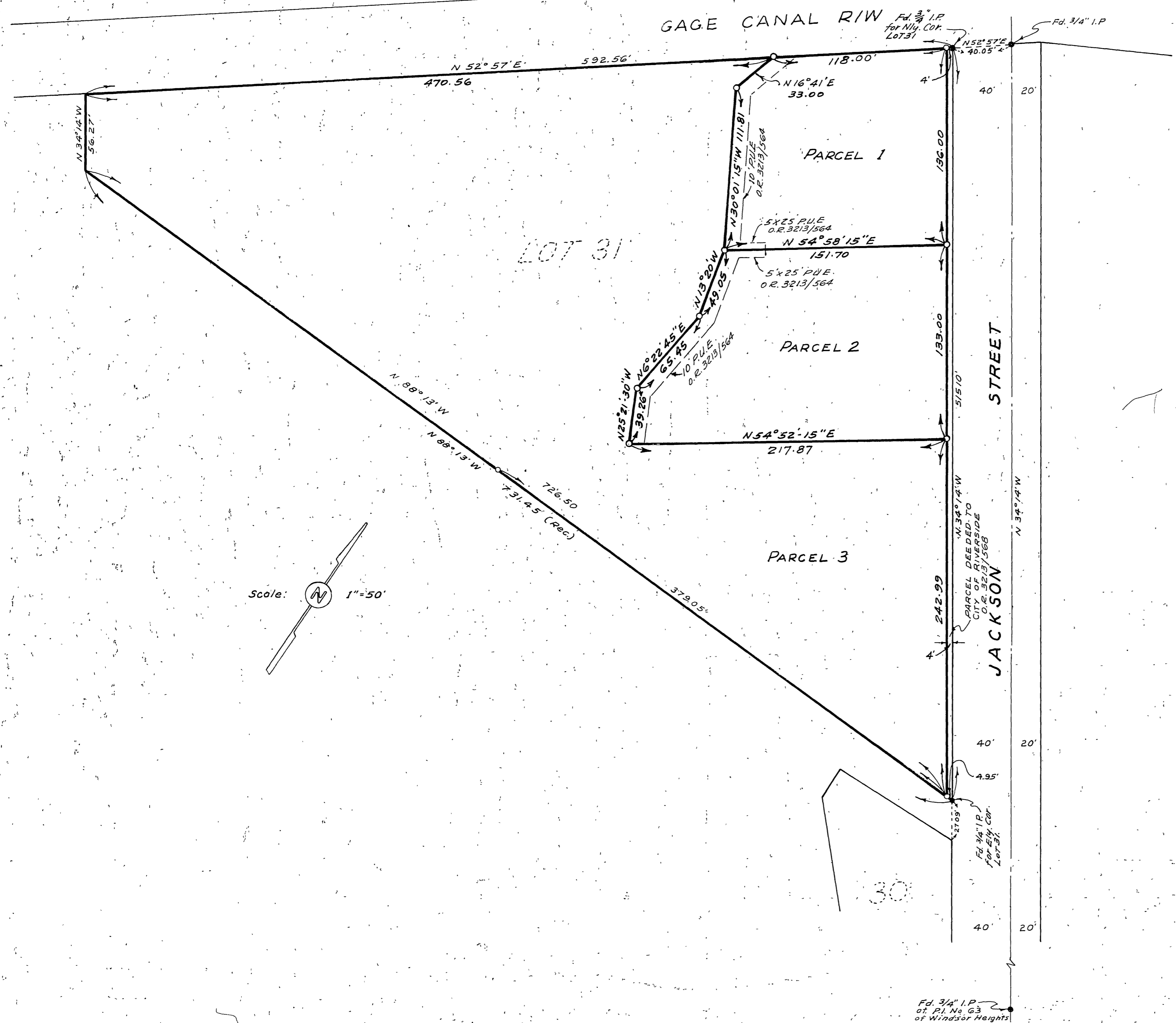
RECORD OF SURVEY

OF LOT 31 OF WINDSOR HEIGHTS AS SHOWN BY MAP ON FILE IN BOOK 12 OF MAPS PAGES 8, 9 & 10, RIVERSIDE COUNTY RECORDS. IN SECTION 21 T.3S., R.5W. S.B.B.M.

Filed for Record at request of County Surveyor this 4 day of Oct 1962 at 4:30 P.M. in Book 38 of Record of Survey at Page 5
Fee \$ 5.00 No.
JACK A. ROSS County Recorder
By William H. B. Blough Deputy

"BY"
ALBERT A. WEBB ASSOCIATES
CIVIL ENGINEERS
RIVERSIDE, CALIFORNIA
August, 1962

Surveyed at the request of; The Gage Canal Co.



ENGINEER'S CERTIFICATE

This map correctly represents a survey made by me or under my direction in conformance with the requirements of Chapter 15 of Division 3 of the Business and Profession Code at the request of The Gage Canal Co. in August, 1962.
Ernest N. Webb
Registered Civil Engineer No 9876

ENGINEER'S NOTE:

Basis of Bearings is the Centerline of Jackson Street taken as N 34° 14' W as same is shown by map of Windsor Heights on file in Book 12 of maps at Page 8, 9 & 10 thereof, Records of Riverside County California.
Found monuments as noted at all points shown thus ●.
Set 3/4" Iron Pipe tagged R.E. 9876 at all points shown thus ○, unless otherwise noted.
Parcel 3 is shown in order to conform to City of Riverside requirements, bearings and distances shown are taken from map of record.

COUNTY SURVEYOR'S CERTIFICATE

This map has been examined for conformance with the requirements of Chapter 15 of Division 3 of the Business and Profession Code this 3rd day of October 1962
A.C. KEITH County Surveyor
By C. T. Worsley Deputy

PS 38/5