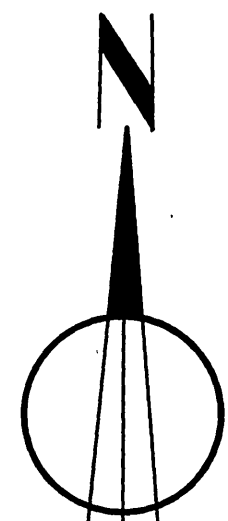
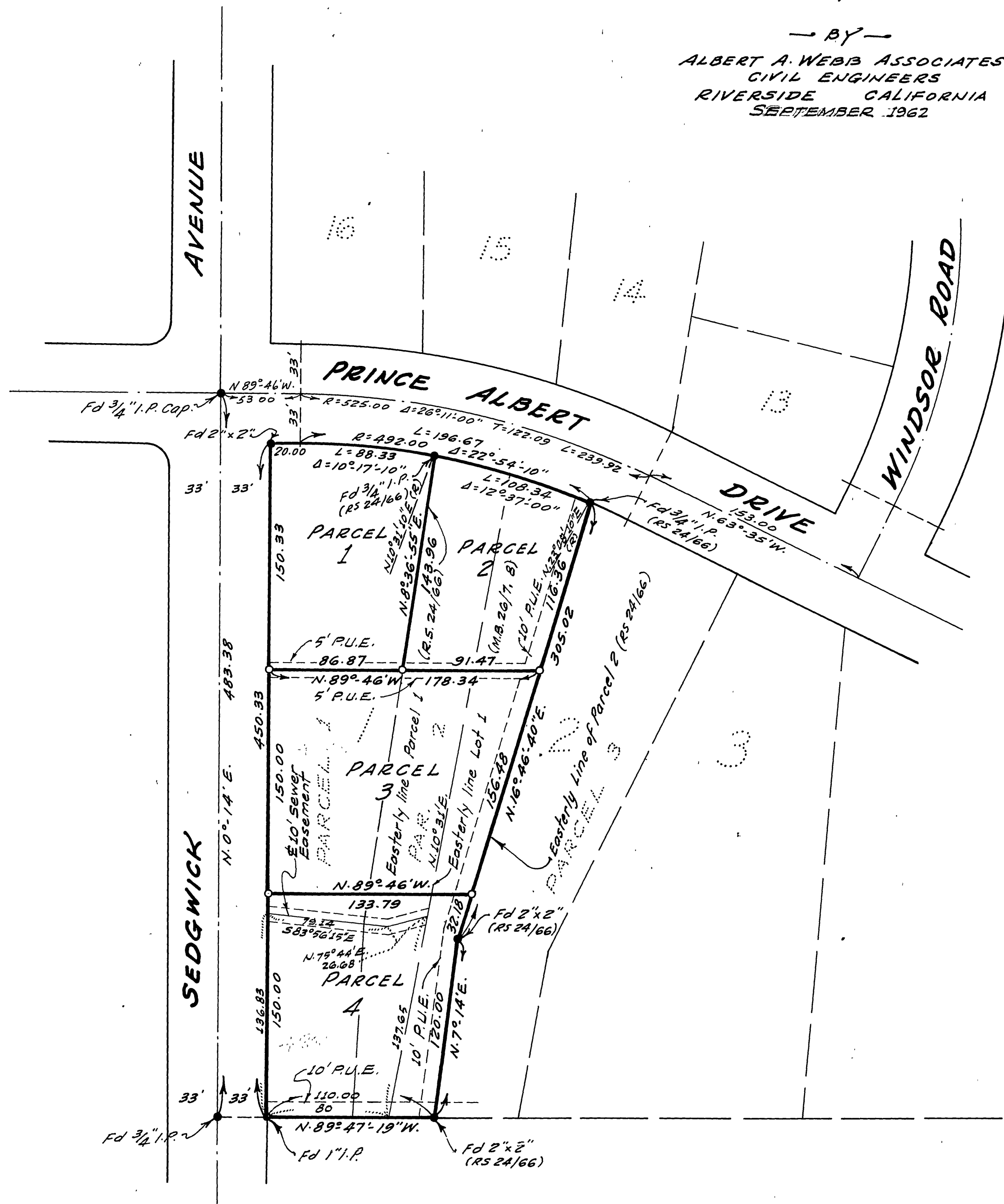


IN THE CITY OF RIVERSIDE RECORD OF SURVEY

OF LOT 1 AND A PORTION OF LOT 2 OF PRINCE ALBERT ESTATES
AS RECORDED IN BOOK 26 OF MAPS AT PAGES 7 & 8 THEREOF,
RECORDS OF RIVERSIDE COUNTY, CALIFORNIA

— BY —
ALBERT A. WEBB ASSOCIATES
CIVIL ENGINEERS
RIVERSIDE CALIFORNIA
SEPTEMBER 1962

Filed for Record at request of County Surveyor this 2 day of
November, 1962, at 12:02 P.M. in Book 38
of Record of Survey at Page 18
Fee \$ 5.00 No. 1019
JACK A. ROSS County Recorder
By W. W. Balogh Deputy



Scale: - 1"=60'

ENGINEER'S CERTIFICATE

This map correctly represents a survey made by me or under my direction in conformance with the requirements of Chapter 15 of Division 3 of the Business and Profession Code at the request of Robert Sweeney, in September 1962.

Albert A. Webb
Registered Civil Engineer No 9876

ENGINEER'S NOTE:

Basis of Bearings is the centerline of SEDGWICK AVENUE, taken as N. 0° 14' E., as same is shown on map of PRINCE ALBERT ESTATES recorded in Map Book 26 at Pages 7 & 8, records of Riverside County, California.

Found monuments as noted at all points shown thus ●

Set 3/4" Iron Pipe tagged R.E. 9876 at all points shown thus ○

COUNTY SURVEYOR'S CERTIFICATE

This map has been examined for conformance with the requirements of Chapter 15 of Division 3 of the Business and Profession Code this 21st day of October, 1962
A.C. KEITH County Surveyor

By A. T. Worsley Deputy

38/18
RS 26/18