

IN THE CITY OF RIVERSIDE

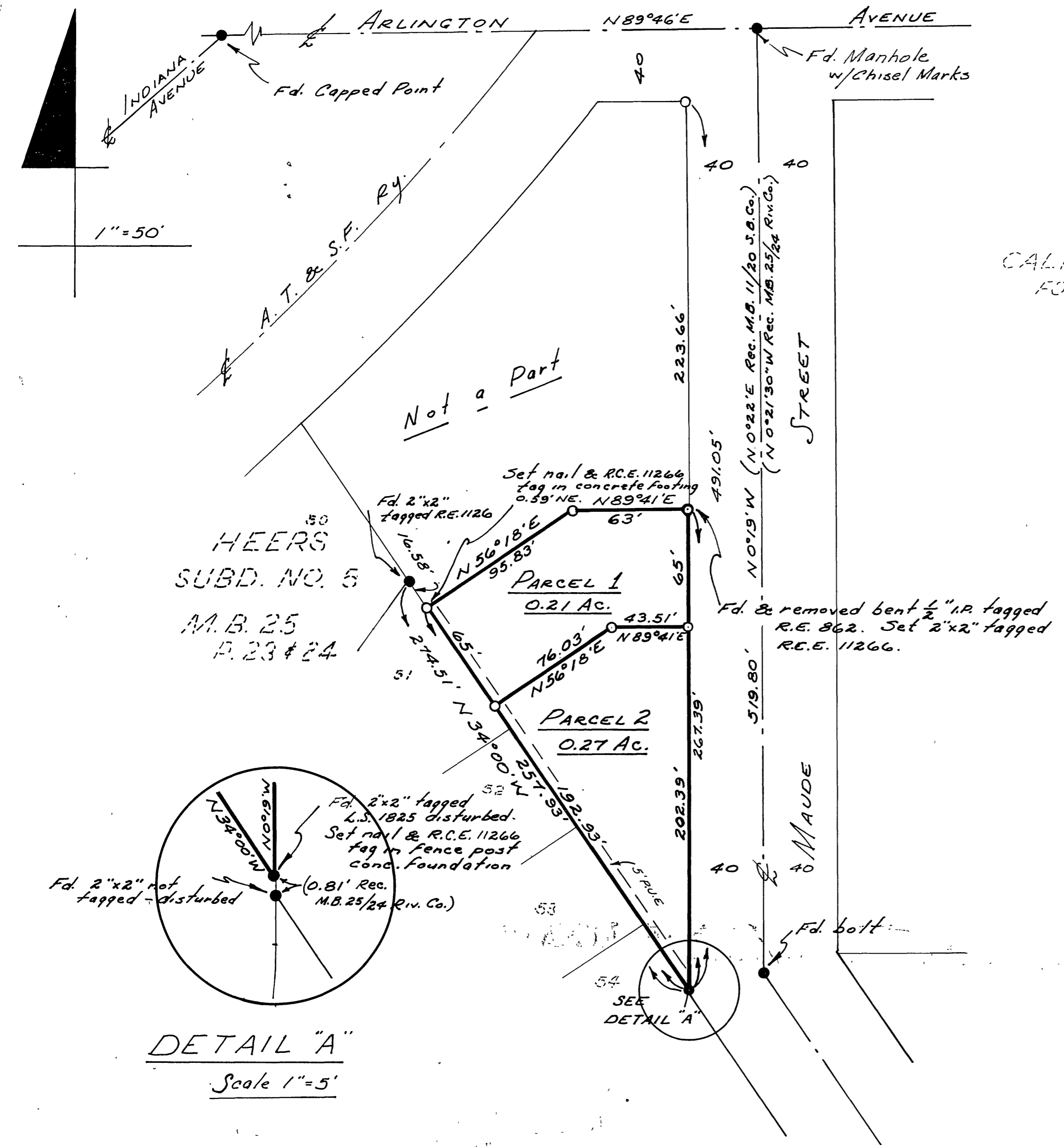
RECORD OF SURVEY

OF A PORTION OF LOT 2 OF BLOCK 71 OF ARLINGTON HEIGHTS AS SHOWN BY MAP RECORDED IN BOOK 11 PAGES 20 & 21 OF MAPS, RECORDS OF SAN BERNARDINO, CALIFORNIA IN NE 1/4 SECTION 3 T.3S. R.5W. S.B.M.

Filed for the record at the request of County Surveyor this 2 day of November, 1962 at 10:00 AM. in Book 38 of Record of Survey at Page 21.

Fee \$ 5.25 No. 10000
JACK A. ROSS County Recorder

By L. A. Ross Deputy



LESTER A. MINNER - CIVIL ENGINEER
65 SOUTH 8TH STREET
BANNING 849-2210

AUGUST 1962

ENGINEER'S CERTIFICATE

This map correctly represents a survey made by me or under my direction in conformance with the requirements of Chapter 15 of Division 3 of the Business and Professions Code at the request of Nick Tavaglione in March, 1962.

Lester A. Minner
Registered Civil Engineer No. 11266

ENGINEER'S NOTE

Basis of bearings is the northeast line of Heers Subdivision No. 5 as shown at Map Book 25 Page 23, 24, Records of Riverside County, and taken as N 34°00'W.

Monuments found shown thus •
Monuments set shown thus ○
All set monuments are 2"x2" tagged R.C.E. 11266 unless otherwise noted.

COUNTY SURVEYOR'S CERTIFICATE

This map has been examined for conformance with the requirements of Chapter 15 of Division 3 of the Business and Professions Code this 31st day of October, 1962.

A. C. KEITH County Surveyor

By C. T. Wondley Deputy

DETAIL "A"
Scale 1"=5'