

IN THE CITY OF RIVERSIDE

RECORD OF SURVEY

OF A PORTION OF LOT 2, BLOCK 42 OF MAP OF SUBDIVISION OF A PORTION OF BLOCKS 41 AND 42 OF ARLINGTON HEIGHTS, MAP BOOK 5, PAGE 171, RECORDS OF RIVERSIDE COUNTY, CALIFORNIA. LOCATED IN T. 3 S. R. 5 W., S. B. B. AND M.

APRIL 1962

J. F. DAVIDSON, C. E.

SCALE 1"=100'

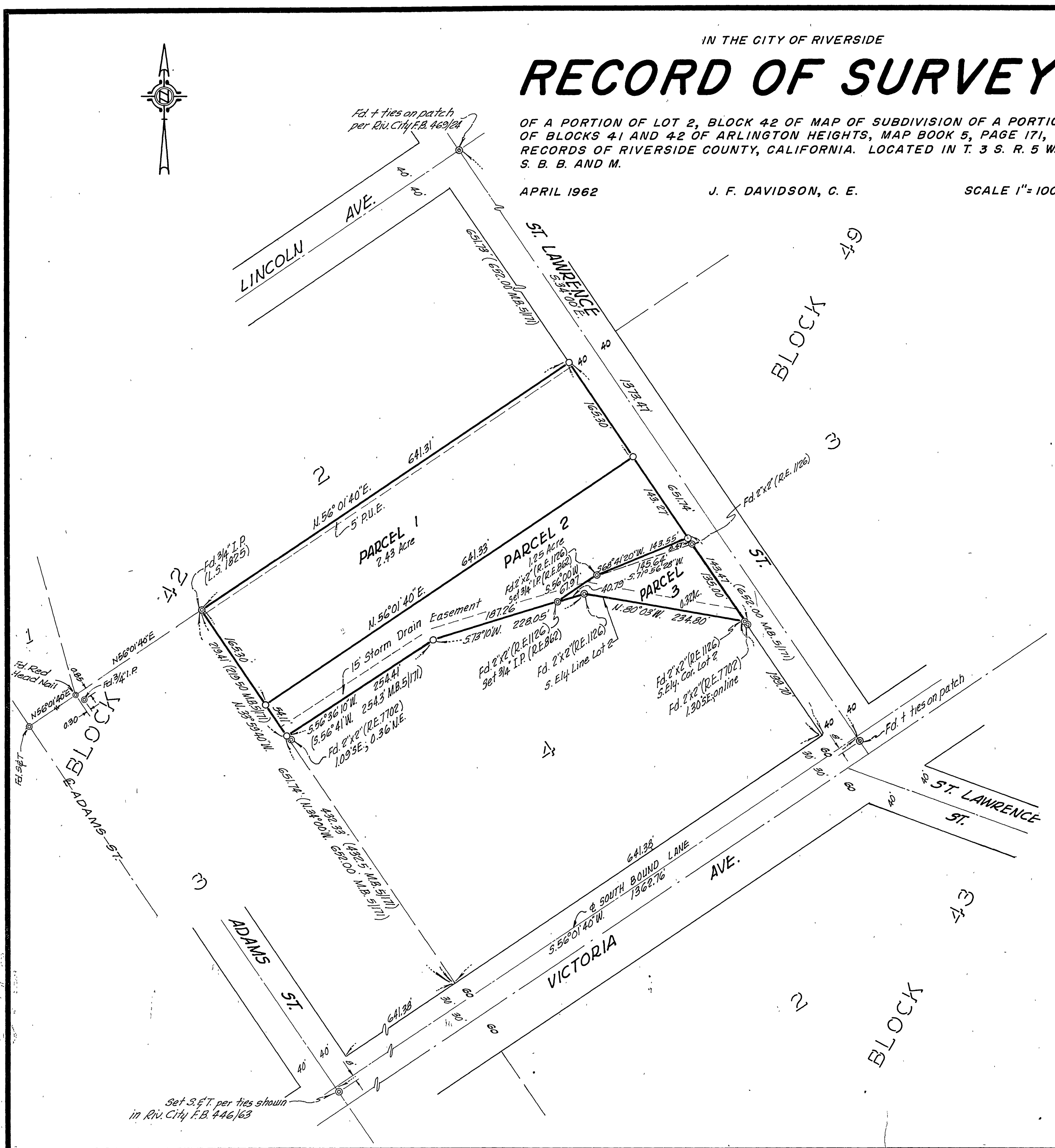
Filed for record at the request of County Surveyor this 26 day of Nov, 1962 at 3:30 P.M. in Book 38 of Record of Survey of Page 31

Fee \$ 5.00 No. 108708

JACK A. ROSS County Recorder

By Baron B. Vaughn Deputy

SURVEYED AT REQUEST OF F. L. MAGNUSON



ENGINEER'S CERTIFICATE

This map correctly represents a survey made by me or under my direction in conformance with the requirements of Chapter 15 of Division 3 of the Business and Professions Code at the request of F.L. MAGNUSON in April, 1962.

J. F. Davidson
Registered Civil Engineer No. 862

ENGINEER'S NOTE

Bearings are based on the Northeasterly line of Lot 2, Block 42 of Map of Subdivision of a portion of Blocks 41 and 42 of Arlington Heights, Map Book 5, Page 171, Records of Riverside County, Calif., bearing being S. 34° 00' E.

○ Indicates 3/4" Iron Pipe, tagged R.E. 862, set for corner.

COUNTY SURVEYOR'S CERTIFICATE

This map has been examined for conformance with the requirements of Chapter 15 of Division 3 of the Business and Professions Code this 16th day of November, 1962.

A.C. KEITH County Surveyor

By C. T. Worsley Deputy

Set S.E.T. per ties shown in Riv. City F.B. 446/63