

IN THE COUNTY OF RIVERSIDE

# RECORD OF SURVEY

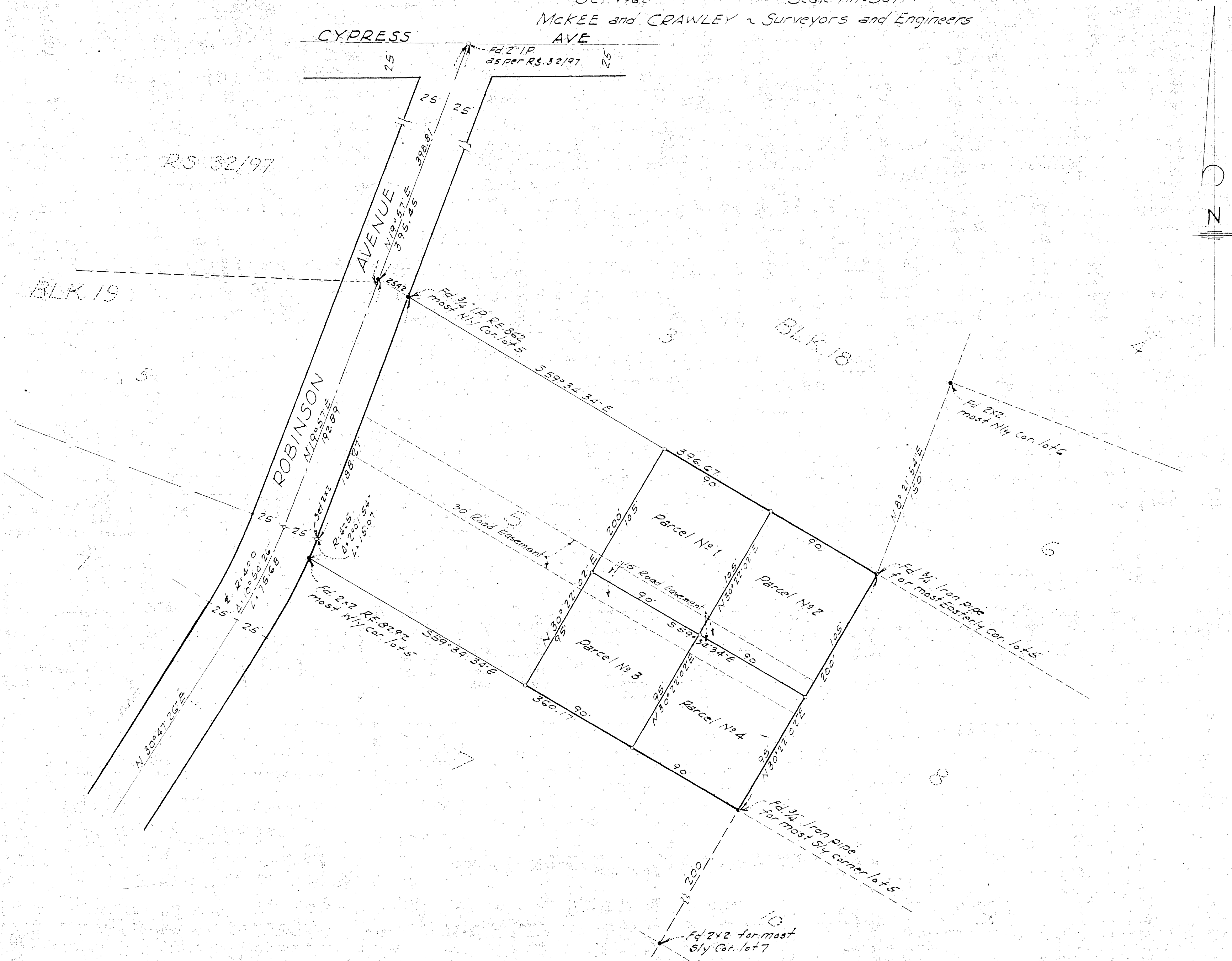
of a Portion of Lot 5 BLK 18 of LA GRANADA as shown by Map on file in Book 12 of Maps Pages 42 to 51 incl. Records of Riverside Co Calif in T. 3 S. R. 6 W. Rancho La Sierra Sepulveda

Oct. 1962 Scale 1 in = 50 ft  
McKee and CRAWLEY ~ Surveyors and Engineers

Filed for the record at the request of County Surveyor this 26 day of November 1962 at 3:20 P.M. in Book 38 of Record of Survey at Page 32

Fee \$5.00 No. 1  
JACK A. ROSS County Recorder

By Harmon B. Vaughn Deputy



### ENGINEER'S CERTIFICATE

This map correctly represents a survey made by me or under my direction in conformance with the requirements of Chapter 15 of Division 3 of the Business and Professions Code at the request of Bob Rutter in Oct. 1962

George O. Crawley  
Registered Civil Engineer No. 9455

### ENGINEER'S NOTE

Note. Bearings are based on the center line of ROBINSON ST shown as N 19°47' E on R.S. 32/97 Riv. Co. Calif.  
Monuments found as shown  
1/4 Iron pipe tagged RE 9455 set at all corners of Parcels 1 to 4 incl. unless otherwise noted

### COUNTY SURVEYOR'S CERTIFICATE

This map has been examined for conformance with the requirements of Chapter 15 of Division 3 of the Business and Professions Code this 16th day of November, 1962

A. C. KEITH County Surveyor

By G. T. Worsley Deputy

RC 381