

IN THE CITY OF RIVERSIDE

# RECORD OF SURVEY

OF A PORTION OF LOTS 26 AND 27, IN SECTION 19, T. 2 S. R. 4 W., S. B. B. AND M., OF EAST RIVERSIDE LAND CO., M. B. 6, PG. 44, RECORDS OF SAN BERNARDINO COUNTY, CALIFORNIA.

Filed for record at the request of County Surveyor this 16th day of NOVEMBER, 1962 at 3:30 P.M. in Book 38 of Record of Survey at Page 34

Fee \$5.00 No. 108711  
JACK A. ROSS County Recorder

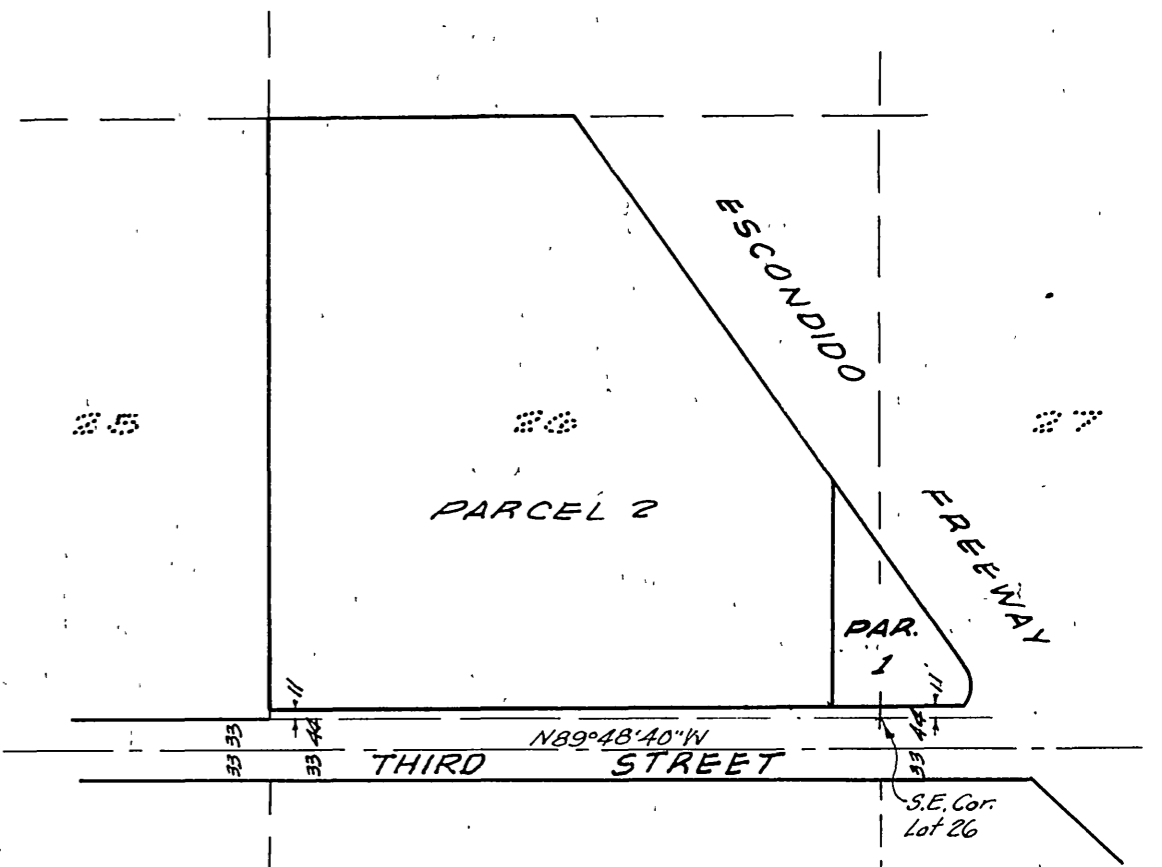
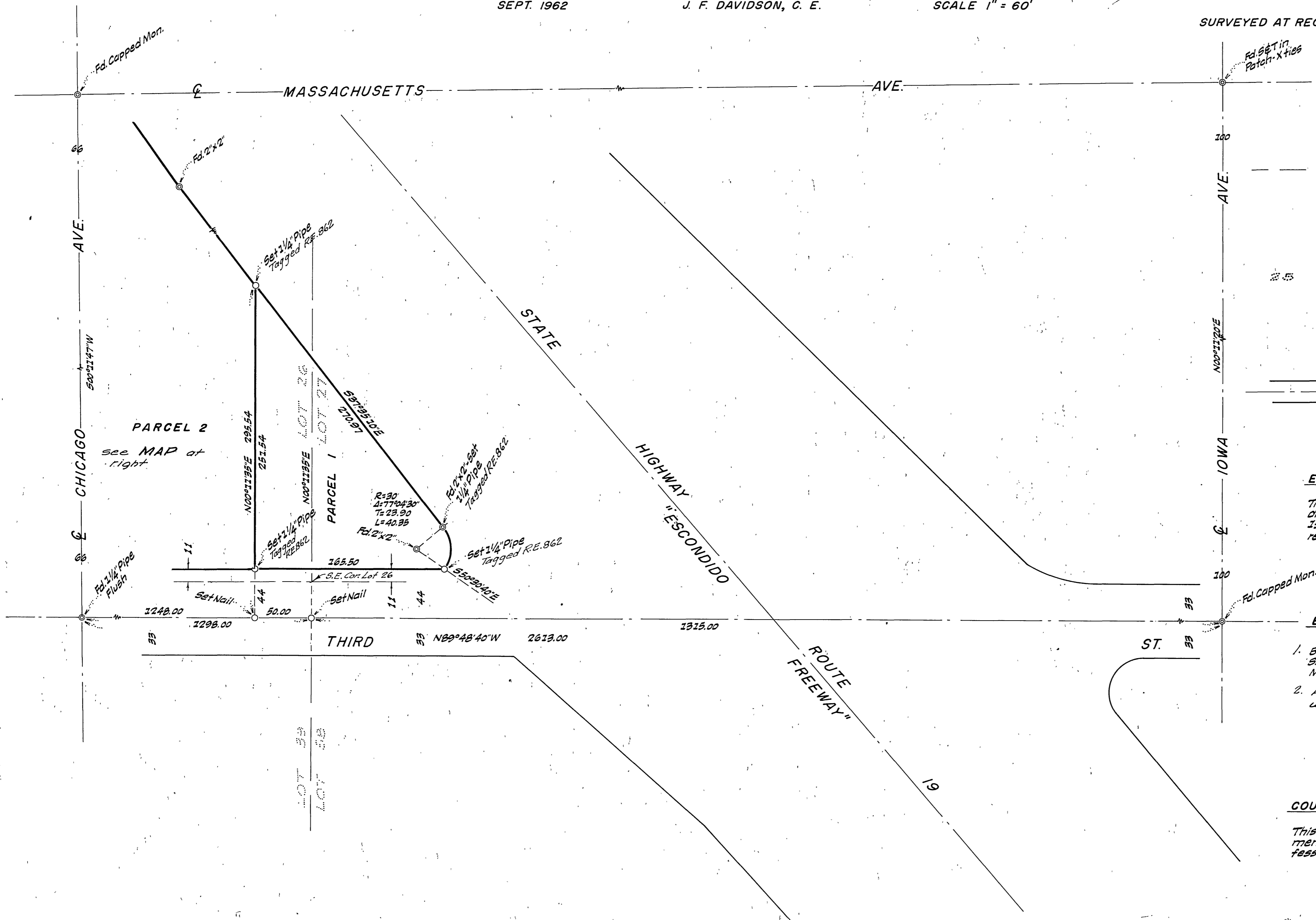
By Joseph B. Vaughan Deputy

SEPT. 1962

J. F. DAVIDSON, C. E.

SCALE 1" = 60'

SURVEYED AT REQUEST OF RICHARD HOLMES



### ENGINEER'S CERTIFICATE

This map correctly represents a survey made by me or under my direction in conformance with the requirements of Chapter 15 of Division 3 of the Business and Professions Code at the request of RICHARD HOLMES in September, 1962.

J. F. Davidson  
Registered Civil Engineer No. 862

### ENGINEER'S NOTE

1. Bearings are based on the center line of CHICAGO AVE., being S. 00°11'47" W. as shown on map of "BAGWELL TRACT UNIT No. 2" Map Book 28, Pg. 30, Records of Riverside County, California.
2. Parcel 2 as shown is based on record data and was not surveyed.

### COUNTY SURVEYOR'S CERTIFICATE

This map has been examined for conformance with the requirements of Chapter 15 of Division 3 of the Business and Professions Code this 16th day of November, 1962.

A. C. KEITH County Surveyor

By C. T. Wozley Deputy